

SP 22-12 Lot 8

Veiling onder die beskerming van die Santa Gertrudis genootskap



15^{de} Produksieveiling

DONDERDAG, 4 SEPTEMBER 2025

om 11h00 - Circle C Ranches, Excelsior



X-Clusive

SANTA GERTRUDIS

Aanbod:
 30 SP Bulle
 20 Stoet verse
 15 Kommersiële verse

Alle diere is getoets vir BM & TB.
 Bulle is getoets vir vrugbaarheid en alle geslagsiektes.
 Vroulike diere vir dragtigheid getoets.

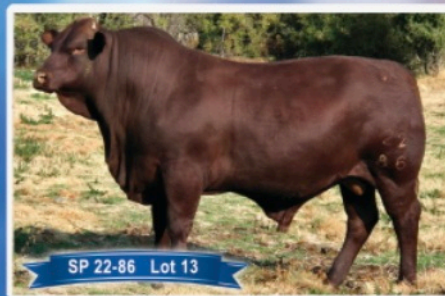


Navrae:
 Howard Hobson 082 410 2401
 Bärend Brits 082 776 0495 (Vleissentraal)
 Ian Grobbelaar 060 965 6207 (Afslaer)



OLG 21-08 Lot 3

Voorwaardes: Vleissentraal se standaard veilingsvoorwaardes geld. Kontant, Kaart- / Internetfasiliteite vir betalings op veiling beskikbaar. BTW is betaalbaar. FICA: Bewys van woonadres, BTW sertifikaat & ID (Verbruikersbeskermingswet - 68 van 2008). Afslaer & Verkoper behou die reg voor om items voor of tydens die veiling te onttrek of by te voeg.





X-Clusive

SANTA GERTRUDIS

WELKOM BY CIRCLE C RANCHES

Geniet die dag saam met ons



BLOEMFONTEIN

**SANTA GERTRUDIS BEESTELERS GENOOTSKAP VAN SUID
AFRIKA
VEILINGS ONDERHEWIG AAN DIE REËLS EN REGULASIES VAN
DIE GENOOTSKAP.**



(Soos aangepas 30 April 2024)

Die Santa Gertrudis Beestelersgenootskap van Suid Afrika verwag dat alle veilings van stoetdiere deur sy lede, onder die beskerming van die Genootskap moet plaasvind.

**DIE TERM “ONDER DIE BESKERMING VAN DIE SANTA GERTRUDIS
GENOOTSKAP VAN SUID AFRIKA” BETEKEN DAT:**

1. Die Santa Gertrudis Genootskap die egtheid van die teel- en prestasiegegewens van elke dier, soos in die katalogus verskyn, gekontroleer het en dat ‘n keurder die diere visueel geïnspekteur het.
2. Die Santa Gertrudis Genootskap ‘n lys van keurders aanwys waaruit die verkoper of indien ‘n groep verkopers (die koördineerder) kan kies, wie die dag voor die veiling, die veilingsdiere vir veilingswaardigheid gaan geïnspekteer.
3. Dat alle diere wat aangebied word, voldoen aan die minimum rasstandaarde van die Genootskap.
4. Alle diere wat aangebied word en oor die ouderdom van 12 maande is, goedgekeur is vir aantekening/registrasie by Santa Gertrudis SA.
5. Dat alle rekords nl. Dragtigheidsertifikate, geboortekennisgewings, vrugbaarheidsertifikate en registrasie sertifikate in plek is.
6. Alle diere wat reeds by die Santa Gertrudis Genootskap aangeteken/geregistreer is, maar nie aan die vereistes voldoen soos neergelê in die konstitusie en aanhangsels, mag nie op die veiling onder die beskerming aangebied word nie.

7. Alle kommunikasie met betrekking tot die veiling sal slegs tussen die Genootskap en die aangewese organiseerder(s) plaasvind. Die organiseerder(s) sal vir die kommunikasie tussen die verskillende verkopers betrokke by die veiling verantwoordelik wees.
8. Vanaf 1 Januarie 2025 mag veilings onder die beskerming slegs plaasvind met vier (4) dae tydperk tussen twee veilings. Gevestigde veilings en veilings van vorige jare sal voorkeur geniet by die bespreking van datums.

DIE DIERE WAT ONDER DIE BESKERMING VAN DIE GENOOTSKAP AANGEBIED WORD MOET AAN DIE VOLGENDE VEREISTES SOOS NEERGELÊ IN DIE GRONDWET EN AANHANGSELS, VOLDOEN:

1. AANSOEK OM VEILINGS ONDER DIE BESKERMING AAN TE BIED:

- 1.1. Alle Telers, gasverkopers en/of klubs moet 2 (twee) maande voor die veilingsdatum skriftelik aansoek doen om 'n veiling onder die beskerming van die Genootskap aan te bied.
- 1.2. Die **Identifikasie-** en **registrasienuommers** van al die verkoopsdiere moet skriftelik aan die Genootskap gestuur word 2 maande voor die veilingsdatum. (Maak voorsiening vir vervangingsdiere).
- 1.3. ALLE veilings waarop geregistreerde Santa Gertrudis diere deur lede van die Genootskap aangebied word, moet 'n offisiële Santa Gertrudis formaat hê. Laat twee weke toe vir die verwerking van die katalogus.
- 1.4. 'n Konsep katalogus sal aan u gestuur word vir verifikasie van korrektheid. Slegs 'n finale katalogus sonder die rooi "Draft" opskrif mag gebruik word.
- 1.5. Alle kalwers ouer as 6 maande moet met die kuddekenmerkletter(s) gebrand en getatoeër wees.
- 1.6. Geen verandering kan aan die katalogus gemaak word na die finale katalogus uitgestuur is nie. Indien daar veranderinge aangebring word na die finale katalogus, sal dit as addendums tot die katalogus wees en sal die kostes soos deur die diensverskaffer (SA Stamboek) bepaal word, deur die verkoper verskuldig wees.
- 1.7. Alle produksie, reproduksie en drie generasie stamboom (ID van die dier, naam van die dier, eienaar, geboortedatum, registrasie nommer, ouderdom eerste kalf, DLK, TKP, kalwings, ouderdom, inspeksie datum, EBV's, SA gemiddelde van EBV's, Internasionale EBV's gemiddelde, akkuraatheid van EBV's) moet op selfopgestelde

katalogusse verskyn. Alle self opgestelde katalogusse moet deur die Santa Gertrudis Genootskap goedgekeur word.

- 1.8. Slegs Afdeling SP- en B-bulle mag verkoop word, waarvan die vaderskap bewys moet wees. Afdeling SP bulle word voor Afdeling B bulle verkoop, met 'n duidelike afkondiging deur die afslaer vir die verkoop van die Afdeling B bulle.

2. VEREISTES WAARAAN DIERE MOET VOLDOEN:

2.1. GESONDHEID:

2.1.1. Bul ouderdom en vrugbaarheid:

- 2.1.1.1. Die minimum ouderdom waarop bulle op produksieveilings aangebied mag word is 24 maande.
- 2.1.1.2. Geen ouderdoms beperking word geplaas op bulle wat op algehele uitverkopings aangebied word nie, maar bulle 18 maande en ouer moet oor gesondheid sowel as vrugbaarheidsertifikate beskik en moet gekeur wees.
- 2.1.1.3. **Skedewasse:** Alle gebruikte bulle, maagdelike bulle (jonger as 36 maande) sowel as bulle ouer as 36 maande, moet voor die veilingsdatum oor 'n negatiewe Realtime PCR skedewas beskik. *Slegs 1 Realtime PCR toets 30 dae voor veiling sal aanvaarbaar wees.*
- 2.1.1.4. Die Genootskap hou die reg voor om skrotum omvang te hermeet na goeddenke van die aangestelde inspekteur.

2.2. VRUGBAARHEID

- 2.2.1. Eerste kalf vroulike diere moet voor of op die ouderdom van 40 maande kalf. Vroulike diere mag nie 'n TKP (Tussen Kalf Periode) van 730 dae en DLK (Dae Laaste Kalwing) van 730 dae op die dag van die veiling oorskry nie. Diere wat die norms oorskry, sal nie op die veiling toegelaat word.
- 2.2.2. **Dragtigheidstoetse:** Die dragtigheid status van alle vroulike diere op die veiling moet verklaar word. Waar 'n koei of 'n vers as dragtig aangebied word, moet 'n veeartseny sertifikaat voorsien word aan die Santa Gertrudis kantoor 7 dae voor die veilingsdatum.
- 2.2.3. Alle dragtigheidsertifikate moet deur 'n geregistreerde veearts onderteken word.

- 2.2.4. **Die minimum skrotumomvang van bulle moet soos volg wees volgens:**
24 Maande = 36cm
- 2.2.5. **Vrugbaarheids toetse:** Vrugbaarheids sertifikate is slegs geldig as die toets 30 dae of minder voor die veilingsdatum gedoen is. Die vrugbaarheids sertifikate moet voldoen aan die Genootskap se vereistes en in ooreenstemming met die Suid-Afrikaanse Veterinêre Raad se voorskrifte.
- 2.2.6. **Morfologie toetse:** Morfologie toetse is verpligtend. Die maksimum defekte wat toegelaat word, “minor & major” gekombineerd is 25%. Dit beteken dat ‘n minimum van 75% morfologie aanvaar sal word.
- 2.2.7. **Vrugbaarheidsertifikate:** 7 Dae voor die veilingsdatum moet alle voltooide vrugbaarheidsertifikate aan die Santa Gertrudis kantoor gestuur word. Uitsondering sal gemaak word:
- 2.2.7.1. vir bulle, indien nie meer as 10% van die bulle die vrugbaarheidstoets geslaag het nie,
- 2.2.7.2. om her-toets te word en hierdie sertifikate moet aan die Rasbestuurder gegee word die dag voor die veiling.
- 2.2.8. Alle vrugbaarheidsertifikate moet deur ‘n geregistreerde veearts of geregistreerde kollekteerder onderteken wees. Dit moet in ooreenstemming met die vereistes van die Veeverbeteringswet wees en aan die volgende minimum standarde voldoen:
- 2.2.9.
- 2.2.9.1. Nommer van die dier (brand en of tatoeër)
- 2.2.9.2. Skrotum omtrek
- 2.2.9.3. Konsistensie / digtheid van semen
- 2.2.9.4. Massa beweging (minimum van 2 uit 5 is aanvaarbaar)
- 2.2.9.5. Bakteriologiese ondersoeke
- 2.2.9.6. % Normale sperme (minimum van 75% is aanvaarbaar)
- 2.2.9.7. Getoets teen BM en TB
- 2.2.9.8. Datum van ondersoek en of toets
- 2.2.9.9. Veearts se handtekening
- 2.2.10. Die hoeveelheid semen strooitjies wat teruggehou word deur die verkoper, moet duidelik aan die koper gekommunikeer word deur dit op die katalogus te wysig.

3. VEILINGSKEURING (SCREENING)

3.1. Die doel van “screening” is:

3.1.1. Om die identifikasie van die dier te verifieër.

3.1.2. Om die dier te inspekteur vir funksionele foute en om seker te maak die dier voldoen aan die minimum rasstandaard.

3.1.3. Om te verifieer dat die dier aan die minimum produksie en reproduksie standarde voorgelê vir veilings onder die beskerming van die genootskap, voldoen.

3.2. Geen persoon wat diere op ‘n veiling onder die beskerming aanbied, mag diere op daardie veiling of sy eie diere “screen” nie.

3.3. Geen persoon (veilingshuis personeel, afslaers, bemarkers) persoonlik betrokke by die veiling, mag nie diere onder die beskerming “screen” nie.

3.4. Die inspekteur sal die teler/s in kennis stel indien enige diere afgekeur is.

3.5. Alle diere, manlik sowel as vroulik, sal onderhewig wees aan keuring. Diere wat nie die “screening” slaag nie, sal onttrek word vanaf die veiling en moet verwyder word.

Vroulike diere wat nie keuring slaag nie as gevolg van prulfoute kan:

3.5.1. aangebied word as kommersiële diere na die onder beskerming veiling, **nie onder die beskerming van die Genootskap nie, en sal dan van die stelsel gekanselleer word en kan nooit weer heringestel word nie.**

3.5.2. Of kan terug geneem word na die plaas van herkoms en verloor status indien sy afgekeur is, as gevolg van ‘n prul fout.

3.5.3. Diere wat nie keuring slaag nie as gevolg van welke ander rede, moet van die veiling onttrek word en teruggeneem word na die plaas van herkoms.

3.5.4. Kommersiële vroulike diere kan na afloop van die veiling onder die beskerming geskied, maar daar moet ‘n breek tussen die twee veilings wees en daar moet afgekondig word, dat die diere nie onder die beskerming van die Genootskap verkoop word nie.

Bulle wat nie veilings keuring slaag nie as gevolg van prulfoute:

3.5.5 kan nie as kommersiële diere by die veiling verkoop word nie en moet van die veiling onttrek word

3.5.6 sal gekanselleer word op die stelsel en kan nie weer heringestel word nie

3.6. Diere wat aangebied word op ‘n veiling onder die beskerming van die Genootskap moet teen 14:00 die dag voor die veiling gereed wees vir “screening”.

- 3.7. Geen manlike diere met 'n veelsydige vaar mag op veilings onder die beskerming van die Genootskap aangebied word nie.
- 3.8. **Keurings / inspeksies van diere** – Alleenverkopers sowel as gesamentlike verkopers moet op eie koste self reël vir die “screening” van al die veilingsdiere.
- 3.9. Die keurder wat die “screening” behartig, moet die kantoor skriftelik in kennis stel indien daar diere is wat gekanselleer moet word, asook vir watter redes.

4. GESONDHEID:

4.1. BM & TB TOETSE:

- 4.1.1. Die KUDDE moet BM negatief getoets wees binne die afgelope 12 maande voor veilingsdatum en ‘n CA3 sertifikaat moet ingedien word (geldig vir een jaar) of die diere wat aangebied word vir die veiling moet getoets wees en die nommers moet aangeteken wees. Indien langer as 12 maande voor die veilingsdatum, sal alle diere wat op veiling aangebied word, weer getoets moet word.
- 4.1.2. Die KUDDE moet TB negatief getoets wees binne die afgelope 24 maande voor veilingsdatum en ‘n CA3 sertifikaat moet ingedien word (geldig vir 24 maande) of die diere wat aangebied word vir die veiling moet getoets wees en die nommers moet aangeteken wees.. Indien langer as 24 maande voor die veilingsdatum, sal alle diere wat op veiling aangebied word, weer getoets moet word.
- 4.1.3. Hierdie reël is ook van toepassing vir Gasverkopers.
- 4.1.4. Individuele diere vir ‘n veiling moet vir TB en BM getoets wees tensy hulle op die kuddesertifikaat verskyn.

5. ALGEMEEN:

- 5.1. **Vrywaringsvorm:** Alle verkopers moet die vrywaringsvorm teken en terugstuur aan die Genootskap se kantoor. Katalogus sal teruggehou word totdat vorms ontvang is.
- 5.2. **Santa Gertrudis logo:** Die Raad beveel aan dat die amptelike Santa Gertrudis logo vir advertensie gebruik word in die veilingskatalogusse en tydskrifte.
- 5.3. Die Genootskap ontvang as vergoeding vir hierdie diens ‘n vaste bedrag soos van tyd tot tyd vasgestel deur die Raad (Sluit webgebaseerde katalogus in).

- 5.4. Indien dit 'n veiling is met minimum diere, sal die inskrywingsfooi R400 per dier beloop, om die katalogus kostes te dek. Die koste sal nog steeds R400 per dier wees, al word daar geen diere op hierdie tipe veilings verkoop nie.
- 5.5. Totale uitverkopings sal 2% kommissie op die omset bereken word en aan die Genootskap betaal word.
- 5.6. **Voorwaardes vir veiling:** Die teler moet die voorwaardes wat deur die Genootskap uiteengesit is aanvaar en ten volle daarmee saam stem.
- 5.7. Die beginsel word aanvaar dat alle diere sal voldoen aan die rasstandaarde ooreenkomstig met die Konstitusie en indien dit nie daaraan voldoen nie, kan versoek word dat die dier onttrek moet word.
- 5.8. Alle diere wat aangebied word op 'n veiling onder die beskerming moet gekeur wees. Keuring moet reeds afgehandel wees voor die aanvang van die opstel van die katalogus. Kalwers jonger as 9 maande wat saam met die ma verkoop word, is nie onderhewig aan keuring nie.

6. ALGEMENE VOORKOMS VAN DIERE OP DIE VEILING:

- 6.1. Diere moet ooglopend gesond en lewenskragtig wees.
- 6.2. Omlope, vratte en wonde sal nie toegelaat word nie.
- 6.3. Diere moet voldoen aan die rasstandaard en geen defekte sal toegelaat word nie.
- 6.4. Diere moet in 'n goeie kondisie wees en behoorlik uitgegroeï wees. Indien diere skraal en verhonger is, kan hulle nie aangebied word nie.

7. TEN SLOTTE

Hierdie veilingsreëls het ten doel om die ordelike oordrag van diere wat verkoop is op veilings te reguleer. Die verkoop van diere bly 'n transaksie tussen die koper en verkoper, waarvoor die verkoper moet verantwoordelikheid aanvaar! Die Genootskap behou die reg voor om enige kostes wat deur die nalatigheid en nie nakoming van die reëls van die verkoper te verhaal! Geen katalogus sal aan enige teler voorsien word wat nie voldoen aan hierdie veilingsreëls nie.

Wanneer u u veiling adverteer, maak seker dat u kommentaar en inligting (m.b.t. prestasies en dragtigheid) korrek is, sodat mede-telers nie daardeur te na gekom word en kopers nie onder 'n wanindruk gebring word nie.

Sukses met u veiling. Mag ons deur die aanbod van die veilings ook die Santa ras bevorder en uitbrei.

ANIMAL, OWNER AND PEDIGREE INFORMATION

2
3
4
5

LOT 1 (M)

BULL **V-PLAN** 14

Breed Logo

SB 200201 PP(c)

SUPERBULL'S SUPERSTAR SB 200201

SB 110001
SUPERBULL SB 11 0100

6

Herd Book	SP
Birth date	2020-01-01
Age	2y 7m
Inbreeding	1%
DNA	ABC001234

9 (& 10)

Parentage		
Sire	Dam	
DNA	✓	11
Genomic	✓	

SB 140007
SUPERBULL SB 140007 Pp(c)

SB 140010
SUPERBULL SB 140010

Age 7 | AFC 27 | ICP 366
Calves 6 | Weaned 2
Avg. WI 89 | Wean Mat. 93
Calvings: 16-11, 17-10, 18-10, 20-03, 21-03, 22-04, 23-04

12

SUPERBULL BREEDERS

8

Town, Province

078 737 2855

super_bull@webmail.com

13

1. Lot Number, category & sex (mixed lots)
2. Breed's logo
3. **GT** - animal is genomically tested
4. Animal Identification Number and Name
5. Polled Status
 - Celtic: PP(c)/Pp(c) - polled, HH(c) - horned
 - Phenotypic: P/PcH - polled, HH - horned, SC - scurs
6. Animal's photo, or Herd's logo
7. Herd's logo
8. Owner's information

9. Animal's information
 - Herd book section
 - Birth date
 - Animal's age
 - Animal's inbreeding percentage
 - DNA Number - if available
10. Additional information (only females)
 - Age at first calving
 - Number of calves born
 - Number of calves weaned
 - Average Wean Index
 - Intercalving Period

11. Parentage Verification - a green tick (✓) indicates that the sire and/or dam has been verified via microsatellite (DNA) and/or Genomic testing
12. Dam information
 - Age and Number of Calvings
 - Average Wean Index and Number of Calves Weaned
 - Age at First Calving and Intercalving Period
 - Cow award
13. Four (4) generation pedigree
14. VPLAN Membership

QR Code

This code can be scanned with a smart device. It redirects to the animal's information on www.SABeeFBulls.com where additional information for the animal is available.



Myostatin	
Q204X	Free
NT821	Carrier
F94L	Not Tested

Myostatin Results

- Free - free from double muscling genes
- Carrier - heterozygotic / carrier of one double muscling gene
- D. Muscled - homozygotic / double muscled

GENETIC VALUES - BUILDING BLOCKS

Calf and Mother				Fertility				Post-Wean Growth			Frame			Carcass		
Birth Dir.	Birth Mat.	Wean Dir.	Wean Mat.	Scr. Circ.	Heifer Fert.	Cow Fert.	Longev.	Post Wean	ADG	FCR	Mature Weight	Height	Length	EMA	Fat	Mar
83	121	130	89	112	84	101	112	125	126	129	113	104	115	149	82	119
87%	70%	83%	70%	81%	68%	59%	69%	72%	76%	80%	65%	81%	80%	77%	74%	73%
10	11	12	13	16	14	15	17	18	19	20	21	22	23	25	26	27

The Logix Selection Values are compiled of specific genetic building blocks, as indicated in the selection value descriptions on the next page. These genetic building blocks are indicated in the catalogue by their Breeding Value indices and accuracies.

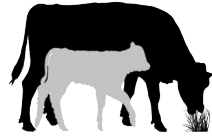
PHENOTYPIC VALUES

Birth Weight	205D Weight	365D Weight	540D Weight	ADG Index	FCR Index	Scrotum	LH
47kg	239kg 109 (19)	284kg 99 (10)	390kg 92 (10)	1680g/d 90 (13)	6.08 98	353mm (D1)	1.20
10	12			19	20	16	24

- 205D, 365D, 540D weights - adjusted weaning, year and 18 month weights, the phenotypic index obtained, and the number of animals in the contemporary group
- ADG and FCR Indices - phenotypic index obtained within the animal's contemporary group
- Scrotum - adjusted scrotal circumference, in mm, as measured at the end of the growth test, as well as the growth test type
- Length-Height Ratio (LH) - the animal's length to height ratio, as measured at the end of the growth test

LOGIX SELECTION VALUES

COW VALUE 108	
103	Calving Ease Value
118	Calf Growth Value
86	Milk Value
80	Maintenance Value
110	Fertility Value
GROWTH VALUE 105	
CARCASS VALUE 110	
PRODUCTION VALUE 103	



Logix Cow Value

Selection of:

- Fertile cows,
- with low maintenance,
- that calf easily,
- and wean heavy calves relative to own weight

Calving Ease Value
Low birth weight calves

Calf Growth Value
Heavy weaner calves

Milk Value
Good mothering ability

Maintenance Value
Low cow weight

Fertility Value
Fertile cows (calve early and regularly while family is retained in stud herds)

Measurement: Birth weight
EBVs: Birth Weight Direct and Maternal

Measurement: Weaning weight
EBVs: Weaning weight Direct

Measurement: Weaning weight
EBVs: Weaning weight Maternal

Measurement: Mature cow weight, Weaning weight
EBVs: Mature weight + 10% Wean Maternal

Measurement: Age at first calving, ICP and retention
EBVs: Heifer fertility, Cow fertility, and Longevity



Logix Growth Value

Selection for efficient growers on veld and in feedlot

Measurements: Phase C and D Growth test traits
EBVs: Weaning weight, End weight, ADG and Intake



Logix Carcass Value

Selection for higher meat yields on a carcass

Measurements: Phase C and D Growth test traits, RTU scanning traits
EBVs: End weight, Eye Muscle Area and Fat



Logix Production Value

Selection for profitable animals

80% of the Cow Value, and 20% of the Growth Value

HOW TO USE SELECTION VALUES

Logix Breeding Value Indices and Selection Values are versatile and can be used effectively to select various types of animals suitable for different environments and markets. Three examples of selection goals are shown. Always check all selection values for compatibility with your specific selection goal and never select only on the Cow Value.

AVERAGE ANIMALS

(NO GROWTH EXTREMES)

COW VALUE 112	
99	Calving Ease Value
109	Calf Growth Value
108	Milk Value
95	Maintenance Value
104	Fertility Value
GROWTH VALUE 108	
CARCASS VALUE 109	
PRODUCTION VALUE 109	

- Selection Values 90 to 110
- Cow Value & Fertility Value average to high

A safe choice, as animals are profitable in most environments.

GROWERS

(GOOD ENVIRONMENT)

COW VALUE 112	
99	Calving Ease Value
109	Calf Growth Value
108	Milk Value
95	Maintenance Value
104	Fertility Value
GROWTH VALUE 108	
CARCASS VALUE 109	
PRODUCTION VALUE 109	

- Calf Growth / Growth Value > 110
- Cow Value & Fertility Value average to high

Growers are heavier at birth (lower Calving Ease Value), and heavier at maturity (lower Maintenance Value).

LOW-MAINTENANCE ANIMALS

(HARSH ENVIRONMENT)

COW VALUE 112	
99	Calving Ease Value
109	Calf Growth Value
108	Milk Value
95	Maintenance Value
104	Fertility Value
GROWTH VALUE 108	
CARCASS VALUE 109	
PRODUCTION VALUE 109	

- Maintenance Value > 110
- Cow Value & Fertility Value average to high

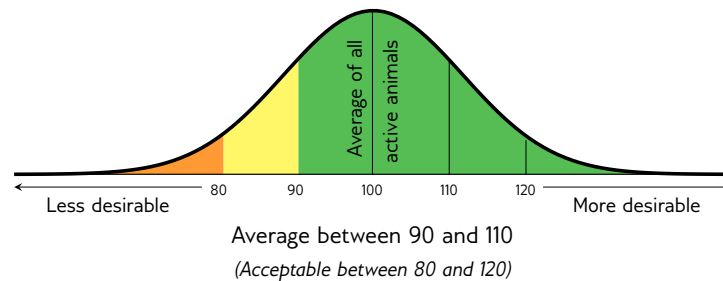
Lighter cows have a lower maintenance (higher Maintenance Value).

EXPLANATION OF BREEDING VALUES AND SELECTION VALUES

Traits	Description/Measurement	Goal	General Guidelines					
			<-80	<-90	90-110	>110	>120	
Selection Values	1 Cow Value	Combination of Calving Ease, Calf Growth, Milk, Maintenance and Fertility Values (Rand-Value)	Profitable Cow	Loss				Profit
	2 Calving Ease Value	Risk for calving problems (calf too heavy) vs calf too small	Avg. birth weight	High				Low
	3 Calf Growth Value	Calf's genetic ability for pre-weaning growth	Heavy weaner calf	Light				Heavy
	4 Milk Value	Cow's genetic mothering and milking ability	Enough milk for the calf	Less				More
	5 Maintenance Value	Maintenance requirements of cow (cow weight and milk)	Low cow maintenance	High			*	Low
	6 Fertility Value	Fertility and retention of cows and heifers	Fertile cows	Low				High
	7 Growth Value	Efficient growth on veld and in feedlot (R-value)	Profitable growth	Loss				Profit
	8 Carcass Value	Meat on carcass (Weight and RTU EBVs)	More meat on the carcass	Less				More
	9 Production Value	Combination of Cow- and Growth values (R-value)	Profitable animals	Loss				Profit
Cow & Heifer	10 Birth Weight Direct	Birth weight (Calf's genetic ability)	Avg. birth weight	Heavy				Light
	11 Birth Weight Maternal	Birth weight (Cow's genetic ability)	Easy calving	Heavy				Light
	12 Weaning Weight Direct	Weaning weight (Calf's genetic ability)	Heavy weaner calves	Light				Heavy
	13 Weaning Weight Maternal	Weaning weight (Cow's genetic ability)	Good mothers	Poor				Good
	21 Mature Cow Weight	Cow weight at weaning of first three calves	Avg. mature cow weight	Light		*	*	Heavy
Fertility	Cow-Calf Birth	EBV Birth Direct / EBV Mature Cow weight	Average	Low				High
	Cow-Calf Wean	EBV Wean Direct / EBV Mature Cow weight	High calf-cow ratio	Low				High
	14 Heifer Fertility	Age at first calving	Fertile heifers	Less				More
	15 Cow Fertility	First 3 inter-calving periods (ICPs)	Fertile cows	Less				More
Growth & Frame	16 Scrotal Circumference	As measured during the growth test	Fertile bulls	Less				More
	17 Longevity	Retention of progeny	Acceptable progeny	Poor				Good
	18 Post-Wean Weight	12- and 18 month weights	Good post-wean growth	Low			*	High
	19 Average Daily Gain	Average daily gain	Good growth	Poor				Good
	20 Feed Conversion Ratio	100g feed intake / g weight gain	Feed efficiency	Poor				Good
	22 Height	Shoulder / Hip height in growth test	Heavy carcass	Light			*	Heavy
	23 Length	Length in growth test	Average height	Short				Tall
	24 Length-Height Ratio	EBV Length / EBV Height	Longer rather than tall	Short				Long
Carcass	25 Eye Muscle Area	RTU measured eye muscle area	Bigger steaks	Small				Big
	26 Fat Thickness	RTU measured P8 backfat thickness	Carcass quality	Thin				Thick
	27 Marbling	RTU measured % of intra-muscular fat	Juicy meat	Low				High

* Determined by own selection goal

INTERPRETATION OF BREEDING VALUE INDICES



LOT 1 (M)



SP 220002
SANTAPINE SP220002

BULL



PINEKLOOF TRUST

Ladybrand, Free State
0824102401
pinnacle.santas@gmail.com

P.O. BOX 287, LADYBRAND, 9745



Myostatin	
Q204X	Free
NT821	Free
F94L	Free

Herd Book	SP
Birth date	2022-03-07
Age	3y 6m
Inbreeding	0%
DNA	ZOCA2025-87234

3156 RED DOC DINERO 4088 Wean Mat. 115	527 KR 189/11 Wean Mat. 115
Parentage Sire Dam	810 RDF BONITA 8017 Age 17y AFC - ICP - Calves - Weaned - Wean Mat. 117 Avg. WI - Wean Mat. 117
DNA ✓	HH 160018 HH PINNACLE NIKE Wean Mat. 86
Genomic	FS 130512 P FERNANDO 13 512 Age 9y AFC 35m ICP 360d Calves 6 Weaned 5 Wean Mat. 137 Avg. WI 108 Wean Mat. 137
HH 190030 PINNACLE QUIZZY Age 5y AFC 29m ICP 511d Calves 3 Weaned 1 Wean Mat. 117 Avg. WI 116 CCB - CCW 27.5 Calvings: 22-03, 23-06, 24-12	876 K 282/08 806 KR 363/5 5A Age 20y Avg. WI - Calves - Weaned - 412 SCC NEW VISION 4V42 863 RDF 6-316 Age 19y Avg. WI - Calves - Weaned - HH 130015 PINNACLE KNIGHT HH 110020 PINNACLE INGA Age 10y Avg. WI 94 Calves 7 Weaned 5 DJW 050061 CONSORT 05 61 FS 050022 FERNANDO FO 5-22 Age 12y Avg. WI 90 Calves 6 Weaned 1

COW VALUE	135
80	Calving Ease Value
136	Calf Growth Value
116	Milk Value
71	Maintenance Value
110	Fertility Value
GROWTH VALUE	130
CARCASS VALUE	139
PRODUCTION VALUE	136



Calf and Mother				Fertility			
Birth Dir.	Birth Mat.	Wean Dir.	Wean Mat.	Scr. Circ.	Heifer Fert.	Cow Fert.	Longev.
78	91	136	116	135	109	115	95
46%	34%	67%	45%	22%	38%	19%	46%

Post-Wean Growth			Frame			Carcass		
Post Wean	ADG	FCR	Mature Weight	Height	Length	EMA	Fat	Mar
133	132	118	135	137	136	132	122	122
20%	18%	19%	16%	21%	19%	17%	15%	15%

Birth Weight	205D Weight	365D Weight	540D Weight	ADG Index	FCR Index	Scrotum	LH
-	295kg 116 (6)	-	-	-	-	-	-

SELLER REMARKS: Hard compact Dinero son. Scrotal of 43cm.

LOT 2 (M)



FR 220084
SANBACH TRIPP

BULL



SANBACH TRUST

Excelsior, Free State
0827752408
jorinarautenbach@gmail.com

PLAAS LINANA 1303, EXCELSIOR, 9760



Myostatin	
Q204X	Free
NT821	Carrier
F94L	Free

Herd Book	SP
Birth date	2022-09-29
Age	2y 11m
Inbreeding	1%
DNA	ZOCA2025-86310

VV 140091 HH VALLEY-VENTURE VV140091 Wean Mat. 101	JO 090174 HH BIG J J OJ 09 174 Wean Mat. 121
Parentage Sire Dam	VV 120014 VALLEY-VENTURE VV120014 Age 13y AFC 29m ICP 406d Calves 10 Weaned 10 Wean Mat. 90 Avg. WI 99 Wean Mat. 90
DNA ✓	SP 110076 SANTAPINE CABANA Wean Mat. 76
Genomic	AJ 080039 SANTADALE AJ08-039 Age 14y AFC 36m ICP 440d Calves 10 Weaned 6 Wean Mat. 73 Avg. WI 96 Wean Mat. 73
FR 170067 SANBACH KACI Age 6y AFC 29m ICP 486d Calves 3 Weaned 3 Wean Mat. 79 Avg. WI 97 CCB - CCW - Calvings: 20-02, 21-08, 22-09	JO 040366 BIG J PIP 04 366 JO 050051 BIG J O5 51 Age 10y Avg. WI 80 Calves 7 Weaned 3 KT 080031 KOCHBO KT 08 0031 VV 090056 VALLEY-VENTURE VV090056 Age 3y Avg. WI 105 Calves 1 Weaned 1 KT 080007 KOCHBO PAPPARAZZI SP 060099 SANTAPINE X-TENT Age 9y Avg. WI 107 Calves 5 Weaned 5 AJ 040055 SANTADALE 04 55 AJ 050082 SANTADALE 05 82 Age 4y Avg. WI - Calves 1 Weaned -

COW VALUE	90
106	Calving Ease Value
100	Calf Growth Value
90	Milk Value
100	Maintenance Value
84	Fertility Value
GROWTH VALUE	95
CARCASS VALUE	92
PRODUCTION VALUE	88



Calf and Mother				Fertility			
Birth Dir.	Birth Mat.	Wean Dir.	Wean Mat.	Scr. Circ.	Heifer Fert.	Cow Fert.	Longev.
104	106	100	90	87	85	80	106
53%	40%	70%	55%	25%	47%	29%	53%

Post-Wean Growth			Frame			Carcass		
Post Wean	ADG	FCR	Mature Weight	Height	Length	EMA	Fat	Mar
99	99	103	99	87	94	93	77	90
22%	23%	19%	15%	26%	25%	22%	20%	20%

Birth Weight	205D Weight	365D Weight	540D Weight	ADG Index	FCR Index	Scrotum	LH
-	222kg 91 (24)	-	-	-	-	-	-

SELLER REMARKS: Bul met goeie vleiseienskappe. Breë, manlike bul. Skrotum van 38,4cm.

LOT 3 (M)



OLG 210008
OPLAAS GELUK KNERSUS

BUL



H. DU TOIT

Heidelberg, Gauteng
admin@sisutradng.co.za

T/A OPLAAS GELUK BOERDERY,
POSTNET SUITE #516, PIVATE
BAG H607, HEIDELBERG, 1441

Kuddeboek	SP
Geb. dtm	2021-03-12
Oud.	4j 6m
Inteling	1%
DNS	ZOCA2024-73509

FR 150090 HH
SANBACH GAFFEL
Spn Mat. 123

Ouerskap	Vaar	Moer
DNS	✓	
Genomies		

OLG 160009
OPLAAS GELUK KOKET
Oud. 7j | OEK 34m | TKP 562d
Kalwers 3 | Gespeen 2 | Spn. Mat. 72
Gem. SI 98 | KKG - | KKS -
Kalwings: 19-06, 21-03, 22-07

SP 110076
SANTAPINE CABANA
Spn Mat. 76

FR 100039
SANBACH BORNA
Oud. 13j | OEK 33m | TKP 410d
Kalwers 10 | Gespeen 4 | Spn. Mat. 124
Gem. SI 93 | Spn. Mat. 124

HHB 140021
SANBOD OSCAR 14/21
Spn Mat. 71

JH 140025
SANTARUST CARA 1
Oud. 11j | OEK 28m | TKP 386d
Kalwers 9 | Gespeen 2 | Spn. Mat. 89
Gem. SI 100 | Spn. Mat. 89

KT 080007
KOCHBO PAPPARAZZI

SP 060099
SANTAPINE X-TENT
Oud. 9j | Gem. SI 107
Kalwers 5 | Gespeen 5

ER 000015
CE-RON RAFT 15

FR 080278
SANBACH O8 278
Oud. 8j | Gem. SI 102
Kalwers 5 | Gespeen 2

KVS 070172
KLEYNHANSVELDE 07 172

HHB 090023 Pch
SANBOD JENNA
Oud. 15j | Gem. SI 101
Kalwers 12 | Gespeen 5

DT 060316
RENSBOU MNR PERFEK 06 316

ER 030008
CE-RON CARA 03 08
Oud. 15j | Gem. SI 104
Kalwers 10 | Gespeen 7

KOEIWAARDE 98

95	Kalfgemak Waarde
103	Kalfgroei Waarde
95	Melk Waarde
98	Onderhoudswaarde
102	Vrugbaarheidswaarde

GROEI WAARDE 114

KARKAS WAARDE 106

PRODUKSIE WAARDE 100

LOGIX
GENETICS CENTRA
EBV Analise 2025-08-19

Kalf en Moeder					Vrugbaarheid			
Geb. Dir.	Geb. Mat.	Spn. Dir.	Spn. Mat.	Skr. Omtr.	Vers Vrugb.	Koei Vrugb.	Lanklew.	
98	91	103	95	99	103	102	97	
72%	50%	66%	53%	44%	48%	28%	53%	

Na-Speen Groei			Raam			Karkas		
Na-Speen	GDT	VOV	Volw. Gewig	Hoogte	Lengte	OSO	Vet	Mar
107	121	122	101	97	105	109	79	93
46%	40%	41%	23%	45%	43%	41%	39%	38%

Geb. Gewig	205D Gewig	365D Gewig	540D Gewig	GDT Indeks	VOV Indeks	Skrotum	LH
33kg	230kg 112 (3)	304kg 96 (3)	-	-	-	- (B1)	-



Miostatien	
Q204X	Skoon
NT821	Skoon
F94L	Skoon

VERKOPER OPMERKINGS: Moenie die bul miskyk nie. Bul met besondere breedte, lengte and diepte. Dikgat bul wat baie vleis dra. Een van ons beste. Skrotum van 41,5cm.

LOT 4 (M)



SP 220058 P
SANTAPINE SP220058

BUL



PINEKLOOF TRUST

Ladybrand, Free State
0824102401
pinnacle.santas@gmail.com

P.O. BOX 287, LADYBRAND, 9745

Kuddeboek	SP
Geb. dtm	2022-05-26
Oud.	3j 3m
Inteling	0%
DNS	U20484U001

JH 170074 HH
SANTARUST KIETZMAN
Spn Mat. 119

Ouerskap	Vaar	Moer
DNS	✓	
Genomies		

SP 150060 HH
SANTAPINE GWEN
Oud. 9j | OEK 30m | TKP 367d
Kalwers 7 | Gespeen 6 | Spn. Mat. 110
Gem. SI 106 | KKG - | KKS -

KTZ 120010 P
BOMVU KTZ120010 ET
Spn Mat. 99

KVS 140210
KLEYNHANSVELDE KVS140210
Oud. 10j | OEK 36m | TKP 425d
Kalwers 7 | Gespeen 6 | Spn. Mat. 117
Gem. SI 102 | Spn. Mat. 117

SP 100088
SANTAPINE BEEFMAKER
Spn Mat. 96

SP 090065
SANTAPINE AMALIA
Oud. 13j | OEK 31m | TKP 408d
Kalwers 9 | Gespeen 7 | Spn. Mat. 122
Gem. SI 104 | Spn. Mat. 122

KSS 080009
KROONSPRUIT 08 09

AJ 030028 P
SANTADALE 03 28
Oud. 16j | Gem. SI -
Kalwers 9 | Gespeen -

DG 060046
DANIE MALAN 06 46

CT 050002
CE-PAR STOFFLINE
Oud. 18j | Gem. SI 105
Kalwers 11 | Gespeen 2

SP 070037
SANTAPINE YOB

SP 050025
SANTAPINE WAITRESS
Oud. 11j | Gem. SI 109
Kalwers 7 | Gespeen 6

SP 030025
SANTAPINE ULTIMATE

HBF 020065
WHITE HORN OCTOBER
Oud. 13j | Gem. SI 105
Kalwers 10 | Gespeen 8

KOEIWAARDE 115

83	Kalfgemak Waarde
116	Kalfgroei Waarde
115	Melk Waarde
90	Onderhoudswaarde
105	Vrugbaarheidswaarde

GROEI WAARDE 131

KARKAS WAARDE 129

PRODUKSIE WAARDE 118

LOGIX
GENETICS CENTRA
EBV Analise 2025-08-19

Kalf en Moeder					Vrugbaarheid			
Geb. Dir.	Geb. Mat.	Spn. Dir.	Spn. Mat.	Skr. Omtr.	Vers Vrugb.	Koei Vrugb.	Lanklew.	
84	98	116	115	116	91	113	109	
46%	34%	70%	51%	42%	47%	25%	48%	

Na-Speen Groei			Raam			Karkas		
Na-Speen	GDT	VOV	Volw. Gewig	Hoogte	Lengte	OSO	Vet	Mar
122	132	120	109	119	124	110	124	111
32%	36%	23%	25%	42%	40%	36%	33%	31%

Geb. Gewig	205D Gewig	365D Gewig	540D Gewig	GDT Indeks	VOV Indeks	Skrotum	LH
-	248kg 103 (10)	-	-	-	-	-	-



Miostatien	
Q204X	Skoon
NT821	Draer
F94L	Skoon

VERKOPER OPMERKINGS: What a Bull! Polled bull with everything you want in a bull. Bull with tremendous length and width of body with good bone. The complete package. Used in the herd. Scrotal of 46cm.

LOT 5 (M)



SP 220063 P
SANTAPINE SP220063

BULL



PINEKLOOF TRUST

Ladybrand, Free State
0824102401
pinnacle.santas@gmail.com

P.O. BOX 287, LADYBRAND, 9745



Myostatin	
Q204X	Free
NT821	Carrier
F94L	Free

Herd Book	SP
Birth date	2022-06-03
Age	3y 3m
Inbreeding	1%
DNA	ZOCA2025-87237

HH 170045 HH
PINNACLE OUTPOST
Wean Mat. 89

Parentage	Sire	Dam
DNA	✓	
Genomic		

SP 170087
SANTAPINE IVORY
Age 7y | AFC 29m | ICP 436d
Calves 5 | Weaned 4 | Wean Mat. 109
Avg. WI 100 | CCB - | CCW 30.5
Calvings: 20-04, 21-05, 22-06, 23-11, 25-01

LL 120206 HH
LOCKLORE LL120206
Wean Mat. 99

HH 130031
PINNACLE KONTIKI
Age 5y | AFC 35m | ICP 393d
Calves 2 | Weaned 2 | Wean Mat. 75
Avg. WI 99 | Wean Mat. 75

SP 140020 HH
SANTAPINE FIREMAN
Wean Mat. 123

SP 140079
SANTAPINE FRAGMENT
Age 3y | AFC 35m | ICP -
Calves 1 | Weaned 1 | Wean Mat. 97
Avg. WI 87 | Wean Mat. 97

LL 090075
LOCKLORE LL090075
GR 050047
GANADO ROJO 05 47
Age 18y | Avg. WI 104
Calves 12 | Weaned 10
DJW 080041
CONSORT 08 41
K 070054
KORINGLAND 07 54
Age 9y | Avg. WI 89
Calves 6 | Weaned 5
23
YARRAWONGA DICTATOR
SP 110048 HH
SANTAPINE CONNIE
Age 12y | Avg. WI 113
Calves 9 | Weaned 7
HH 100019
PINNACLE HAMILTON
SP 070008
SANTAPINE YOLANDE
Age 13y | Avg. WI 103
Calves 11 | Weaned 9

COW VALUE 97

93	Calving Ease Value
104	Calf Growth Value
99	Milk Value
92	Maintenance Value
97	Fertility Value

GROWTH VALUE 106

CARCASS VALUE 101

PRODUCTION VALUE 97



Calf and Mother				Fertility			
Birth Dir.	Birth Mat.	Wean Dir.	Wean Mat.	Scr. Circ.	Heifer Fert.	Cow Fert.	Longev.
95	97	104	99	108	93	105	96
45%	29%	61%	52%	26%	49%	26%	50%

Post-Wean Growth			Frame			Carcass		
Post Wean	ADG	FCR	Mature Weight	Height	Length	EMA	Fat	Mar
101	105	106	108	99	103	90	93	111
25%	23%	19%	31%	26%	25%	22%	20%	19%

Birth Weight	205D Weight	365D Weight	540D Weight	ADG Index	FCR Index	Scrotum	LH
-	262kg 100 (1)	-	-	-	-	-	-

SELLER REMARKS: Scurred bull with length and width. Bull with a lot of potential. Scrotal of 40cm.

LOT 6 (M)



FR 210064
SANBACH PERCY

BULL



SANBACH TRUST

Excelsior, Free State
0827752408
jorinarautenbach@gmail.com

PLAAS LINANA 1303, EXCELSIOR, 9760



Myostatin	
Q204X	Not Tested
NT821	Not Tested
F94L	Not Tested

Herd Book	SP
Birth date	2021-09-01
Age	4y
Inbreeding	1%
DNA	ZOCA2024-67505

DJW 170096 Pch
CONSORT 170096DJW
Wean Mat. 107

Parentage	Sire	Dam
DNA	✓	
Genomic		

FR 180012
SANBACH LIBBY
Age 7y | AFC 31m | ICP 468d
Calves 4 | Weaned 3 | Wean Mat. 87
Avg. WI 106 | CCB - | CCW -
Calvings: 20-09, 21-09, 22-12, 24-07

DJW 130073
CONSORT 13073DJW
Wean Mat. 79

DJW 110035 Pch
CONSORT 11035DJW
Age 11y | AFC 26m | ICP 410d
Calves 8 | Weaned 2 | Wean Mat. 122
Avg. WI 107 | Wean Mat. 122

SP 110076
SANTAPINE CABANA
Wean Mat. 76

FR 120040
SANBACH DIFRENT
Age 12y | AFC 31m | ICP 399d
Calves 10 | Weaned 9 | Wean Mat. 81
Avg. WI 90 | Wean Mat. 81

DT 100129
RENSBOU WAKKERBERG
DJW 060064
CONSORT 06 64
Age 10y | Avg. WI 103
Calves 7 | Weaned 5
DJW 070061
CONSORT 07 61
DJW 990044
CONSORT 9944
Age 14y | Avg. WI 111
Calves 10 | Weaned 8
KT 080007
KOCHBO PAPPARAZZI
SP 060099
SANTAPINE X-TENT
Age 9y | Avg. WI 107
Calves 5 | Weaned 5
SP 080078
SANTAPINE ZADOC
FR 050055
SANBACH 05 55
Age 10y | Avg. WI 99
Calves 7 | Weaned 1

COW VALUE 110

85	Calving Ease Value
122	Calf Growth Value
95	Milk Value
87	Maintenance Value
98	Fertility Value

GROWTH VALUE 117

CARCASS VALUE 116

PRODUCTION VALUE 110



Calf and Mother				Fertility			
Birth Dir.	Birth Mat.	Wean Dir.	Wean Mat.	Scr. Circ.	Heifer Fert.	Cow Fert.	Longev.
84	104	122	95	121	86	106	110
44%	34%	69%	49%	35%	42%	26%	48%

Post-Wean Growth			Frame			Carcass		
Post Wean	ADG	FCR	Mature Weight	Height	Length	EMA	Fat	Mar
122	125	128	115	108	113	124	78	102
34%	31%	20%	20%	35%	33%	31%	28%	28%

Birth Weight	205D Weight	365D Weight	540D Weight	ADG Index	FCR Index	Scrotum	LH
-	276kg 117 (16)	-	-	-	-	-	-

SELLER REMARKS: Breë bul met goeie vleiseienskappe. Bul met houding. Skrotum van 47cm.

LOT 7 (M)



OLG 220041
OPLAAS GELUK SVEN

BUL



H. DU TOIT

Heidelberg, Gauteng
admin@sisutradings.co.za

T/A OPLAAS GELUK BOERDERY,
POSTNET SUITE #516, PRIVATE
BAG H607, HEIDELBERG, 1441

Kuddeboek	SP
Geb. dtm	2022-09-24
Oud.	2j 11m
Inteling	0%
DNS	ZOCA2025-88205

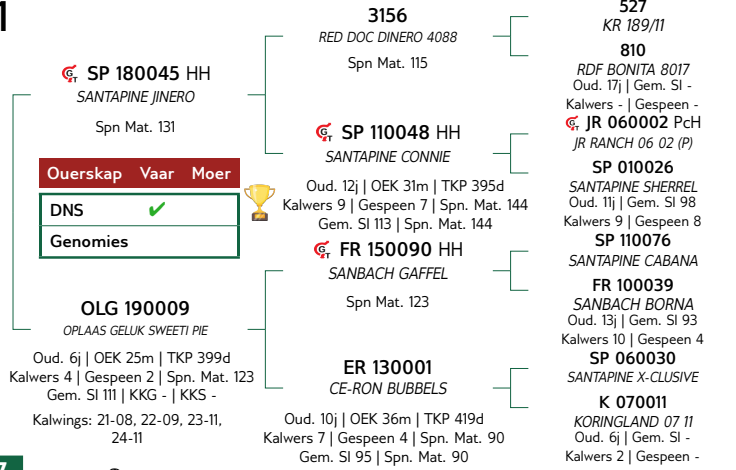
KOEIWAARDE	127
76	Kalfgemak Waarde
124	Kalfgroei Waarde
125	Melk Waarde
79	Onderhoudswaarde
115	Vrugbaarheidswaarde
GROEI WAARDE	131
KARKAS WAARDE	132
PRODUKSIE WAARDE	129



Miostatien	
Q204X	Skoon
NT821	Skoon
F94L	Skoon

Geb. Gewig	205D Gewig	365D Gewig	540D Gewig	GDT Indeks	VOV Indeks	Skrotum	LH
37kg	299kg 120 (2)	-	-	-	-	-	-

VERKOPER OPMERKINGS: Bul met goeie manlikheid en breedte. Baie goed in balans. Skrotum van 37cm.



Kalf en Moeder				Vrugbaarheid			
Geb. Dir.	Geb. Mat.	Spn. Dir.	Spn. Mat.	Skr. Omtr.	Vers Vrugb.	Koei Vrugb.	Lanklew.
85	76	124	125	127	111	110	112
72%	44%	68%	49%	42%	47%	22%	47%

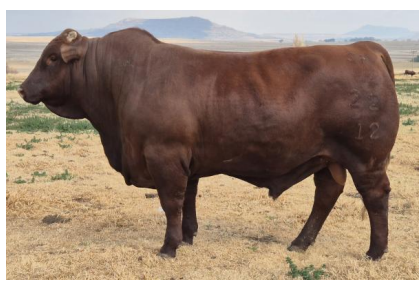
Na-Speen Groei			Raam			Karkas		
Na-Speen	GDT	VOV	Volw. Gewig	Hoogte	Lengte	OSO	Vet	Mar
136	135	134	122	121	124	119	114	117
34%	36%	41%	22%	43%	41%	37%	33%	32%

LOT 8 (M)



SP 220012
SANTAPINE SP220012

BUL



PINEKLOOF TRUST

Ladybrand, Free State
0824102401
pinnacle.santas@gmail.com

P.O. BOX 287,,LADYBRAND, 9745

Kuddeboek	SP
Geb. dtm	2022-04-12
Oud.	3j 5m
Inteling	2%
DNS	ZOCA2025-87236

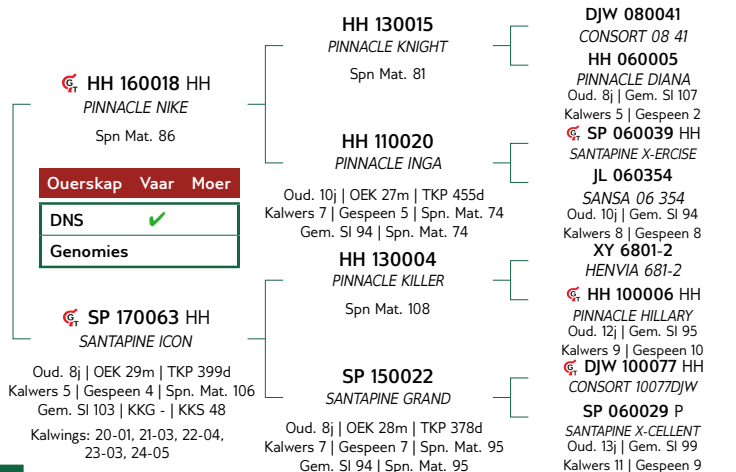
KOEIWAARDE	110
87	Kalfgemak Waarde
120	Kalfgroei Waarde
94	Melk Waarde
86	Onderhoudswaarde
102	Vrugbaarheidswaarde
GROEI WAARDE	115
KARKAS WAARDE	121
PRODUKSIE WAARDE	110



Miostatien	
Q204X	Skoon
NT821	Draer
F94L	Skoon

Geb. Gewig	205D Gewig	365D Gewig	540D Gewig	GDT Indeks	VOV Indeks	Skrotum	LH
-	299kg 117 (6)	-	-	-	-	-	-

VERKOPER OPMERKINGS: Bul met goeie manlikheid en skede. Bul met baie potensiaal. Kort, dik en diep. Skrotum van 38cm.



Kalf en Moeder				Vrugbaarheid			
Geb. Dir.	Geb. Mat.	Spn. Dir.	Spn. Mat.	Skr. Omtr.	Vers Vrugb.	Koei Vrugb.	Lanklew.
80	111	120	94	103	100	104	98
36%	30%	69%	49%	30%	42%	27%	48%

Na-Speen Groei			Raam			Karkas		
Na-Speen	GDT	VOV	Volw. Gewig	Hoogte	Lengte	OSO	Vet	Mar
117	118	119	116	122	125	121	96	112
28%	27%	25%	25%	29%	28%	26%	24%	23%

LOT 9 (M)



SP 220068
SANTAPINE SP220068

BULL



PINEKLOOF TRUST

Ladybrand, Free State
0824102401
pinnacle.santas@gmail.com

P.O. BOX 287, LADYBRAND, 9745

Herd Book	SP
Birth date	2022-08-26
Age	3y
Inbreeding	1%
DNA	ZOCA2025-87245

RD 170020 HH
RED DIAMOND APOLLO
Wean Mat. 99

Parentage	Sire	Dam
DNA	✓	
Genomic		

HH 190024
PINNACLE QUAIN
Age 5y | AFC 35m | ICP 395d
Calves 3 | Weaned 2 | Wean Mat. 101
Avg. WI 114 | CCB - | CCW 41.5
Calvings: 22-08, 23-11, 24-10

VV 120052 HH
VALLEY-VENTURE VV120052
Wean Mat. 101

SP 140029
SANTAPINE FLICK
Age 11y | AFC 37m | ICP 381d
Calves 8 | Weaned 3 | Wean Mat. 102
Avg. WI 105 | Wean Mat. 102

HH 130004
PINNACLE KILLER
Wean Mat. 108

HH 100021
PINNACLE HAYLEE
Age 12y | AFC 35m | ICP 366d
Calves 9 | Weaned 8 | Wean Mat. 59
Avg. WI 85 | Wean Mat. 59

VV 020194 HH
VALLEY-VENTURE CHAMP 02 194
VV 010143
VALLEY-VENTURE 01 143
Age 14y | Avg. WI 101
Calves 10 | Weaned 9

HH 110024
PINNACLE ICEMAN
SP 090033 P
SANTAPINE AHOY
Age 7y | Avg. WI 105
Calves 4 | Weaned 4

XY 6801-2
HENVIA 681-2
HH 100006 HH
PINNACLE HILLARY
Age 12y | Avg. WI 95
Calves 9 | Weaned 10

KVS 060145
KLEYNHANSVELDE 06 145
JL 060354
SANSA 06 354
Age 10y | Avg. WI 94
Calves 8 | Weaned 8

COW VALUE 120

88	Calving Ease Value
128	Calf Growth Value
95	Milk Value
86	Maintenance Value
101	Fertility Value

GROWTH VALUE 117

CARCASS VALUE 122

PRODUCTION VALUE 119



Calf and Mother				Fertility			
Birth Dir.	Birth Mat.	Wean Dir.	Wean Mat.	Scr. Circ.	Heifer Fert.	Cow Fert.	Longev.
77	114	128	95	119	94	109	99
49%	36%	70%	48%	32%	38%	26%	48%

Post-Wean Growth			Frame			Carcass		
Post Wean	ADG	FCR	Mature Weight	Height	Length	EMA	Fat	Mar
122	122	120	116	124	124	126	95	105
28%	28%	23%	22%	32%	30%	26%	24%	23%

Birth Weight	205D Weight	365D Weight	540D Weight	ADG Index	FCR Index	Scrotum	LH
-	262kg 126 (12)	-	-	-	-	-	-



Myostatin	
Q204X	Free
NT821	Free
F94L	Free

SELLER REMARKS: Bull with good length and a tidy sheath. Myostatin free. Scrotal of 41cm.

LOT 10 (M)



FR 220039
SANBACH SAILOR

BULL



SANBACH TRUST

Excelsior, Free State
0827752408
jorinarautenbach@gmail.com

PLAAS LINANA 1303, EXCELSIOR, 9760

Herd Book	SP
Birth date	2022-07-12
Age	3y 2m
Inbreeding	0%
DNA	ZOCA2025-86305

SP 140020 HH
SANTAPINE FIREMAN
Wean Mat. 123

Parentage	Sire	Dam
DNA	✓	
Genomic		

FR 150080
SANBACH GINGER
Age 10y | AFC 30m | ICP 396d
Calves 7 | Weaned 7 | Wean Mat. 88
Avg. WI 100 | CCB - | CCW -
Calvings: 18-02, 19-06, 20-07, 21-08, 22-07, 23-07, 24-08

23
YARRAWONGA DICTATOR
Wean Mat. 99

SP 110048 HH
SANTAPINE CONNIE
Age 12y | AFC 31m | ICP 395d
Calves 9 | Weaned 7 | Wean Mat. 144
Avg. WI 113 | Wean Mat. 144

SP 110076
SANTAPINE CABANA
Wean Mat. 76

FR 110040
SANBACH CHEVY
Age 4y | AFC 30m | ICP 427d
Calves 3 | Weaned 2 | Wean Mat. 85
Avg. WI 91 | Wean Mat. 85

WACO ARMADA
WACO ARMADA
YARRAWONGA C265
YARRAWONGA C265
Age 38y | Avg. WI -
Calves - | Weaned -

JR 060002 Pch
JR RANCH 06 02 (P)
SP 010026
SANTAPINE SHERREL
Age 11y | Avg. WI 98
Calves 9 | Weaned 8

KT 080007
KOCHBO PAPPARAZZI
SP 060099
SANTAPINE X-TENT
Age 9y | Avg. WI 107
Calves 5 | Weaned 5

ER 000015
CE-RON RAFT 15
FR 050166
SANBACH 05 166
Age 10y | Avg. WI 78
Calves 6 | Weaned 1

COW VALUE 125

96	Calving Ease Value
109	Calf Growth Value
105	Milk Value
95	Maintenance Value
136	Fertility Value

GROWTH VALUE 114

CARCASS VALUE 112

PRODUCTION VALUE 123



Calf and Mother				Fertility			
Birth Dir.	Birth Mat.	Wean Dir.	Wean Mat.	Scr. Circ.	Heifer Fert.	Cow Fert.	Longev.
100	88	109	105	108	126	135	112
52%	42%	72%	61%	42%	54%	35%	55%

Post-Wean Growth			Frame			Carcass		
Post Wean	ADG	FCR	Mature Weight	Height	Length	EMA	Fat	Mar
110	117	122	104	95	102	88	88	118
34%	37%	33%	35%	43%	41%	39%	36%	35%

Birth Weight	205D Weight	365D Weight	540D Weight	ADG Index	FCR Index	Scrotum	LH
-	251kg 100 (4)	-	-	-	-	-	-



Myostatin	
Q204X	Free
NT821	Free
F94L	Free

SELLER REMARKS: Bul wat goeie lengte en breedte het. Goed in balans. Skrotum van 41,5cm.

LOT 11 (M)



FR 22045 SC
SANBACH SAWYER

BUL



Kuddeboek	SP
Geb. dtm	2022-07-25
Oud.	3j 1m
Inteling	2%
DNS	ZOCA2025-86306

FR 170061 HH
SANBACH KAYDEN
Spn Mat. 95

Ouerskap	Vaar	Moer
DNS	✓	
Genomies		

FR 180052
SANBACH MARCELLE
Oud. 7j | OEK 30m | TKP 442d
Kalwers 4 | Gespeen 4 | Spn. Mat. 100
Gem. SI 106 | KKG - | KKS -
Kalwings: 21-02, 22-07, 23-07, 24-09

SP 110076
SANTAPINE CABANA
Spn Mat. 76

FR 120081 P
SANBACH DENO
Oud. 12j | OEK 26m | TKP 433d
Kalwers 8 | Gespeen 8 | Spn. Mat. 98
Gem. SI 95 | Spn. Mat. 98

SP 100007
SANTAPINE BAILIE
Spn Mat. 71

FR 090043
SANBACH AMANDEL
Oud. 10j | OEK 36m | TKP 404d
Kalwers 7 | Gespeen 6 | Spn. Mat. 115
Gem. SI 102 | Spn. Mat. 115

KT 080007
KOCHBO PAPPARAZZI
SP 060099
SANTAPINE X-TENT
Oud. 9j | Gem. SI 107
Kalwers 5 | Gespeen 5
ER 000015
CE-RON RAFT 15
FR 090016
SANBACH ASTER
Oud. 14j | Gem. SI 97
Kalwers 9 | Gespeen 5
CB011562
HARRIS YOGI AUST 1562
SP 070040
SANTAPINE YUKON
Oud. 13j | Gem. SI 89
Kalwers 11 | Gespeen 9
SP 050001
SANTAPINE WALLY
FR 050020 P
SANBACH 05 20
Oud. 17j | Gem. SI 90
Kalwers 14 | Gespeen 7

SANBACH TRUST

Excelsior, Free State
0827752408
jorinarautenbach@gmail.com

PLAAS LINANA 1303, EXCELSIOR, 9760

GEBRUIK IN KUDDE (1)



Miostatien	
Q204X	Skoon
NT821	Draer
F94L	Skoon

KOEIWAARDE 100

90	Kalngemak Waarde
108	Kalngroei Waarde
97	Melk Waarde
95	Onderhoudswaarde
98	Vrugbaarheidswaarde

GROEI WAARDE 115

KARKAS WAARDE 107

PRODUKSIE WAARDE 101

Geb. Gewig	205D Gewig	365D Gewig	540D Gewig	GDT Indeks	VOV Indeks	Skrotum	LH
-	263kg 105 (4)	-	-	-	-	-	-



Kalf en Moeder				Vrugbaarheid			
Geb. Dir.	Geb. Mat.	Spn. Dir.	Spn. Mat.	Skr. Omtr.	Vers Vrugb.	Koei Vrugb.	Lanklew.
93	96	108	97	113	94	95	112
35%	30%	70%	52%	30%	45%	26%	52%

Na-Speen Groei			Raam			Karkas		
Na-Speen	GDT	VOV	Volw. Gewig	Hoogte	Lengte	OSO	Vet	Mar
113	118	119	104	103	104	107	78	93
26%	27%	23%	17%	32%	29%	27%	26%	25%

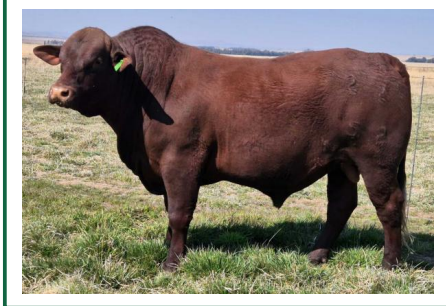
VERKOPER OPMERKINGS: Harde bul met goeie vleiseienskappe. Skrotum van 43cm.

LOT 12 (M)



OLG 220052 P
OPLAAS GELUK AARON

BUL



Kuddeboek	SP
Geb. dtm	2022-10-30
Oud.	2j 10m
Inteling	0%
DNS	ZOCA2025-88208

FR 150093 HH
SANBACH GEVAARLIK
Spn Mat. 117

Ouerskap	Vaar	Moer
DNS	✓	
Genomies		

LL 150099 P
LOCKLORE LLI50099
Oud. 10j | OEK 39m | TKP 374d
Kalwers 7 | Gespeen 5 | Spn. Mat. 96
Gem. SI 104 | KKG - | KKS -
Kalwings: 18-10, 19-10, 20-09, 21-10, 22-10, 23-10, 24-12

SP 110076
SANTAPINE CABANA
Spn Mat. 76

FR 060197
SANBACH 06 197
Oud. 15j | OEK - | TKP 360d
Kalwers 13 | Gespeen 5 | Spn. Mat. 143
Gem. SI 109 | Spn. Mat. 143

GR 040002
GANADO ROJO 04 2
Spn Mat. 82

LL 120005 P
LOCKLORE LLI20005
Oud. 8j | OEK 25m | TKP 444d
Kalwers 5 | Gespeen 5 | Spn. Mat. 84
Gem. SI 87 | Spn. Mat. 84

KT 080007
KOCHBO PAPPARAZZI
SP 060099
SANTAPINE X-TENT
Oud. 9j | Gem. SI 107
Kalwers 5 | Gespeen 5
SV 000237
SANDFONTEIN BILL
LL 980118 P
LOCKLORE TARZAN 3 98 118
GR 990054
GANADO ROJO JANE 3 9954
Oud. 26j | Gem. SI 104
Kalwers 4 | Gespeen 3
DT 060283
RENSBOU 06 283
LL 070149
LOCKLORE 07 149
Oud. 8j | Gem. SI 101
Kalwers 5 | Gespeen 5

H. DU TOIT

Heidelberg, Gauteng
admin@sisutrading.co.za

T/A OPLAAS GELUK BOERDERY,
POSTNET SUITE #516, PIVATE
BAG H607, HEIDELBERG, 1441



Miostatien	
Q204X	Skoon
NT821	Draer
F94L	Skoon

KOEIWAARDE 104

91	Kalngemak Waarde
108	Kalngroei Waarde
106	Melk Waarde
93	Onderhoudswaarde
99	Vrugbaarheidswaarde

GROEI WAARDE 111

KARKAS WAARDE 105

PRODUKSIE WAARDE 104

Geb. Gewig	205D Gewig	365D Gewig	540D Gewig	GDT Indeks	VOV Indeks	Skrotum	LH
34kg	273kg 100 (2)	259kg 97 (6)	-	-	-	(B1)	-



Kalf en Moeder				Vrugbaarheid			
Geb. Dir.	Geb. Mat.	Spn. Dir.	Spn. Mat.	Skr. Omtr.	Vers Vrugb.	Koei Vrugb.	Lanklew.
96	88	108	106	103	98	94	109
72%	49%	60%	56%	43%	47%	29%	55%

Na-Speen Groei			Raam			Karkas		
Na-Speen	GDT	VOV	Volw. Gewig	Hoogte	Lengte	OSO	Vet	Mar
116	113	105	106	102	110	119	68	92
36%	39%	38%	17%	44%	42%	37%	34%	33%

VERKOPER OPMERKINGS: Poena bul met lengte, diepte en kort skede. Skrotum van 37,4cm.

LOT 13 (M)



SP 220086
SANTAPINE SP220086

BULL



PINEKLOOF TRUST

Ladybrand, Free State
0824102401
pinnacle.santas@gmail.com

P.O. BOX 287, LADYBRAND, 9745



Myostatin	
Q204X	Free
NT821	Carrier
F94L	Free

Herd Book	SP
Birth date	2022-09-25
Age	2y 11m
Inbreeding	2%
DNA	ZOCA2025-87244

RD 170020 HH
RED DIAMOND APOLLO
Wean Mat. 99

Parentage	Sire	Dam
DNA	✓	
Genomic		

SP 190033
SANTAPINE KITCAT
Age 6y | AFC 40m | ICP 597d
Calves 2 | Weaned 2 | Wean Mat. 95
Avg. WI 109 | CCB - | CCW -
Calvings: 22-09, 24-05

VV 120052 HH
VALLEY-VENTURE VV120052
Wean Mat. 101

SP 140029
SANTAPINE FLICK
Age 11y | AFC 37m | ICP 381d
Calves 8 | Weaned 3 | Wean Mat. 102
Avg. WI 105 | Wean Mat. 102

JH 120035 HH
SANTARUST 12 35
Wean Mat. 74

SP 150058 HH
SANTAPINE GRANDEE
Age 9y | AFC 31m | ICP 368d
Calves 8 | Weaned 6 | Wean Mat. 111
Avg. WI 102 | Wean Mat. 111

VV 020194 HH
VALLEY-VENTURE CHAMP 02 194

VV 010143
VALLEY-VENTURE 01 143
Age 14y | Avg. WI 101
Calves 10 | Weaned 9

HH 110024
PINNACLE ICEMAN
SP 090033 P
SANTAPINE AHOY
Age 7y | Avg. WI 105
Calves 4 | Weaned 4

DT 060316
RENSBOU MNR PERFEX 06 316

ER 030059
CE-RON CANDY
Age 14y | Avg. WI 96
Calves 8 | Weaned 3

LL 120206 HH
LOCKLORE LL120206
SP 990086
SANTAPINE QUIZZY
Age 21y | Avg. WI 109
Calves 16 | Weaned 14

COW VALUE 113

88	Calving Ease Value
124	Calf Growth Value
97	Milk Value
83	Maintenance Value
95	Fertility Value

GROWTH VALUE 120

CARCASS VALUE 123

PRODUCTION VALUE 114



Calf and Mother				Fertility			
Birth Dir.	Birth Mat.	Wean Dir.	Wean Mat.	Scr. Circ.	Heifer Fert.	Cow Fert.	Longev.
82	114	124	97	115	82	107	104
48%	36%	70%	48%	32%	41%	26%	48%

Post-Wean Growth			Frame			Carcass		
Post Wean	ADG	FCR	Mature Weight	Height	Length	EMA	Fat	Mar
118	121	109	120	115	123	120	102	104
26%	28%	23%	17%	32%	31%	26%	24%	23%

Birth Weight	205D Weight	365D Weight	540D Weight	ADG Index	FCR Index	Scrotum	LH
-	230kg 108 (12)	-	-	-	-	-	-

SELLER REMARKS: Bull with good masculinity and body. Scrotal of 42cm.

LOT 14 (M)



SP 220030
SANTAPINE SP220030

BULL



PINEKLOOF TRUST

Ladybrand, Free State
0824102401
pinnacle.santas@gmail.com

P.O. BOX 287, LADYBRAND, 9745



Myostatin	
Q204X	Free
NT821	Free
F94L	Free

Herd Book	SP
Birth date	2022-04-28
Age	3y 4m
Inbreeding	0%
DNA	ZOCA2025-87247

JH 170074 HH
SANTARUST KIETZMAN
Wean Mat. 119

Parentage	Sire	Dam
DNA	✓	
Genomic		

HH 150032 HH
PINNACLE MAXI
Age 9y | AFC 30m | ICP 365d
Calves 8 | Weaned 7 | Wean Mat. 91
Avg. WI 98 | CCB - | CCW -
Calvings: 18-04, 19-05, 20-06, 21-05, 22-04, 23-04, 24-04, 25-04

KTZ 120010 P
BOMVU KTZ120010 ET
Wean Mat. 99

KVS 140210
KLEYNHANSVELDE KVS140210
Age 10y | AFC 36m | ICP 425d
Calves 7 | Weaned 6 | Wean Mat. 117
Avg. WI 102 | Wean Mat. 117

SP 100088
SANTAPINE BEEFMAKER
Wean Mat. 96

HH 090008
PINNACLE GLORIA
Age 12y | AFC 34m | ICP 385d
Calves 9 | Weaned 7 | Wean Mat. 106
Avg. WI 106 | Wean Mat. 106

KSS 080009
KROONSPRUIT 08 09

AJ 030028 P
SANTADALE 03 28
Age 16y | Avg. WI -
Calves 9 | Weaned -

DG 060046
DANIE MALAN 06 46

CT 050002
CE-PAR STOFFILINE
Age 18y | Avg. WI 105
Calves 11 | Weaned 2

SP 070037
SANTAPINE YOB
SP 050025
SANTAPINE WAITRESS
Age 11y | Avg. WI 109
Calves 7 | Weaned 6

ER 000015
CE-RON RAFT 15
DT 040332
RENSBOU 04332
Age 9y | Avg. WI 99
Calves 6 | Weaned 4

COW VALUE 105

89	Calving Ease Value
109	Calf Growth Value
106	Milk Value
94	Maintenance Value
100	Fertility Value

GROWTH VALUE 126

CARCASS VALUE 125

PRODUCTION VALUE 108



Calf and Mother				Fertility			
Birth Dir.	Birth Mat.	Wean Dir.	Wean Mat.	Scr. Circ.	Heifer Fert.	Cow Fert.	Longev.
93	91	109	106	112	87	108	110
44%	31%	70%	51%	42%	46%	23%	49%

Post-Wean Growth			Frame			Carcass		
Post Wean	ADG	FCR	Mature Weight	Height	Length	EMA	Fat	Mar
114	127	117	106	105	116	108	122	114
32%	37%	23%	20%	43%	41%	37%	34%	32%

Birth Weight	205D Weight	365D Weight	540D Weight	ADG Index	FCR Index	Scrotum	LH
-	229kg 94 (10)	-	-	-	-	-	-

SELLER REMARKS: Well balanced bull with good length and depth. Myostatin free. We rate this bull highly. Scrotal of 42cm.

LOT 15 (M)



SP 220036
SANTAPINE SP220036

BUL



PINEKLOOF TRUST

Ladybrand, Free State
0824102401
pinnacle.santas@gmail.com

P.O. BOX 287, LADYBRAND, 9745

Kuddeboek	SP
Geb. dtm	2022-05-03
Oud.	3j 4m
Inteling	0%
DNS	ZOCA2025-87233

KOEIWAARDE 124

89	Kalfgemak Waarde
131	Kalfgroei Waarde
103	Melk Waarde
71	Onderhoudswaarde
103	Vrugbaarheidswaarde

GROEI WAARDE 132

KARKAS WAARDE 133

PRODUKSIE WAARDE 127



Miostatien	
Q204X	Skoon
NT821	Draer
F94L	Skoon

Geb. Gewig	205D Gewig	365D Gewig	540D Gewig	GDT Indeks	VOV Indeks	Skrotum	LH
-	252kg 109 (18)	-	-	-	-	-	-

VERKOPER OPMERKINGS: Bull that catches your eye. Out of a top breeding cow. Scrotal of 39cm.

LL 120206 HH
LOCKLORE LL120206
Spn Mat. 99

HH 170045 HH
PINNACLE OUTPOST
Spn Mat. 89

HH 130031
PINNACLE KONTIKI
Oud. 5j | OEK 35m | TKP 393d
Kalwers 2 | Gespeen 2 | Spn. Mat. 75
Gem. SI 99 | Spn. Mat. 75

HH 150041 HH
PINNACLE MALUTI
Oud. 9j | OEK 27m | TKP 381d
Kalwers 7 | Gespeen 6 | Spn. Mat. 121
Gem. SI 111 | KKG - | KKS 41.7
Kalwings: 18-02, 19-05, 20-05, 21-06, 22-05, 23-05, 24-05

LL 090075
LOCKLORE LL090075
GR 050047
GANADO ROJO 05 47
Oud. 18j | Gem. SI 104
Kalwers 12 | Gespeen 10
DJW 080041
CONSORT 08 41
K 070054
KORINGLAND 07 54
Oud. 9j | Gem. SI 89
Kalwers 6 | Gespeen 5
SP 060039 HH
SANTAPINE X-ERCISE
SP 050053 P
SANTAPINE WACKY
Oud. 7j | Gem. SI 101
Kalwers 4 | Gespeen 4
JF 050051
CATHREW 05 51
JF 020139
02 139
Oud. 12j | Gem. SI 113
Kalwers 5 | Gespeen 3

SP 110037
SANTAPINE CROMWELL
Spn Mat. 85

JF 090150
CATHREW 09 150
Oud. 11j | OEK 34m | TKP 418d
Kalwers 8 | Gespeen 7 | Spn. Mat. 119
Gem. SI 105 | Spn. Mat. 119

Kalf en Moeder				Vrugbaarheid			
Geb. Dir.	Geb. Mat.	Spn. Dir.	Spn. Mat.	Skr. Omtr.	Vers Vrugb.	Koei Vrugb.	Lanklew.
76	116	131	103	116	99	106	103
45%	30%	72%	56%	28%	48%	25%	52%

Na-Speen Groei			Raam			Karkas		
Na-Speen	GDT	VOV	Volw. Gewig	Hoogte	Lengte	OSO	Vet	Mar
128	132	122	137	139	134	120	104	109
27%	25%	23%	30%	27%	26%	23%	21%	21%

LOT 16 (M)



FR 220052
SANBACH THEODORE

BUL



SANBACH TRUST

Excelsior, Free State
0827752408
jorinarautenbach@gmail.com

PLAAS LINANA 1303, EXCELSIOR, 9760

Kuddeboek	SP
Geb. dtm	2022-08-01
Oud.	3j 1m
Inteling	5%
DNS	ZOCA2025-86308

KOEIWAARDE 88

96	Kalfgemak Waarde
97	Kalfgroei Waarde
103	Melk Waarde
107	Onderhoudswaarde
80	Vrugbaarheidswaarde

GROEI WAARDE 106

KARKAS WAARDE 96

PRODUKSIE WAARDE 88



Miostatien	
Q204X	Skoon
NT821	Draer
F94L	Skoon

Geb. Gewig	205D Gewig	365D Gewig	540D Gewig	GDT Indeks	VOV Indeks	Skrotum	LH
-	247kg 98 (4)	-	-	-	-	-	-

VERKOPER OPMERKINGS: Bul met goeie breedte. Skrotum van 39,5cm.

FR 170061 HH
SANBACH KAYDEN
Spn Mat. 95

FR 160037
SANBACH HEILIE
Oud. 9j | OEK 35m | TKP 552d
Kalwers 5 | Gespeen 4 | Spn. Mat. 110
Gem. SI 107 | KKG - | KKS -
Kalwings: 19-06, 20-11, 22-08, 24-01, 25-06

SP 110076
SANTAPINE CABANA
Spn Mat. 76

FR 120081 P
SANBACH DENO
Oud. 12j | OEK 26m | TKP 433d
Kalwers 8 | Gespeen 8 | Spn. Mat. 98
Gem. SI 95 | Spn. Mat. 98

JO 080028
BIG J 08 28
Spn Mat. 106

FR 110059
SANBACH CRAZY
Oud. 13j | OEK 28m | TKP 427d
Kalwers 9 | Gespeen 6 | Spn. Mat. 80
Gem. SI 84 | Spn. Mat. 80

KT 080007
KOCHBO PAPPARAZZI
SP 060099
SANTAPINE X-TENT
Oud. 9j | Gem. SI 107
Kalwers 5 | Gespeen 5
ER 000015
CE-RON RAFT 15
FR 090016
SANBACH ASTER
Oud. 14j | Gem. SI 97
Kalwers 9 | Gespeen 5
JO 010138
BIG J BARON 01 138
JO 020086
BIG J 02 86
Oud. 11j | Gem. SI -
Kalwers 5 | Gespeen -
ER 000015
CE-RON RAFT 15
FR 080280
SANBACH 280
Oud. 8j | Gem. SI 101
Kalwers 5 | Gespeen 2

Kalf en Moeder				Vrugbaarheid			
Geb. Dir.	Geb. Mat.	Spn. Dir.	Spn. Mat.	Skr. Omtr.	Vers Vrugb.	Koei Vrugb.	Lanklew.
99	91	97	103	95	83	73	111
36%	33%	70%	51%	32%	45%	29%	51%

Na-Speen Groei			Raam			Karkas		
Na-Speen	GDT	VOV	Volw. Gewig	Hoogte	Lengte	OSO	Vet	Mar
102	110	110	90	96	99	98	74	93
28%	30%	26%	17%	33%	31%	27%	25%	25%

LOT 17 (M)



FR 220083
SANBACH TROY

BULL



SANBACH TRUST

Excelsior, Free State
0827752408
jorinarautenbach@gmail.com

PLAAS LINANA 1303, EXCELSIOR, 9760

Herd Book	SP
Birth date	2022-09-28
Age	2y 11m
Inbreeding	2%
DNA	ZOCA2025-86309

KT 180005 HH
KOCHBO ALADIN
Wean Mat. 83

Parentage	Sire	Dam
DNA	✓	
Genomic		

FR 170084
SANBACH KEELIE

Age 7y | AFC 27m | ICP 432d
Calves 5 | Weaned 4 | Wean Mat. 109
Avg. WI 109 | CCB - | CCW -
Calvings: 20-01, 21-09, 22-09,
23-10, 24-10

KT 140015
KOCHBO WACO
Wean Mat. 84

KT 100025
KOCHBO KTI00025
Age 11y | AFC 28m | ICP 370d
Calves 8 | Weaned 5 | Wean Mat. 96
Avg. WI 106 | Wean Mat. 96

CJ 130025 HH
EMMANEUL 13 25
Wean Mat. 91

FR 120075
SANBACH DAZZEL
Age 12y | AFC 30m | ICP 394d
Calves 10 | Weaned 9 | Wean Mat. 90
Avg. WI 94 | Wean Mat. 90

A552
YARRAWONGA TROOPER
KT 070011
KOCHBO 07 11
Age 10y | Avg. WI 105
Calves 6 | Weaned 4
VV 040074
VALLEY-VENTURE 04 74
KT 070008
KOCHBO SHOWGIRL 07 08
Age 6y | Avg. WI 100
Calves 3 | Weaned 3
SP 060030
SANTAPINE X-CLUSIVE
ER 050064
CE-RON 05 64
Age 6y | Avg. WI -
Calves 4 | Weaned -
AT 930013
RAFT 93 13
FR 100014
SANBACH BELINDA
Age 9y | Avg. WI 99
Calves 6 | Weaned 2

COW VALUE 110

85	Calving Ease Value
130	Calf Growth Value
92	Milk Value
84	Maintenance Value
80	Fertility Value

GROWTH VALUE -

CARCASS VALUE 129

PRODUCTION VALUE -

LOGIX
GENETICS
EBV Analysis 2025-08-19

Calf and Mother				Fertility			
Birth Dir.	Birth Mat.	Wean Dir.	Wean Mat.	Scr. Circ.	Heifer Fert.	Cow Fert.	Longev.
77	106	130	92	121	75	87	105
41%	32%	68%	47%	20%	40%	23%	45%

Post-Wean Growth			Frame			Carcass		
Post Wean	ADG	FCR	Mature Weight	Height	Length	EMA	Fat	Mar
123	129	118	119	130	132	128	100	106
18%	18%	16%	11%	19%	19%	15%	13%	13%

Birth Weight	205D Weight	365D Weight	540D Weight	ADG Index	FCR Index	Scrotum	LH
-	283kg 121 (24)	-	-	-	-	-	-



Myostatin	
Q204X	Free
NT821	Free
F94L	Free

SELLER REMARKS: Bul met breedte, diepte en houding. Skrotum van 41,5cm.

LOT 18 (M)



OLG 220018
OPLAAS GELUK CHAINBREAKER

BULL



H. DU TOIT

Heidelberg, Gauteng
admin@sistutrading.co.za

T/A OPLAAS GELUK BOERDERY,
POSTNET SUITE #516, PIVATE
BAG H607, HEIDELBERG, 1441

Herd Book	SP
Birth date	2022-06-20
Age	3y 3m
Inbreeding	4%
DNA	ZOCA2025-88204

FR 150090 HH
SANBACH GAFFEL
Wean Mat. 123

Parentage	Sire	Dam
DNA	✓	
Genomic		

BR 160027 P
BREEDE CHELSEA

Age 7y | AFC 30m | ICP 398d
Calves 5 | Weaned 4 | Wean Mat. 100
Avg. WI 100 | CCB - | CCW -
Calvings: 19-03, 20-02, 21-07,
22-06, 23-08

SP 110076
SANTAPINE CABANA
Wean Mat. 76

FR 100039
SANBACH BORNA
Age 13y | AFC 33m | ICP 410d
Calves 10 | Weaned 4 | Wean Mat. 124
Avg. WI 93 | Wean Mat. 124

KT 130034 P
KOCHBO KTI30034
Wean Mat. 97

VV 140043 HH
VALLEY-VENTURE VV140043
Age 9y | AFC 31m | ICP 388d
Calves 7 | Weaned 2 | Wean Mat. 104
Avg. WI 104 | Wean Mat. 104

KT 080007
KOCHBO PAPPARAZZI
SP 060099
SANTAPINE X-TENT
Age 9y | Avg. WI 107
Calves 5 | Weaned 5
ER 000015
CE-RON RAFT 15
FR 080278
SANBACH 08 278
Age 8y | Avg. WI 102
Calves 5 | Weaned 2
KT 100015
KOCHBO SHOTGUN
KT 110028
KOCHBO TIENKE
Age 3y | Avg. WI 109
Calves 2 | Weaned 1
VV 100040 HH
VALLEY-VENTURE VV100040
VV 110007
VALLEY-VENTURE VV110007
Age 10y | Avg. WI 101
Calves 7 | Weaned 7

COW VALUE 100

78	Calving Ease Value
107	Calf Growth Value
111	Milk Value
97	Maintenance Value
98	Fertility Value

GROWTH VALUE 113

CARCASS VALUE 106

PRODUCTION VALUE 101

LOGIX
GENETICS
EBV Analysis 2025-08-19

Calf and Mother				Fertility			
Birth Dir.	Birth Mat.	Wean Dir.	Wean Mat.	Scr. Circ.	Heifer Fert.	Cow Fert.	Longev.
85	84	107	111	99	97	102	96
73%	51%	69%	55%	43%	43%	28%	53%

Post-Wean Growth			Frame			Carcass		
Post Wean	ADG	FCR	Mature Weight	Height	Length	EMA	Fat	Mar
112	118	119	101	102	106	115	73	87
36%	39%	41%	20%	44%	42%	40%	38%	37%

Birth Weight	205D Weight	365D Weight	540D Weight	ADG Index	FCR Index	Scrotum	LH
35kg	259kg 99 (4)	-	-	-	-	-	-



Myostatin	
Q204X	Free
NT821	Free
F94L	Free

SELLER REMARKS: Bul met goeie diepte van lyf. Skrotum van 41cm.

LOT 19 (M)



BUL



PINEKLOOF TRUST

Ladybrand, Free State
0824102401
pinnacle.santas@gmail.com

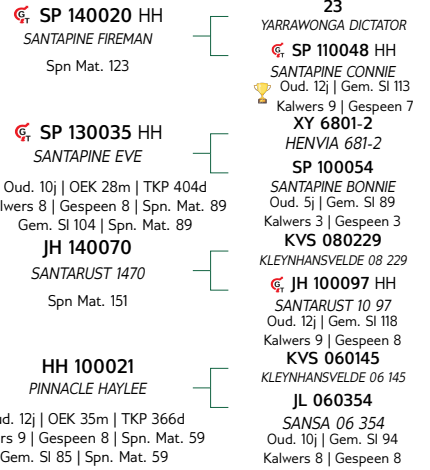
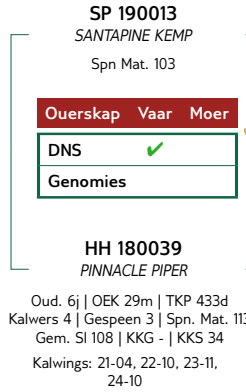
P.O. BOX 287, LADYBRAND, 9745



Miostation	
Q204X	Skoon
NT821	Draer
F94L	Skoon

SP 220108
SANTAPINE SP 220108

Kuddeboek	SP
Geb. dtm	2022-10-20
Oud.	2j 10m
Inteling	1%
DNS	ZOCA2025-87243



KOEIWAARDE	111
97	Kalfgemak Waarde
113	Kalfgroei Waarde
107	Melk Waarde
86	Onderhoudswaarde
97	Vrugbaarheidswaarde
GROEI WAARDE	112
KARKAS WAARDE	118
PRODUKSIE WAARDE	111



Kalf en Moeder					Vrugbaarheid			
Geb. Dir.	Geb. Mat.	Spn. Dir.	Spn. Mat.	Skr. Omtr.	Vers Vrugb.	Koei Vrugb.	Lanklew.	
97	102	113	107	113	100	99	94	
50%	28%	69%	48%	31%	40%	26%	44%	

Na-Speen Groei			Raam			Karkas		
Na-Speen	GDT	VOV	Volw. Gewig	Hoogte	Lengte	OSO	Vet	Mar
109	117	119	115	114	115	106	101	109
28%	27%	24%	22%	31%	29%	25%	22%	22%

Geb. Gewig	205D Gewig	365D Gewig	540D Gewig	GDT Indeks	VOV Indeks	Skrotum	LH
-	236kg 113 (23)	-	-	-	-	-	-

VERKOPER OPMERKINGS: Young bull with good masculinity. Scrotal of 38cm.

LOT 20 (M)



BUL



PINNACLE STUDS PTY LTD



Ladybrand, Free State
0824102401
pinnacle.santas@gmail.com

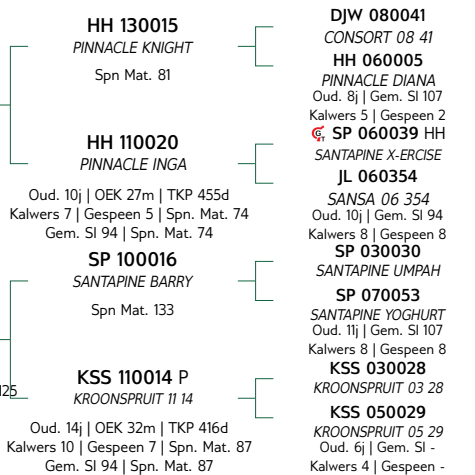
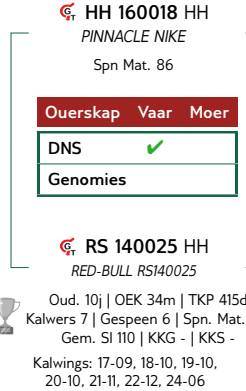
PO BOX 287, LADYBRAND, 9745



Miostation	
Q204X	Skoon
NT821	Draer
F94L	Skoon

HH 220005
PINNACLE HUNTER

Kuddeboek	SP
Geb. dtm	2022-12-03
Oud.	2j 9m
Inteling	2%
DNS	ZOCA2025-87214



KOEIWAARDE	101
84	Kalfgemak Waarde
114	Kalfgroei Waarde
106	Melk Waarde
82	Onderhoudswaarde
88	Vrugbaarheidswaarde
GROEI WAARDE	124
KARKAS WAARDE	122
PRODUKSIE WAARDE	104



Kalf en Moeder					Vrugbaarheid			
Geb. Dir.	Geb. Mat.	Spn. Dir.	Spn. Mat.	Skr. Omtr.	Vers Vrugb.	Koei Vrugb.	Lanklew.	
87	94	114	106	123	93	87	96	
43%	33%	57%	50%	35%	37%	25%	48%	

Na-Speen Groei			Raam			Karkas		
Na-Speen	GDT	VOV	Volw. Gewig	Hoogte	Lengte	OSO	Vet	Mar
114	125	125	120	111	114	110	93	97
26%	31%	31%	27%	35%	34%	30%	28%	27%

Geb. Gewig	205D Gewig	365D Gewig	540D Gewig	GDT Indeks	VOV Indeks	Skrotum	LH
-	274kg 110 (4)	-	-	-	-	-	-

VERKOPER OPMERKINGS: Bull with a good hindquarter. Scrotal of 42cm.

LOT 21 (M)



SP 22094 SC
SANTAPINE SP22094

BULL



PINEKLOOF TRUST

Ladybrand, Free State
0824102401
pinnacle.santas@gmail.com

P.O. BOX 287, LADYBRAND, 9745



Myostatin	
Q204X	Free
NT821	Free
F94L	Free

Herd Book	SP
Birth date	2022-10-01
Age	2y 11m
Inbreeding	1%
DNA	ZOCA2025-87241

COW VALUE 99

87	Calving Ease Value
121	Calf Growth Value
80	Milk Value
84	Maintenance Value
88	Fertility Value

GROWTH VALUE 111

CARCASS VALUE 113

PRODUCTION VALUE 100

Birth Weight	205D Weight	365D Weight	540D Weight	ADG Index	FCR Index	Scrotum	LH
-	236kg 113 (23)	-	-	-	-	-	-

SELLER REMARKS: Long bodied bull. Myostatin free. Scrotal of 39cm.

HH 170045 HH
PINNACLE OUTPOST
Wean Mat. 89

LL 120206 HH
LOCKLORE LL120206
Wean Mat. 99

HH 130031
PINNACLE KONTIKI
Age 5y | AFC 35m | ICP 393d
Calves 2 | Weaned 2 | Wean Mat. 75
Avg. WI 99 | Wean Mat. 75

HH 150034
PINNACLE MATRIARCH
Age 9y | AFC 35m | ICP 373d
Calves 7 | Weaned 7 | Wean Mat. 78
Avg. WI 93 | CCB - | CCW -
Calvings: 18-09, 19-10, 21-01, 21-11, 22-10, 23-09, 24-11

SP 110037
SANTAPINE CROMWELL
Wean Mat. 85

DJW 070010
CONSORT 07 10
Age 10y | AFC 36m | ICP 431d
Calves 7 | Weaned 5 | Wean Mat. 85
Avg. WI 94 | Wean Mat. 85

LL 090075
LOCKLORE LL090075
GR 050047
GANADO ROJO 05 47
Age 18y | Avg. WI 104
Calves 12 | Weaned 10
DJW 080041
CONSORT 08 41
K 070054
KORINGLAND 07 54
Age 9y | Avg. WI 89
Calves 6 | Weaned 5
SP 060039 HH
SANTAPINE X-ERCISE
SP 050053 P
SANTAPINE WACKY
Age 7y | Avg. WI 101
Calves 4 | Weaned 4
DJW 040053
CONSORT 04 53
DJW 990044
CONSORT 9944
Age 14y | Avg. WI 111
Calves 10 | Weaned 8



Calf and Mother				Fertility			
Birth Dir.	Birth Mat.	Wean Dir.	Wean Mat.	Scr. Circ.	Heifer Fert.	Cow Fert.	Longev.
80	112	121	80	100	84	97	97
48%	32%	72%	56%	33%	49%	27%	52%

Post-Wean Growth			Frame			Carcass		
Post Wean	ADG	FCR	Mature Weight	Height	Length	EMA	Fat	Mar
117	112	111	121	113	112	109	103	105
29%	29%	28%	31%	32%	31%	27%	25%	24%

LOT 23 (M)



FR 220106
SANBACH RED APOLLO

BULL



SANBACH TRUST

Excelsior, Free State
0827752408
jorinarautenbach@gmail.com

PLAAS LINANA 1303, EXCELSIOR, 9760



Myostatin	
Q204X	Free
NT821	Free
F94L	Free

Herd Book	SP
Birth date	2022-10-25
Age	2y 10m
Inbreeding	2%
DNA	ZOCA2025-86312

COW VALUE 103

98	Calving Ease Value
110	Calf Growth Value
83	Milk Value
97	Maintenance Value
102	Fertility Value

GROWTH VALUE 105

CARCASS VALUE 105

PRODUCTION VALUE 102

Birth Weight	205D Weight	365D Weight	540D Weight	ADG Index	FCR Index	Scrotum	LH
-	247kg 103 (24)	-	-	-	-	-	-

SELLER REMARKS: Skrotum van 42,5cm.

RD 170020 HH
RED DIAMOND APOLLO
Wean Mat. 99

VV 120052 HH
VALLEY-VENTURE VV120052
Wean Mat. 101

SP 140029
SANTAPINE FLICK
Age 11y | AFC 37m | ICP 381d
Calves 8 | Weaned 3 | Wean Mat. 102
Avg. WI 105 | Wean Mat. 102

JH 120035 HH
SANTARUST 12 35
Wean Mat. 74

SP 190080
SANTAPINE KODAK
Age 4y | AFC 35m | ICP -
Calves 1 | Weaned 1 | Wean Mat. 69
Avg. WI 103 | CCB - | CCW -
Calvings: 22-10

SP 070040
SANTAPINE YUKON
Age 13y | AFC 31m | ICP 393d
Calves 11 | Weaned 9 | Wean Mat. 55
Avg. WI 89 | Wean Mat. 55

VV 020194 HH
VALLEY-VENTURE CHAMP 02 194
VV 010143
VALLEY-VENTURE 01 143
Age 14y | Avg. WI 101
Calves 10 | Weaned 9
HH 110024
PINNACLE ICEMAN
SP 090033 P
SANTAPINE AHOY
Age 7y | Avg. WI 105
Calves 4 | Weaned 4
DT 060316
RENSBOU MNR PERFEK 06 316
ER 030059
CE-RON CANDY
Age 14y | Avg. WI 96
Calves 8 | Weaned 3
TGS0244
TOP GUN 244
SP 040050
SANTAPINE VEIL
Age 8y | Avg. WI 99
Calves 5 | Weaned 5



Calf and Mother				Fertility			
Birth Dir.	Birth Mat.	Wean Dir.	Wean Mat.	Scr. Circ.	Heifer Fert.	Cow Fert.	Longev.
96	110	110	83	101	96	107	103
48%	36%	70%	47%	32%	37%	24%	48%

Post-Wean Growth			Frame			Carcass		
Post Wean	ADG	FCR	Mature Weight	Height	Length	EMA	Fat	Mar
108	108	104	103	95	102	106	99	93
25%	29%	23%	17%	33%	32%	26%	24%	23%

LOT 24 (M)



OLG 220048 SC
OPLAAS GELUK EZRA

BUL



H. DU TOIT

Heidelberg, Gauteng
admin@sisutrading.co.za

T/A OPLAAS GELUK BOERDERY,
POSTNET SUITE #516, PRIVATE
BAG H607, HEIDELBERG, 1441



Miostatien	
Q204X	Skoon
NT821	Skoon
F94L	Skoon

Kuddeboek	SP
Geb. dtm	2022-10-26
Oud.	2j 10m
Inteling	0%
DNS	ZOCA2025-88206

FR 150093 HH
SANBACH GEVAARLIK
Spn Mat. 117

Ouerskap	✓
Vaar	✓
Moer	✓
DNS	✓
Genomies	

OLG 180004 P
OPLAAS GELUK ESTER
Oud. 7j | OEK 25m | TKP 440d
Kalwers 5 | Gespeen 4 | Spn. Mat. 102
Gem. SI 99 | KKG - | KKS -
Kalwings: 20-02, 21-11, 22-10,
23-09, 24-12

SP 110076
SANTAPINE CABANA
Spn Mat. 76

FR 060197
SANBACH 06 197
Oud. 15j | OEK - | TKP 360d
Kalwers 13 | Gespeen 5 | Spn. Mat. 143
Gem. SI 109 | Spn. Mat. 143

SP 080037 P
SANTAPINE ZAKUMI
Spn Mat. 88

SP 130087
SANTAPINE ETNA
Oud. 11j | OEK 34m | TKP 428d
Kalwers 8 | Gespeen 3 | Spn. Mat. 108
Gem. SI 101 | Spn. Mat. 108

KT 080007
KOCHBO PAPPARAZZI
SP 060099
SANTAPINE X-TENT
Oud. 9j | Gem. SI 107
Kalwers 5 | Gespeen 5
SV 000237
SANDFONTEIN BILL

CVF02022
BRIGGS MR CVF 2022
SP 050046 P
SANTAPINE WAFER
Oud. 3j | Gem. SI 88
Kalwers 1 | Gespeen 1
JO 080028
BIG J 08 28
SP 090053
SANTAPINE ALCOVE
Oud. 5j | Gem. SI 104
Kalwers 2 | Gespeen 1

KOEIWAARDE	99
86	Kalngemak Waarde
104	Kalngroei Waarde
110	Melk Waarde
100	Onderhoudswaarde
94	Vrugbaarheidswaarde
GROEI WAARDE	111
KARKAS WAARDE	106
PRODUKSIE WAARDE	99



Kalf en Moeder				Vrugbaarheid			
Geb. Dir.	Geb. Mat.	Spn. Dir.	Spn. Mat.	Skr. Omtr.	Vers Vrugb.	Koei Vrugb.	Lanklew.
92	86	104	110	92	91	89	114
72%	49%	57%	55%	46%	49%	26%	54%

Na-Speen Groei			Raam			Karkas		
Na-Speen	GDT	VOV	Volw. Gewig	Hoogte	Lengte	OSO	Vet	Mar
111	115	109	98	103	111	119	73	91
36%	41%	44%	18%	47%	45%	41%	38%	37%

Geb. Gewig	205D Gewig	365D Gewig	540D Gewig	GDT Indeks	VOV Indeks	Skrotum	LH
37kg	274kg 100 (2)	262kg 98 (6)	-	-	-	(B1)	-

VERKOPER OPMERKINGS: Poena bul met sterk kop. Skrotum van 39cm.

LOT 25 (M)



SP 220084
SANTAPINE SP220084

BUL



PINEKLOOF TRUST

Ladybrand, Free State
0824102401
pinnacle.santas@gmail.com

P.O. BOX 287, LADYBRAND, 9745



Miostatien	
Q204X	Skoon
NT821	Draer
F94L	Skoon

Kuddeboek	SP
Geb. dtm	2022-09-24
Oud.	2j 11m
Inteling	1%
DNS	ZOCA2025-87238

VV 040074
VALLEY-VENTURE 04 74
Spn Mat. 92

Ouerskap	✓
Vaar	✓
Moer	✓
DNS	✓
Genomies	

HH 170026
PINNACLE OPAL
Oud. 7j | OEK 25m | TKP 363d
Kalwers 6 | Gespeen 6 | Spn. Mat. 125
Gem. SI 108 | KKG - | KKS 39.7

VV 970097
VALLEY-VENTURE 97 97
Spn Mat. 103

VV 980174
VALLEY-VENTURE 98 174
Oud. 7j | OEK 32m | TKP 495d
Kalwers 3 | Gespeen 3 | Spn. Mat. 93
Gem. SI 101 | Spn. Mat. 93

SP 140020 HH
SANTAPINE FIREMAN
Spn Mat. 123

HH 140038 HH
PINNACLE LAUREN
Oud. 10j | OEK 33m | TKP 367d
Kalwers 8 | Gespeen 8 | Spn. Mat. 99
Gem. SI 95 | Spn. Mat. 99

XY 890055
HENVIA THYS BRIGGS 21
AT 930030
RAFT 93 30
Oud. 9j | Gem. SI 96
Kalwers 5 | Gespeen 4
HM 910019
OKOMBAHE SHINER G9119
VV 960032
VALLEY-VENTURE 96 32
Oud. 5j | Gem. SI 118
Kalwers 2 | Gespeen 2
23
YARRAWONGA DICTATOR
SP 110048 HH
SANTAPINE CONNIE
Oud. 12j | Gem. SI 113
Kalwers 9 | Gespeen 7
KR02182
KR RICARDO 182/02
HH 080015
PINNACLE FIELA
Oud. 8j | Gem. SI 111
Kalwers 5 | Gespeen 3

KOEIWAARDE	124
94	Kalngemak Waarde
118	Kalngroei Waarde
107	Melk Waarde
84	Onderhoudswaarde
119	Vrugbaarheidswaarde
GROEI WAARDE	118
KARKAS WAARDE	120
PRODUKSIE WAARDE	123



Kalf en Moeder				Vrugbaarheid			
Geb. Dir.	Geb. Mat.	Spn. Dir.	Spn. Mat.	Skr. Omtr.	Vers Vrugb.	Koei Vrugb.	Lanklew.
98	90	118	107	113	115	121	100
54%	48%	71%	60%	34%	52%	35%	56%

Na-Speen Groei			Raam			Karkas		
Na-Speen	GDT	VOV	Volw. Gewig	Hoogte	Lengte	OSO	Vet	Mar
118	120	115	118	110	116	111	92	102
29%	30%	27%	26%	34%	32%	30%	27%	27%

Geb. Gewig	205D Gewig	365D Gewig	540D Gewig	GDT Indeks	VOV Indeks	Skrotum	LH
-	239kg 113 (12)	-	-	-	-	-	-

VERKOPER OPMERKINGS: Scrotal of 44cm.

LOT 26 (M)



HH 220003
PINNACLE HARVEY

BULL



Herd Book	SP
Birth date	2022-10-22
Age	2y 10m
Inbreeding	0%
DNA	ZOCA2025-87213

PINNACLE STUDS PTY LTD



Ladybrand, Free State
0824102401
pinnacle.santas@gmail.com

PO BOX 287, LADYBRAND, 9745



Myostatin	
Q204X	Free
NT821	Carrier
F94L	Free

COW VALUE 136

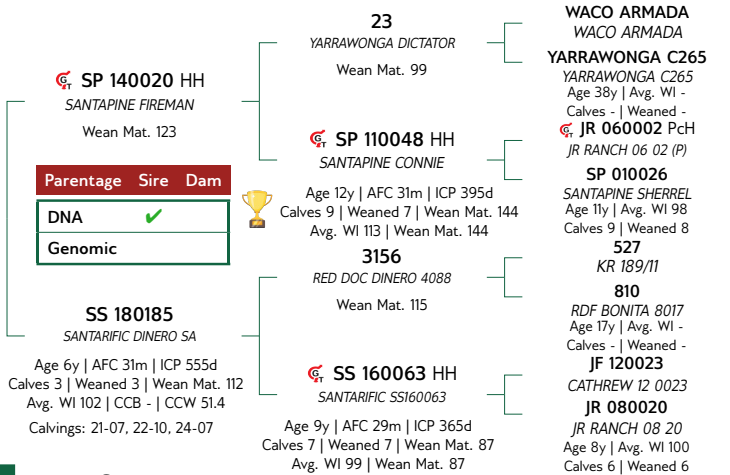
96	Calving Ease Value
114	Calf Growth Value
118	Milk Value
90	Maintenance Value
140	Fertility Value

GROWTH VALUE 115

CARCASS VALUE 119

PRODUCTION VALUE 133

Birth Weight	205D Weight	365D Weight	540D Weight	ADG Index	FCR Index	Scrotum	LH
-	226kg 88 (4)	-	-	-	-	-	-



EBV Analysis 2025-08-19

Calf and Mother				Fertility			
Birth Dir.	Birth Mat.	Wean Dir.	Wean Mat.	Scr. Circ.	Heifer Fert.	Cow Fert.	Longev.
98	98	114	118	120	132	140	104
57%	44%	71%	58%	39%	48%	30%	52%

Post-Wean Growth			Frame			Carcass		
Post Wean	ADG	FCR	Mature Weight	Height	Length	EMA	Fat	Mar
112	118	121	108	108	109	92	111	128
32%	33%	30%	36%	39%	37%	35%	32%	31%

SELLER REMARKS: Scrotal of 39cm.

LOT 27 (M)



SP 220016
SANTAPINE SP220016

BULL



Herd Book	SP
Birth date	2022-04-18
Age	3y 5m
Inbreeding	1%
DNA	ZOCA2025-87235

PINEKLOOF TRUST

Ladybrand, Free State
0824102401
pinnacle.santas@gmail.com

P.O. BOX 287, LADYBRAND, 9745



Myostatin	
Q204X	Free
NT821	Carrier
F94L	Free

COW VALUE 108

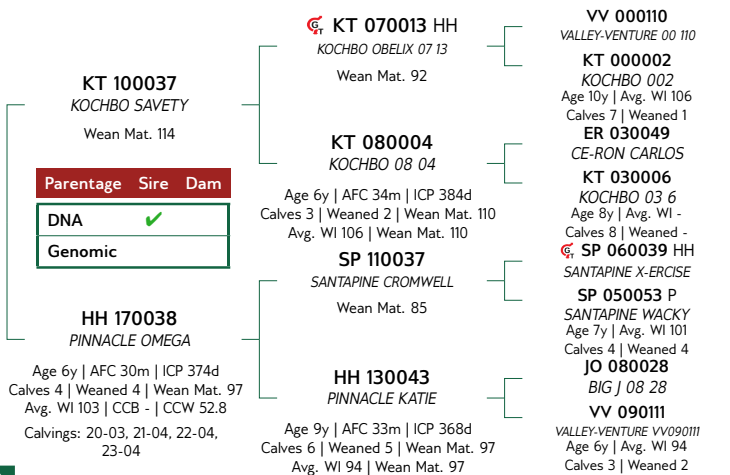
85	Calving Ease Value
118	Calf Growth Value
103	Milk Value
87	Maintenance Value
95	Fertility Value

GROWTH VALUE 117

CARCASS VALUE 118

PRODUCTION VALUE 109

Birth Weight	205D Weight	365D Weight	540D Weight	ADG Index	FCR Index	Scrotum	LH
-	252kg 109 (18)	-	-	-	-	-	-



EBV Analysis 2025-08-19

Calf and Mother				Fertility			
Birth Dir.	Birth Mat.	Wean Dir.	Wean Mat.	Scr. Circ.	Heifer Fert.	Cow Fert.	Longev.
88	97	118	103	101	106	87	94
52%	42%	67%	53%	32%	44%	28%	53%

Post-Wean Growth			Frame			Carcass		
Post Wean	ADG	FCR	Mature Weight	Height	Length	EMA	Fat	Mar
118	121	119	113	125	118	108	98	101
30%	28%	29%	25%	32%	31%	28%	26%	25%

SELLER REMARKS: Skrotum van 37cm.

LOT 28 (M)



SP 220125
SANTAPINE SP 220125

BUL



PINEKLOOF TRUST

Ladybrand, Free State
0824102401
pinnacle.santas@gmail.com

P.O. BOX 287, LADYBRAND, 9745

Kuddeboek	SP
Geb. dtm	2022-11-14
Oud.	2j 10m
Inteling	0%
DNS	ZOCA2025-87246

OLG 180018
OPLAAS GELUK CROWDER
Spn Mat. 93

Ouerskap	Vaar	Moer
DNS	✓	
Genomies		

SP 190084
SANTAPINE KAYLEIGH
Oud. 5j | OEK 36m | TKP 351d
Kalwers 3 | Gespeen 3 | Spn. Mat. 65
Gem. SI 93 | KKG - | KKS 32.8
Kalwings: 22-11, 23-10, 24-10

SP 080037 P
SANTAPINE ZAKUMI
Spn Mat. 88

LL 150218
LOCKLORE LL150218
Oud. 5j | OEK 35m | TKP 520d
Kalwers 2 | Gespeen 1 | Spn. Mat. 103
Gem. SI 105 | Spn. Mat. 103

HH 130001 HH
PINNACLE KEN
Spn Mat. 64

SP 130046 HH
SANTAPINE EMPRESS
Oud. 10j | OEK 37m | TKP 363d
Kalwers 6 | Gespeen 5 | Spn. Mat. 78
Gem. SI 98 | Spn. Mat. 78

CVF02022
BRIGGS MR CVF 2022
SP 050046 P
SANTAPINE WAFER
Oud. 3j | Gem. SI 88
Kalwers 1 | Gespeen 1
LL 120021 P
LOCKLORE LL120021
LL 120247
LOCKLORE LL120247
Oud. 12j | Gem. SI 105
Kalwers 9 | Gespeen 8
JO 080028
BIG J 08 28
TOL 060006 HH
TOLNEL 06 06
Oud. 14j | Gem. SI 99
Kalwers 11 | Gespeen 8
DJW 080041
CONSORT 08 41
SP 080066
SANTAPINE ZANETTE
Oud. 11j | Gem. SI 98
Kalwers 9 | Gespeen 8

KOEIWAARDE 98

87	Kalfgemak Waarde
118	Kalfgroei Waarde
76	Melk Waarde
95	Onderhoudswaarde
93	Vrugbaarheidswaarde

GROEI WAARDE 112

KARKAS WAARDE 112
PRODUKSIE WAARDE 99



Kalf en Moeder				Vrugbaarheid			
Geb. Dir.	Geb. Mat.	Spn. Dir.	Spn. Mat.	Skr. Omtr.	Vers Vrugb.	Koei Vrugb.	Lanklew.
83	109	118	76	90	89	96	102
42%	31%	65%	45%	40%	34%	24%	44%

Na-Speen Groei			Raam			Karkas		
Na-Speen	GDT	VOV	Volw. Gewig	Hoogte	Lengte	OSO	Vet	Mar
115	114	107	107	112	116	108	118	105
26%	34%	38%	24%	41%	39%	35%	31%	30%

Geb. Gewig	205D Gewig	365D Gewig	540D Gewig	GDT Indeks	VOV Indeks	Skrotum	LH
-	242kg 117 (23)	-	-	-	-	-	-



Miostatien	
Q204X	Skoon
NT821	Draer
F94L	Skoon

VERKOPER OPMERKINGS: Skrotum van 38cm.

LOT 29 (M)



FR 220102
SANBACH URITH

BUL



SANBACH TRUST

Excelsior, Free State
0827752408
jorinarautenbach@gmail.com

PLAAS LINANA 1303, EXCELSIOR, 9760

Kuddeboek	SP
Geb. dtm	2022-10-20
Oud.	2j 10m
Inteling	1%
DNS	ZOCA2025-86311

KT 180005 HH
KOCHBO ALADIN
Spn Mat. 83

Ouerskap	Vaar	Moer
DNS	✓	
Genomies		

FR 130044
SANBACH EVELYN
Oud. 11j | OEK 37m | TKP 395d
Kalwers 9 | Gespeen 6 | Spn. Mat. 86
Gem. SI 101 | KKG - | KKS -
Kalwings: 16-10, 17-09, 18-11, 19-11, 20-11, 21-11, 22-10, 24-05, 25-06

KT 140015
KOCHBO WACO
Spn Mat. 84

KT 100025
KOCHBO KT100025
Oud. 11j | OEK 28m | TKP 370d
Kalwers 8 | Gespeen 5 | Spn. Mat. 96
Gem. SI 106 | Spn. Mat. 96

SP 080078
SANTAPINE ZADOC
Spn Mat. 76

FR 060213
SANBACH 06 213
Oud. 15j | OEK - | TKP 333d
Kalwers 14 | Gespeen 6 | Spn. Mat. 76
Gem. SI 86 | Spn. Mat. 76

A552
YARROWONGA TROOPER
KT 070011
KOCHBO 07 11
Oud. 10j | Gem. SI 105
Kalwers 6 | Gespeen 4
VV 040074
VALLEY-VENTURE 04 74
KT 070008
KOCHBO SHOWGIRL 07 08
Oud. 6j | Gem. SI 100
Kalwers 3 | Gespeen 3
SP 030025
SANTAPINE ULTIMATE
HBF 050005
WINFIELD GORGEOUS
Oud. 5j | Gem. SI 97
Kalwers 3 | Gespeen 3
VV 010035
VALLEY-VENTURE 01 35

KOEIWAARDE 105

90	Kalfgemak Waarde
120	Kalfgroei Waarde
83	Melk Waarde
88	Onderhoudswaarde
96	Vrugbaarheidswaarde

GROEI WAARDE 110

KARKAS WAARDE 115
PRODUKSIE WAARDE 105



Kalf en Moeder				Vrugbaarheid			
Geb. Dir.	Geb. Mat.	Spn. Dir.	Spn. Mat.	Skr. Omtr.	Vers Vrugb.	Koei Vrugb.	Lanklew.
89	111	120	83	110	88	103	104
41%	31%	70%	49%	23%	40%	23%	47%

Na-Speen Groei			Raam			Karkas		
Na-Speen	GDT	VOV	Volw. Gewig	Hoogte	Lengte	OSO	Vet	Mar
113	113	110	115	111	115	112	100	110
20%	21%	17%	11%	23%	22%	12%	11%	11%

Geb. Gewig	205D Gewig	365D Gewig	540D Gewig	GDT Indeks	VOV Indeks	Skrotum	LH
-	260kg 110 (24)	-	-	-	-	-	-



Miostatien	
Q204X	Skoon
NT821	Skoon
F94L	Skoon

VERKOPER OPMERKINGS: Bul met goeie lengte. Skrotum van 43,5cm.

LOT 30 (F)



SP 220104 P
SANTAPINE SP220104

PREGNANT HEIFER



PINEKLOOF TRUST

Ladybrand, Free State
0824102401
pinnacle.santas@gmail.com

P.O. BOX 287, LADYBRAND, 9745



Myostatin	
Q204X	Not Tested
NT821	Not Tested
F94L	Not Tested

Herd Book	SP
Birth date	2022-10-08
Age	2y 11m
Inbreeding	0%

SP 080037 P
SANTAPINE ZAKUMI
Wean Mat. 88

Parentage	Sire	Dam
DNA		
Genomic		

SP 170064
SANTAPINE ICE

Age 7y | AFC 30m | ICP 433d
Calves 5 | Weaned 4 | Wean Mat. 111
Avg. WI 104 | CCB - | CCW 33.4

Calvings: 20-03, 21-09, 22-10,
23-11, 24-12

CVF02022
BRIGGS MR CVF 2022
Wean Mat. 94

SP 050046 P
SANTAPINE WAFER
Age 3y | AFC 39m | ICP -
Calves 1 | Weaned 1 | Wean Mat. 80
Avg. WI 88 | Wean Mat. 80

SP 980033
SANTAPINE PRESIDENT
Wean Mat. 101

SP 140075 HH
SANTAPINE FRISKY

Age 10y | AFC 33m | ICP 373d
Calves 8 | Weaned 5 | Wean Mat. 120
Avg. WI 107 | Wean Mat. 120

3983
YP GERONIMO 3983
003/99
BIGGS 003/99
Age 26y | Avg. WI -
Calves 1 | Weaned -
HBF 010042
WHITE HORN SIMBA
SP 990073 P
SANTAPINE QUOTIENT
Age 10y | Avg. WI 95
Calves 7 | Weaned 6
ROB270
ROBENLEA QUEENSLANDER (ET)
MB 850003
SANPALA MB 03 85
Age 16y | Avg. WI 92
Calves 12 | Weaned 7
JF 100077
CATHREW 10 0077
SP 030061
SANTAPINE URANIA 03 61
Age 14y | Avg. WI 103
Calves 11 | Weaned 10

COW VALUE 93

88	Calving Ease Value
107	Calf Growth Value
98	Milk Value
102	Maintenance Value
83	Fertility Value

GROWTH VALUE 105

CARCASS VALUE 104

PRODUCTION VALUE 93



EBV Analysis 2025-08-19

Calf and Mother				Fertility			
Birth Dir.	Birth Mat.	Wean Dir.	Wean Mat.	Scr. Circ.	Heifer Fert.	Cow Fert.	Longev.
88	108	107	98	98	89	83	94
54%	47%	69%	56%	41%	52%	33%	58%

Post-Wean Growth			Frame			Carcass		
Post Wean	ADG	FCR	Mature Weight	Height	Length	EMA	Fat	Mar
105	103	102	97	108	110	97	104	102
36%	37%	37%	25%	41%	40%	32%	29%	27%

Birth Weight	205D Weight	365D Weight	540D Weight	ADG Index	FCR Index	Scrotum	LH
-	210kg 107 (28)	-	-	-	-	-	-

SELLER REMARKS: Feminine polled heifer. Heavy in calf to FR 21-70.

LOT 31 (F)



SP 230078 P
SANTAPINE SP 230078

PREGNANT HEIFER



PINEKLOOF TRUST

Ladybrand, Free State
0824102401
pinnacle.santas@gmail.com

P.O. BOX 287, LADYBRAND, 9745



Myostatin	
Q204X	Not Tested
NT821	Not Tested
F94L	Not Tested

Herd Book	SP
Birth date	2023-09-17
Age	1y 12m
Inbreeding	0%

HH 170045 HH
PINNACLE OUTPOST
Wean Mat. 89

Parentage	Sire	Dam
DNA		
Genomic		

FR 200077
SANBACH OTYLIA

Age 5y | AFC 37m | ICP 409d
Calves 2 | Weaned 2 | Wean Mat. 98
Avg. WI 94 | CCB - | CCW -

Calvings: 23-09, 24-10

LL 120206 HH
LOCKLORE LL120206
Wean Mat. 99

HH 130031
PINNACLE KONTIKI
Age 5y | AFC 35m | ICP 393d
Calves 2 | Weaned 2 | Wean Mat. 75
Avg. WI 99 | Wean Mat. 75

SP 160036 HH
SANTAPINE HELSINKI
Wean Mat. 105

FR 140003
SANBACH FRAAI
Age 9y | AFC 38m | ICP 394d
Calves 6 | Weaned 4 | Wean Mat. 106
Avg. WI 113 | Wean Mat. 106

LL 090075
LOCKLORE LL090075
GR 050047
GANADO ROJO 05 47
Age 18y | Avg. WI 104
Calves 12 | Weaned 10
DJW 080041
CONSORT 08 41
K 070054
KORINGLAND 07 54
Age 9y | Avg. WI 89
Calves 6 | Weaned 5
SP 110037
SANTAPINE CROMWELL
SP 110081 HH
SANTAPINE CUCKOO
Age 13y | Avg. WI 115
Calves 11 | Weaned 9
JR 060002 Pch
JR RANCH 06 02 (P)
FR 110046
SANBACH CIDER
Age 13y | Avg. WI 93
Calves 9 | Weaned 4

COW VALUE 97

99	Calving Ease Value
103	Calf Growth Value
96	Milk Value
94	Maintenance Value
96	Fertility Value

GROWTH VALUE 98

CARCASS VALUE 98

PRODUCTION VALUE 95



EBV Analysis 2025-08-19

Calf and Mother				Fertility			
Birth Dir.	Birth Mat.	Wean Dir.	Wean Mat.	Scr. Circ.	Heifer Fert.	Cow Fert.	Longev.
99	102	103	96	89	95	101	96
43%	27%	71%	51%	24%	48%	23%	49%

Post-Wean Growth			Frame			Carcass		
Post Wean	ADG	FCR	Mature Weight	Height	Length	EMA	Fat	Mar
103	101	102	106	98	101	94	99	102
24%	21%	18%	28%	23%	22%	18%	17%	16%

Birth Weight	205D Weight	365D Weight	540D Weight	ADG Index	FCR Index	Scrotum	LH
-	202kg 85 (10)	-	-	-	-	-	-

SELLER REMARKS: Polled heifer with good capacity. 8 months in calf to SP 18-45.

LOT 32 (F)



KOEI MET KALF



SANBACH TRUST

Excelsior, Free State
0827752408
jorinarautenbach@gmail.com

PLAAS LINANA 1303, EXCELSIOR, 9760

Laaste Kalf	
Kalf ID	FR 250054 (F)
Geb. datum	2025-07-24
Vaar ID	SP 210012

Kalwings: 25-07



Miostatien

Q204X	Nie Getoets
NT821	Nie Getoets
F94L	Nie Getoets

FR 220125
SANBACH VARDA

Kuddeboek	SP
Geb. dtm	2022-12-12
Oud.	2j 9m
Inteling	1%
OEK	31m
Kalwers	1
Gespeen	0
Gem. SI	-
TKP	-

KOEIWAARDE 113

83	Kalfgemak Waarde
127	Kalfgroei Waarde
117	Melk Waarde
79	Onderhoudswaarde
78	Vrugbaarheidswaarde

GROEI WAARDE 131

KARKAS WAARDE 134

PRODUKSIE WAARDE 117

Geb. Gewig	205D Gewig	365D Gewig	540D Gewig	GDT Indeks	VOV Indeks	Skrotum	LH
-	243kg 131 (14)	-	-	-	-	-	-

KT 180005 HH
KOCHBO ALADIN
Spn Mat. 83

Ouerskap	Vaar	Moer
DNS		
Genomies		

FR 160039
SANBACH HENNA

Oud. 9j | OEK 28m | TKP 436d
Kalwers 6 | Gespeen 6 | Spn. Mat. 151
Gem. SI 115 | KKG - | KKS -

Kalwings: 19-01, 20-09, 21-10,
22-12, 23-12, 25-01

KT 140015
KOCHBO WACO
Spn Mat. 84

KT 100025
KOCHBO KT100025

Oud. 11j | OEK 28m | TKP 370d
Kalwers 8 | Gespeen 5 | Spn. Mat. 96
Gem. SI 106 | Spn. Mat. 96

JO 080028
BIG J 08 28

Spn Mat. 106

FR 120044
SANBACH DOLLEEN

Oud. 6j | OEK 31m | TKP 489d
Kalwers 2 | Gespeen 2 | Spn. Mat. 151
Gem. SI 118 | Spn. Mat. 151

A552
YARRAWONGA TROOPER

KT 070011
KOCHBO 07 11

Oud. 10j | Gem. SI 105
Kalwers 6 | Gespeen 4
VV 040074
VALLEY-VENTURE 04 74

KT 070008

KOCHBO SHOWGIRL 07 08
Oud. 6j | Gem. SI 100
Kalwers 3 | Gespeen 3

JO 010138
BIG J BARON 01 138

JO 020086
BIG J 02 86

Oud. 11j | Gem. SI -
Kalwers 5 | Gespeen -
FR 090034
SANBACH ALI

SS 090015
SAAMSPEEL MISS PARTNER
Oud. 9j | Gem. SI 118
Kalwers 7 | Gespeen 3



Kalf en Moeder				Vrugbaarheid			
Geb. Dir.	Geb. Mat.	Spn. Dir.	Spn. Mat.	Skr. Omtr.	Vers Vrugb.	Koei Vrugb.	Lanklew.
75	98	127	117	124	72	86	105
43%	33%	70%	49%	24%	41%	25%	47%

Na-Speen Groei			Raam			Karkas		
Na-Speen	GDT	VOV	Volw. Gewig	Hoogte	Lengte	OSO	Vet	Mar
121	134	120	123	139	140	134	93	107
20%	22%	19%	14%	24%	23%	17%	15%	15%

VERKOPER OPMERKINGS: Vers met goeie vroulikheid en wig. Word verkoop met verskalf (FR 25-54) van poena bul SP 21-12.

LOT 33 (F)



DRAGTIGE VERS



SANTAMÉ STOET

Reddersburg, Free State
0823723012
anneme.venter@gmail.com

H/A LIEFDEFONTEIN BOERDERY, 25
BERGHLAAN, DALSIG, STELLENBOSCH, 7600



Miostatien

Q204X	Nie Getoets
NT821	Nie Getoets
F94L	Nie Getoets

WP 220028 P
SANT-A-MÉ BIBI WP220028

Kuddeboek	SP
Geb. dtm	2022-10-01
Oud.	2j 11m
Inteling	0%

KOEIWAARDE 99

92	Kalfgemak Waarde
92	Kalfgroei Waarde
123	Melk Waarde
113	Onderhoudswaarde
100	Vrugbaarheidswaarde

GROEI WAARDE 95

KARKAS WAARDE 86

PRODUKSIE WAARDE 96

Geb. Gewig	205D Gewig	365D Gewig	540D Gewig	GDT Indeks	VOV Indeks	Skrotum	LH
39kg	241kg 97 (13)	276kg 89 (10)	393kg 115 (10)	-	-	- (B2)	-

SP 150090 HH
SANTAPINE GRANITE
Spn Mat. 106

Ouerskap	Vaar	Moer
DNS		
Genomies		

WP 180027 P
SANT-A-MÉ 18-027

Oud. 6j | OEK 35m | TKP 383d
Kalwers 4 | Gespeen 4 | Spn. Mat. 137
Gem. SI 103 | KKG 7.33 | KKS 44.8

Kalwings: 21-10, 22-10, 23-09,
24-12

SP 110037
SANTAPINE CROMWELL
Spn Mat. 85

SP 070008
SANTAPINE YOLANDE

Oud. 13j | OEK 31m | TKP 388d
Kalwers 11 | Gespeen 9 | Spn. Mat. 107
Gem. SI 103 | Spn. Mat. 107

WP 150004 P
SANT-A-MÉ WP15004

Spn Mat. 97

WP 130028 P
SANT-A-MÉ 13 28

Oud. 10j | OEK 29m | TKP 347d
Kalwers 9 | Gespeen 6 | Spn. Mat. 131
Gem. SI 107 | Spn. Mat. 131

SP 060039 HH
SANTAPINE X-ERCISE

SP 050053 P
SANTAPINE WACKY

Oud. 7j | Gem. SI 101
Kalwers 4 | Gespeen 4
J 020018
JADUP 02 18

SP 000041
SANTAPINE ROSETTA

Oud. 11j | Gem. SI 96
Kalwers 7 | Gespeen 5
SU 080003
SURVIVOR 08 03

WP 080202 P
SANT-A-MÉ 08 202

Oud. 8j | Gem. SI -
Kalwers 5 | Gespeen -
*MS

MULTIPLE *SIRE
WP 080038

SANT-A-MÉ 08 38
Oud. 8j | Gem. SI -
Kalwers 5 | Gespeen -



Kalf en Moeder				Vrugbaarheid			
Geb. Dir.	Geb. Mat.	Spn. Dir.	Spn. Mat.	Skr. Omtr.	Vers Vrugb.	Koei Vrugb.	Lanklew.
92	105	92	123	113	100	103	97
71%	44%	68%	53%	43%	39%	23%	50%

Na-Speen Groei			Raam			Karkas		
Na-Speen	GDT	VOV	Volw. Gewig	Hoogte	Lengte	OSO	Vet	Mar
87	92	86	84	101	94	95	94	99
62%	39%	22%	29%	44%	42%	36%	34%	33%

VERKOPER OPMERKINGS: Swaar dragtige poena vers. Het by WP 22-49 en WP 21-34 geloop.

LOT 34 (F)

PREGNANT HEIFER



HH 230001
PINNACLE IVY



Herd Book	SP
Birth date	2023-09-27
Age	1y 11m
Inbreeding	1%

PINNACLE STUDS PTY LTD



Ladybrand, Free State
0824102401
pinnacle.santas@gmail.com

PO BOX 287,,LADYBRAND, 9745

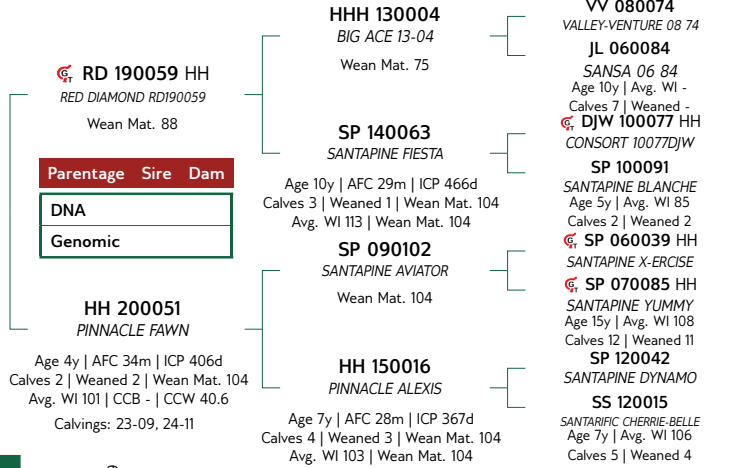


Myostatin	
Q204X	Not Tested
NT821	Not Tested
F94L	Not Tested

COW VALUE 95	
92	Calving Ease Value
109	Calf Growth Value
96	Milk Value
93	Maintenance Value
85	Fertility Value
GROWTH VALUE 114	
CARCASS VALUE 108	
PRODUCTION VALUE 97	

Birth Weight	205D Weight	365D Weight	540D Weight	ADG Index	FCR Index	Scrotum	LH
-	231kg 101 (2)	-	-	-	-	-	-

SELLER REMARKS: Heifer with a lot of potential. 7 months in calf to polled bull SP 23-10.



Calf and Mother				Fertility			
Birth Dir.	Birth Mat.	Wean Dir.	Wean Mat.	Scr. Circ.	Heifer Fert.	Cow Fert.	Longev.
92	103	109	96	106	85	90	96
45%	28%	68%	38%	27%	29%	18%	41%

Post-Wean Growth			Frame			Carcass		
Post Wean	ADG	FCR	Mature Weight	Height	Length	EMA	Fat	Mar
112	114	110	107	104	107	104	101	99
20%	24%	18%	19%	27%	26%	18%	16%	16%

LOT 35 (F)

PREGNANT HEIFER



SP 230026 P
SANTAPINE SP 230026



Herd Book	SP
Birth date	2023-04-03
Age	2y 5m
Inbreeding	0%

PINEKLOOF TRUST

Ladybrand, Free State
0824102401
pinnacle.santas@gmail.com

P.O. BOX 287,,LADYBRAND, 9745

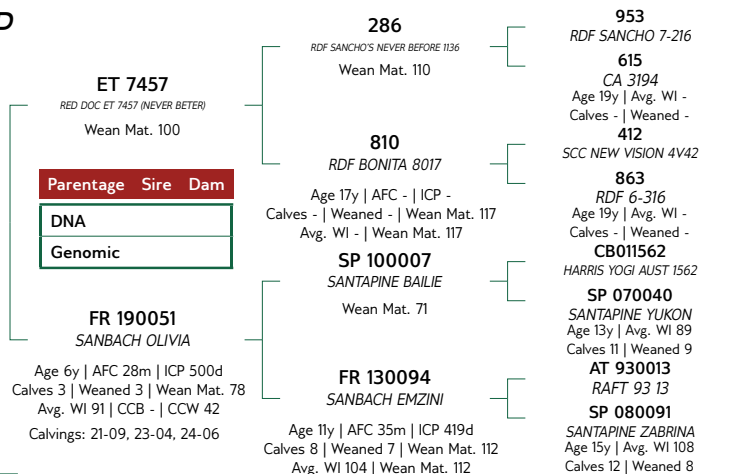


Myostatin	
Q204X	Not Tested
NT821	Not Tested
F94L	Not Tested

COW VALUE 109	
91	Calving Ease Value
120	Calf Growth Value
89	Milk Value
96	Maintenance Value
95	Fertility Value
GROWTH VALUE -	
CARCASS VALUE 116	
PRODUCTION VALUE -	

Birth Weight	205D Weight	365D Weight	540D Weight	ADG Index	FCR Index	Scrotum	LH
-	218kg 95 (11)	-	-	-	-	-	-

SELLER REMARKS: Polled feminine heifer. 8 months in calf to polled bull SP 22-58 (Lot 4).



Calf and Mother				Fertility			
Birth Dir.	Birth Mat.	Wean Dir.	Wean Mat.	Scr. Circ.	Heifer Fert.	Cow Fert.	Longev.
93	97	120	89	112	92	107	89
43%	22%	68%	43%	18%	39%	22%	45%

Post-Wean Growth			Frame			Carcass		
Post Wean	ADG	FCR	Mature Weight	Height	Length	EMA	Fat	Mar
117	114	106	104	115	112	111	119	108
16%	16%	16%	23%	21%	18%	18%	16%	16%

LOT 36 (F)



KOEI MET KALF



FR 220134
SANBACH VARIEL

Kuddeboek	SP
Geb. dtm	2022-12-22
Oud.	2j 8m
Inteling	1%
OEK	31m
Kalwers	1
Gespeen	0
Gem. SI	-
TKP	-

SANBACH TRUST

Excelsior, Free State
0827752408
jorinarautenbach@gmail.com

PLAAS LINANA 1303, EXCELSIOR, 9760

Laaste Kalf	
Kalf ID	FR 250055 (F)
Geb. datum	2025-07-25
Vaar ID	SP 210012

Kalwings: 25-07



Miostatien

Q204X	Nie Getoets
NT821	Nie Getoets
F94L	Nie Getoets

KOEIWAARDE 92

103	Kalfgemak Waarde
99	Kalfgroei Waarde
89	Melk Waarde
112	Onderhoudswaarde
90	Vrugbaarheidswaarde

GROEI WAARDE 93

KARKAS WAARDE 85

PRODUKSIE WAARDE 89

Geb. Gewig	205D Gewig	365D Gewig	540D Gewig	GDT Indeks	VOV Indeks	Skrotum	LH
-	166kg 83 (14)	-	-	-	-	-	-

FR 170061 HH
SANBACH KAYDEN
Spn Mat. 95

Ouerskap	Vaar	Moer
DNS		
Genomies		

FR 200006
SANBACH OLIVIA

Oud. 5j | OEK 35m | TKP -
Kalwers 1 | Gespeen 1 | Spn. Mat. 81
Gem. SI 83 | KKG - | KKS -
Kalwings: 22-12

SP 110076
SANTAPINE CABANA
Spn Mat. 76

FR 120081 P
SANBACH DENO

Oud. 12j | OEK 26m | TKP 433d
Kalwers 8 | Gespeen 8 | Spn. Mat. 98
Gem. SI 95 | Spn. Mat. 98

JH 120035 HH
SANTARUST 12 35
Spn Mat. 74

FR 170064
SANBACH KIARA

Oud. 6j | OEK 29m | TKP 463d
Kalwers 3 | Gespeen 2 | Spn. Mat. 97
Gem. SI 103 | Spn. Mat. 97

KT 080007
KOCHBO PAPPARAZZI

SP 060099
SANTAPINE X-TENT
Oud. 9j | Gem. SI 107
Kalwers 5 | Gespeen 5

ER 000015
CE-RON RAFT 15

FR 090016
SANBACH ASTER
Oud. 14j | Gem. SI 97
Kalwers 9 | Gespeen 5

DT 060316
RENSBOU MNR PERFEK 06 316

ER 030059
CE-RON CANDY
Oud. 14j | Gem. SI 96
Kalwers 8 | Gespeen 3

JO 080028
BIG J 08 28

HH 080018
PINNACLE FLAME
Oud. 14j | Gem. SI 99
Kalwers 10 | Gespeen 7



EBV Analise 2025-08-19

Kalf en Moeder				Vrugbaarheid			
Geb. Dir.	Geb. Mat.	Spn. Dir.	Spn. Mat.	Skr. Omtr.	Vers Vrugb.	Koei Vrugb.	Lanklew.
101	106	99	89	82	91	89	103
35%	31%	68%	48%	33%	44%	25%	50%

Na-Speen Groei			Raam			Karkas		
Na-Speen	GDT	VOV	Volw. Gewig	Hoogte	Lengte	OSO	Vet	Mar
99	94	93	87	77	87	88	71	86
27%	30%	26%	18%	34%	32%	28%	27%	26%

VERKOPER OPMERKINGS: Kort dik koei. Word verkoop met verskalf (FR 25-55) van poena bul SP 21-12.

LOT 37 (F)



DRAGTIGE VERS



WP 220043 P
SANT-A-MÉ TRINKET WP220043

Kuddeboek	SP
Geb. dtm	2022-11-27
Oud.	2j 9m
Inteling	0%

SANTAMÉ STOET

Reddersburg, Free State
0823723012
anneme.venter@gmail.com

H/A LIEFDEFONTEIN BOERDERY, 25
BERGHLAAN, DALSIG, STELLENBOSCH, 7600



Miostatien

Q204X	Nie Getoets
NT821	Nie Getoets
F94L	Nie Getoets

KOEIWAARDE 109

111	Kalfgemak Waarde
103	Kalfgroei Waarde
92	Melk Waarde
102	Onderhoudswaarde
111	Vrugbaarheidswaarde

GROEI WAARDE 104

KARKAS WAARDE 109

PRODUKSIE WAARDE 107

Geb. Gewig	205D Gewig	365D Gewig	540D Gewig	GDT Indeks	VOV Indeks	Skrotum	LH
36kg	213kg 103 (6)	255kg 99 (5)	-	-	-	- (B1)	-

LL 160183 HH
LOCKLORE LL160183
Spn Mat. 100

Ouerskap	Vaar	Moer
DNS		
Genomies		

WP 180024
SANT-A-MÉ 18-024

Oud. 5j | OEK 25m | TKP 352d
Kalwers 4 | Gespeen 3 | Spn. Mat. 87
Gem. SI 96 | KKG 6.47 | KKS -
Kalwings: 20-12, 21-11, 22-11, 23-10

LL 110148 P
LOCKLORE LL110148
Spn Mat. 100

LL 070056
LOCKLORE 07 56

Oud. 15j | OEK 29m | TKP 400d
Kalwers 12 | Gespeen 10 | Spn. Mat. 101
Gem. SI 103 | Spn. Mat. 101

WP 150004 P
SANT-A-MÉ WP15004
Spn Mat. 97

WP 130045 P
SANT-A-MÉ 13 45

Oud. 6j | OEK - | TKP 365d
Kalwers 3 | Gespeen 2 | Spn. Mat. 108
Gem. SI 108 | Spn. Mat. 108

LL 080057
LOCKLORE 08 57

LL 070057
LOCKLORE 07 57
Oud. 13j | Gem. SI 102
Kalwers 10 | Gespeen 9

LL 030074
LOCKLORE 03 74

GR 050077
GANADO ROJO 05 77
Oud. 5j | Gem. SI 92
Kalwers 3 | Gespeen 3

SU 080003
SURVIVOR 08 03

WP 080202 P
SANT-A-MÉ 08 202
Oud. 8j | Gem. SI -
Kalwers 5 | Gespeen -



EBV Analise 2025-08-19

Kalf en Moeder				Vrugbaarheid			
Geb. Dir.	Geb. Mat.	Spn. Dir.	Spn. Mat.	Skr. Omtr.	Vers Vrugb.	Koei Vrugb.	Lanklew.
111	98	103	92	117	111	113	94
71%	38%	67%	48%	48%	39%	20%	48%

Na-Speen Groei			Raam			Karkas		
Na-Speen	GDT	VOV	Volw. Gewig	Hoogte	Lengte	OSO	Vet	Mar
102	108	94	97	124	116	130	110	123
51%	43%	8%	18%	48%	47%	41%	37%	37%

VERKOPER OPMERKINGS: Swaar dragtige poena vers. Het by WP 22-49 en WP 21-34 geloop.

LOT 38 (F)



SP 230017
SANTAPINE SP 230017

PREGNANT HEIFER



PINEKLOOF TRUST

Ladybrand, Free State
0824102401
pinnacle.santas@gmail.com

P.O. BOX 287, LADYBRAND, 9745



Myostatin	
Q204X	Not Tested
NT821	Not Tested
F94L	Not Tested

Herd Book	SP
Birth date	2023-03-19
Age	2y 6m
Inbreeding	3%

RD 170020 HH
RED DIAMOND APOLLO
Wean Mat. 99

Parentage	Sire	Dam
DNA		
Genomic		

FR 200071
SANBACH ORLENA
Age 3y | AFC 31m | ICP -
Calves 1 | Weaned 1 | Wean Mat. 111
Avg. WI 110 | CCB - | CCW -
Calvings: 23-03

VV 120052 HH
VALLEY-VENTURE VV120052
Wean Mat. 101

SP 140029
SANTAPINE FLICK
Age 11y | AFC 37m | ICP 381d
Calves 8 | Weaned 3 | Wean Mat. 102
Avg. WI 105 | Wean Mat. 102

SP 160036 HH
SANTAPINE HELSINKI
Wean Mat. 105

FR 140039
SANBACH FANTISI
Age 11y | AFC 28m | ICP 418d
Calves 8 | Weaned 6 | Wean Mat. 105
Avg. WI 100 | Wean Mat. 105

VV 020194 HH
VALLEY-VENTURE CHAMP 02 194

VV 010143
VALLEY-VENTURE 01 143
Age 14y | Avg. WI 101
Calves 10 | Weaned 9

HH 110024
PINNACLE ICEMAN

SP 090033 P
SANTAPINE AHOY
Age 7y | Avg. WI 105
Calves 4 | Weaned 4

SP 110037
SANTAPINE CROMWELL

SP 110081 HH
SANTAPINE CUCKOO
Age 13y | Avg. WI 115
Calves 11 | Weaned 9

JR 060002 Pch
JR RANCH 06 02 (P)
FR 110043
SANBACH CHAMEL
Age 12y | Avg. WI 96
Calves 8 | Weaned 5

COW VALUE 117

83	Calving Ease Value
122	Calf Growth Value
104	Milk Value
80	Maintenance Value
109	Fertility Value

GROWTH VALUE 121

CARCASS VALUE 125

PRODUCTION VALUE 118



EBV Analysis 2025-08-19

Calf and Mother				Fertility			
Birth Dir.	Birth Mat.	Wean Dir.	Wean Mat.	Scr. Circ.	Heifer Fert.	Cow Fert.	Longev.
86	99	122	104	113	103	113	102
46%	33%	70%	46%	28%	41%	23%	46%

Post-Wean Growth			Frame			Carcass		
Post Wean	ADG	FCR	Mature Weight	Height	Length	EMA	Fat	Mar
121	126	121	123	121	121	118	109	107
24%	25%	19%	16%	28%	27%	22%	20%	20%

Birth Weight	205D Weight	365D Weight	540D Weight	ADG Index	FCR Index	Scrotum	LH
-	250kg 110 (9)	-	-	-	-	-	-

SELLER REMARKS: Long bodied heifer. 7.5 months in calf to polled bull SP 22-58 (Lot 4)

LOT 39 (F)



SP 230071
SANTAPINE SP 230071

PREGNANT HEIFER



PINEKLOOF TRUST

Ladybrand, Free State
0824102401
pinnacle.santas@gmail.com

P.O. BOX 287, LADYBRAND, 9745



Myostatin	
Q204X	Not Tested
NT821	Not Tested
F94L	Not Tested

Herd Book	SP
Birth date	2023-09-09
Age	1y 12m
Inbreeding	0%

HH 160018 HH
PINNACLE NIKE
Wean Mat. 86

Parentage	Sire	Dam
DNA		
Genomic		

HH 180035 HH
PINNACLE PINNAQUIN
Age 6y | AFC 29m | ICP 427d
Calves 4 | Weaned 4 | Wean Mat. 140
Avg. WI 109 | CCB - | CCW 43.8
Calvings: 21-04, 22-05, 23-09, 24-10

HH 130015
PINNACLE KNIGHT
Wean Mat. 81

HH 110020
PINNACLE INGA
Age 10y | AFC 27m | ICP 455d
Calves 7 | Weaned 5 | Wean Mat. 74
Avg. WI 94 | Wean Mat. 74

JH 140070
SANTARUST 1470
Wean Mat. 151

HH 090008
PINNACLE GLORIA
Age 12y | AFC 34m | ICP 385d
Calves 9 | Weaned 7 | Wean Mat. 106
Avg. WI 106 | Wean Mat. 106

DJW 080041
CONSORT 08 41

HH 060005
PINNACLE DIANA
Age 8y | Avg. WI 107
Calves 5 | Weaned 2

SP 060039 HH
SANTAPINE X-ERCISE
JL 060354
SANSA 06 354
Age 10y | Avg. WI 94
Calves 8 | Weaned 8

KVS 080229
KLEYNHANSVELDE 08 229

JH 100097 HH
SANTARUST 10 97
Age 12y | Avg. WI 118
Calves 9 | Weaned 8

ER 000015
CE-RON RAFT 15

DT 040332
RENSBOU 04 332
Age 9y | Avg. WI 99
Calves 6 | Weaned 4

COW VALUE 117

85	Calving Ease Value
131	Calf Growth Value
109	Milk Value
74	Maintenance Value
84	Fertility Value

GROWTH VALUE 128

CARCASS VALUE 132

PRODUCTION VALUE 119



EBV Analysis 2025-08-19

Calf and Mother				Fertility			
Birth Dir.	Birth Mat.	Wean Dir.	Wean Mat.	Scr. Circ.	Heifer Fert.	Cow Fert.	Longev.
72	104	131	109	107	81	90	100
33%	27%	69%	49%	31%	41%	25%	46%

Post-Wean Growth			Frame			Carcass		
Post Wean	ADG	FCR	Mature Weight	Height	Length	EMA	Fat	Mar
128	129	122	131	122	132	130	98	103
26%	28%	26%	22%	31%	30%	26%	24%	23%

Birth Weight	205D Weight	365D Weight	540D Weight	ADG Index	FCR Index	Scrotum	LH
-	241kg 117 (16)	-	-	-	-	-	-

SELLER REMARKS: 7 months in calf to polled bull HH 19-14.

LOT 40 (F)



KOEI MET KALF



SANBACH TRUST

Excelsior, Free State
0827752408
jorinarautenbach@gmail.com

PLAAS LINANA 1303, EXCELSIOR, 9760

Laaste Kalf	
Kalf ID	FR 250056 (F)
Geb. datum	2025-07-26
Vaar ID	SP 210012

Kalwings: 25-07



Miostatien

Q204X	Nie Getoets
NT821	Nie Getoets
F94L	Nie Getoets

FR 220131
SANBACH VALONIA

Kuddeboek	SP
Geb. dtm	2022-12-20
Oud.	2j 9m
Inteling	0%
OEK	31m
Kalwers	1
Gespeen	0
Gem. SI	-
TKP	-

KT 180005 HH
KOCHBO ALADIN
Spn Mat. 83

Ouerskap	Vaar	Moer
DNS		
Genomies		

FR 170005
SANBACH IRMA

Oud. 8j | OEK 32m | TKP 442d
Kalwers 5 | Gespeen 5 | Spn. Mat. 69
Gem. SI 93 | KKG - | KKS -

Kalwings: 19-09, 20-11, 21-11,
22-12, 24-07

KT 140015
KOCHBO WACO
Spn Mat. 84

KT 100025
KOCHBO KT100025
Oud. 11j | OEK 28m | TKP 370d
Kalwers 8 | Gespeen 5 | Spn. Mat. 96
Gem. SI 106 | Spn. Mat. 96

FR 130039 HH
SANBACH EL DARADO
Spn Mat. 59

FR 130016
SANBACH EVE
Oud. 4j | OEK 28m | TKP 393d
Kalwers 3 | Gespeen 1 | Spn. Mat. 81
Gem. SI 76 | Spn. Mat. 81

A552
YARRAWONGA TROOPER

KT 070011
KOCHBO 07 11
Oud. 10j | Gem. SI 105
Kalwers 6 | Gespeen 4
VV 040074
VALLEY-VENTURE 04 74

KT 070008
KOCHBO SHOWGIRL 07 08
Oud. 6j | Gem. SI 100
Kalwers 3 | Gespeen 3
SP 890034
SANTAPINE GILMOUR

SP 100072
SANTAPINE BUTTERCUP
Oud. 13j | Gem. SI 100
Kalwers 9 | Gespeen 7
SP 080078
SANTAPINE ZADOC

FR 100010
SANBACH BLAPSIE
Oud. 6j | Gem. SI 116
Kalwers 3 | Gespeen 1

KOEIWAARDE 90

98	Kalfgemak Waarde
112	Kalfgroei Waarde
73	Melk Waarde
99	Onderhoudswaarde
78	Vrugbaarheidswaarde

GROEI WAARDE -

KARKAS WAARDE 103

PRODUKSIE WAARDE -

Geb. Gewig	205D Gewig	365D Gewig	540D Gewig	GDT Indeks	VOV Indeks	Skrotum	LH
-	217kg 114 (14)	-	-	-	-	-	-



Kalf en Moeder				Vrugbaarheid			
Geb. Dir.	Geb. Mat.	Spn. Dir.	Spn. Mat.	Skr. Omtr.	Vers Vrugb.	Koei Vrugb.	Lanklew.
97	106	112	73	106	80	77	103
41%	30%	69%	47%	21%	40%	23%	45%

Na-Speen Groei

Raam

Karkas

Na-Speen	GDT	VOV	Volw. Gewig	Hoogte	Lengte	OSO	Vet	Mar
107	107	110	102	106	103	100	96	97
20%	19%	16%	13%	21%	20%	14%	13%	11%

LOT 41 (F)



DRAGTIGE VERS



SANTAMÉ STOET

Reddersburg, Free State
0823723012
anneme.venter@gmail.com

H/A LIEFDEFONTEIN BOERDERY, 25
BERGHLAAN, DALSIG, STELLENBOSCH, 7600



Miostatien

Q204X	Nie Getoets
NT821	Nie Getoets
F94L	Nie Getoets

WP 220045 P
SANT-A-MÉ AMIE WP220045

Kuddeboek	SP
Geb. dtm	2022-12-03
Oud.	2j 9m
Inteling	0%

LL 160183 HH
LOCKLORE LL160183
Spn Mat. 100

Ouerskap	Vaar	Moer
DNS		
Genomies		

WP 180002
SANT-A-MÉ AMELIA 1802

Oud. 7j | OEK 29m | TKP 402d
Kalwers 5 | Gespeen 5 | Spn. Mat. 129
Gem. SI 113 | KKG 5.92 | KKS 55.2

Kalwings: 20-06, 21-10, 22-12,
23-12, 24-11

LL 110148 P
LOCKLORE LL110148
Spn Mat. 100

LL 070056
LOCKLORE 07 56
Oud. 15j | OEK 29m | TKP 400d
Kalwers 12 | Gespeen 10 | Spn. Mat. 101
Gem. SI 103 | Spn. Mat. 101

SU 080003
SURVIVOR 08 03
Spn Mat. 94

WP 130118 P
SANT-A-MÉ 13 118
Oud. 5j | OEK 36m | TKP 456d
Kalwers 2 | Gespeen 1 | Spn. Mat. 135
Gem. SI 119 | Spn. Mat. 135

LL 080057
LOCKLORE 08 57

LL 070057
LOCKLORE 07 57
Oud. 13j | Gem. SI 102
Kalwers 10 | Gespeen 9

LL 030074
LOCKLORE 03 74

GR 050077
GANADO ROJO 05 77
Oud. 5j | Gem. SI 92
Kalwers 3 | Gespeen 3

JO 980064
BIG J MONTY 9864

JO 020158
BIG J 02 158
Oud. 11j | Gem. SI 101
Kalwers 8 | Gespeen 5

***MS**
MULTIPLE *SIRE
WP 080142 P
SANT-A-MÉ 08 142
Oud. 13j | Gem. SI 99
Kalwers 10 | Gespeen 3

KOEIWAARDE 111

105	Kalfgemak Waarde
105	Kalfgroei Waarde
115	Melk Waarde
108	Onderhoudswaarde
93	Vrugbaarheidswaarde

GROEI WAARDE 111

KARKAS WAARDE 113

PRODUKSIE WAARDE 110

Geb. Gewig	205D Gewig	365D Gewig	540D Gewig	GDT Indeks	VOV Indeks	Skrotum	LH
34kg	267kg 112 (13)	273kg 106 (5)	-	-	-	- (B1)	-



Kalf en Moeder				Vrugbaarheid			
Geb. Dir.	Geb. Mat.	Spn. Dir.	Spn. Mat.	Skr. Omtr.	Vers Vrugb.	Koei Vrugb.	Lanklew.
101	112	105	115	122	92	101	92
70%	41%	67%	51%	47%	41%	26%	50%

Na-Speen Groei

Raam

Karkas

Na-Speen	GDT	VOV	Volw. Gewig	Hoogte	Lengte	OSO	Vet	Mar
110	116	104	89	128	120	132	104	115
52%	43%	12%	27%	47%	46%	40%	37%	36%

VERKOPER OPMERKINGS: Swaar dragtige poena vers. Het by WP 22-49 en WP 21-34 geloop.

LOT 42 (F)

PREGNANT HEIFER



SP 230023 P
SANTAPINE SP 230023



PINEKLOOF TRUST

Ladybrand, Free State
0824102401
pinnacle.santas@gmail.com

P.O. BOX 287, LADYBRAND, 9745



Myostatin	
Q204X	Not Tested
NT821	Not Tested
F94L	Not Tested

Herd Book	SP
Birth date	2023-03-31
Age	2y 5m
Inbreeding	0%

COW VALUE 101

100	Calving Ease Value
113	Calf Growth Value
89	Milk Value
81	Maintenance Value
91	Fertility Value

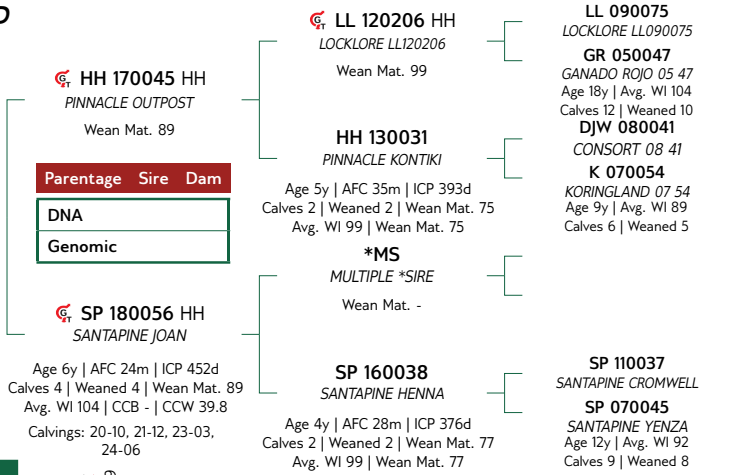
GROWTH VALUE 104

CARCASS VALUE 102

PRODUCTION VALUE 100

Birth Weight	205D Weight	365D Weight	540D Weight	ADG Index	FCR Index	Scrotum	LH
-	223kg 98 (11)	-	-	-	-	-	-

SELLER REMARKS: Polled heifer. 7 months in calf to polled bull SP 22-58 (Lot 4).



Calf and Mother				Fertility			
Birth Dir.	Birth Mat.	Wean Dir.	Wean Mat.	Scr. Circ.	Heifer Fert.	Cow Fert.	Longev.
101	99	113	89	91	86	95	104
46%	30%	71%	53%	27%	46%	24%	50%

Post-Wean Growth			Frame			Carcass		
Post Wean	ADG	FCR	Mature Weight	Height	Length	EMA	Fat	Mar
115	107	106	123	115	110	108	89	104
25%	24%	21%	36%	27%	25%	23%	21%	20%

LOT 43 (F)

PREGNANT HEIFER



SP 220100 P
SANTAPINE SP220100



PINEKLOOF TRUST

Ladybrand, Free State
0824102401
pinnacle.santas@gmail.com

P.O. BOX 287, LADYBRAND, 9745



Myostatin	
Q204X	Not Tested
NT821	Not Tested
F94L	Not Tested

Herd Book	SP
Birth date	2022-10-06
Age	2y 11m
Inbreeding	0%

COW VALUE 108

89	Calving Ease Value
116	Calf Growth Value
92	Milk Value
91	Maintenance Value
103	Fertility Value

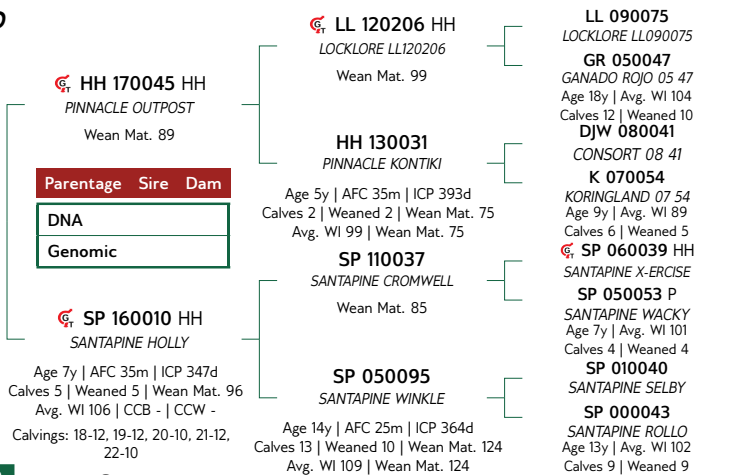
GROWTH VALUE 109

CARCASS VALUE 109

PRODUCTION VALUE 107

Birth Weight	205D Weight	365D Weight	540D Weight	ADG Index	FCR Index	Scrotum	LH
-	204kg 103 (28)	-	-	-	-	-	-

SELLER REMARKS: Long bodied polled heifer. Heavy in calf to FR 15-90.



Calf and Mother				Fertility			
Birth Dir.	Birth Mat.	Wean Dir.	Wean Mat.	Scr. Circ.	Heifer Fert.	Cow Fert.	Longev.
90	103	116	92	97	109	100	95
46%	31%	72%	55%	30%	49%	28%	52%

Post-Wean Growth			Frame			Carcass		
Post Wean	ADG	FCR	Mature Weight	Height	Length	EMA	Fat	Mar
118	114	115	110	112	107	101	101	98
28%	27%	25%	32%	30%	29%	24%	22%	21%

LOT 44 (F)

KOEI MET KALF



SANBACH TRUST

Excelsior, Free State
0827752408
jorinarautenbach@gmail.com

PLAAS LINANA 1303, EXCELSIOR, 9760

Laaste Kalf

Kalf ID	FR 250045 (F)
Geb. datum	2025-07-14
Vaar ID	SP 210012

Kalwings: 25-07



Moestaties

Q204X	Nie Getoets
NT821	Nie Getoets
F94L	Nie Getoets

FR 230003

SANBACH VASANTA

Kuddeboek	SP
Geb. dtm	2023-01-04
Oud.	2j 8m
Inteling	7%
OEK	30m
Kalwers	1
Gespeen	0
Gem. SI	-
TKP	-

FR 170061 HH
SANBACH KAYDEN
Spn Mat. 95

Ouerskap	Vaar	Moer
DNS		
Genomies		

FR 200032
SANBACH OLGA

Oud. 5j | OEK 34m | TKP 436d
Kalwers 3 | Gespeen 2 | Spn. Mat. 100
Gem. SI 96 | KKG - | KKS -

Kalwings: 23-01, 24-05, 25-05

SP 110076

SANTAPINE CABANA

Spn Mat. 76

FR 120081 P

SANBACH DENO

Oud. 12j | OEK 26m | TKP 433d
Kalwers 8 | Gespeen 8 | Spn. Mat. 98
Gem. SI 95 | Spn. Mat. 98

FR 150093 HH

SANBACH GEVAARLIK

Spn Mat. 117

FR 050020 P

SANBACH 05 20

Oud. 17j | OEK - | TKP 383d
Kalwers 14 | Gespeen 7 | Spn. Mat. 88
Gem. SI 90 | Spn. Mat. 88

KT 080007

KOCHBO PAPPARAZZI

SP 060099
SANTAPINE X-TENT
Oud. 9j | Gem. SI 107
Kalwers 5 | Gespeen 5

ER 000015
CE-RON RAFT 15

FR 090016
SANBACH ASTER
Oud. 14j | Gem. SI 97
Kalwers 9 | Gespeen 5

SP 110076
SANTAPINE CABANA

FR 060197
SANBACH 06 197
Oud. 15j | Gem. SI 109
Kalwers 13 | Gespeen 5

SV 000237
SANDFONTEIN BILL

KOEIWAARDE 94

99	Kalfgemak Waarde
102	Kalfgroei Waarde
98	Melk Waarde
100	Onderhoudswaarde
89	Vrugbaarheidswaarde

GROEI WAARDE 104

KARKAS WAARDE 95

PRODUKSIE WAARDE 94



Kalf en Moeder				Vrugbaarheid			
Geb. Dir.	Geb. Mat.	Spn. Dir.	Spn. Mat.	Skr. Omtr.	Vers Vrugb.	Koei Vrugb.	Lanklew.
102	90	102	98	96	92	85	105
37%	29%	70%	50%	32%	44%	25%	51%

Na-Speen Groei

Na-Speen	GDT	VOV	Volw. Gewig
110	109	107	99
27%	29%	27%	14%

Raam

Hoogte	Lengte
92	97
33%	32%

Karkas

OSO	Vet	Mar
109	59	93
28%	26%	26%

Geb. Gewig	205D Gewig	365D Gewig	540D Gewig	GDT Indeks	VOV Indeks	Skrotum	LH
-	179kg 91 (14)	-	-	-	-	-	-

VERKOPER OPMERKINGS: Word verkoop met verskalf (FR 25-45) van poena bul SP 21-12.

LOT 45 (F)

KOEI MET KALF



SANBACH TRUST

Excelsior, Free State
0827752408
jorinarautenbach@gmail.com

PLAAS LINANA 1303, EXCELSIOR, 9760

Laaste Kalf

Kalf ID	FR 250048 (F)
Geb. datum	2025-07-17
Vaar ID	SP 210012

Kalwings: 25-07



Moestaties

Q204X	Nie Getoets
NT821	Nie Getoets
F94L	Nie Getoets

FR 230027

SANBACH BERTA

Kuddeboek	SP
Geb. dtm	2023-03-03
Oud.	2j 6m
Inteling	1%
OEK	28m
Kalwers	1
Gespeen	0
Gem. SI	-
TKP	-

KT 180005 HH
KOCHBO ALADIN
Spn Mat. 83

Ouerskap	Vaar	Moer
DNS		
Genomies		

JC 180026
JOCHARL 18 026

Oud. 7j | OEK 31m | TKP 397d
Kalwers 5 | Gespeen 4 | Spn. Mat. 116
Gem. SI 110 | KKG - | KKS -

Kalwings: 20-10, 21-10, 23-03, 24-02, 25-02

KT 140015

KOCHBO WACO

Spn Mat. 84

KT 100025

KOCHBO KT100025

Oud. 11j | OEK 28m | TKP 370d
Kalwers 8 | Gespeen 5 | Spn. Mat. 96
Gem. SI 106 | Spn. Mat. 96

KVS 110137

KLEYNHANSVELDE KVS110137

Spn Mat. 86

JC 130009

JOCHARL 13 009

Oud. 12j | OEK 32m | TKP 432d
Kalwers 9 | Gespeen 7 | Spn. Mat. 125
Gem. SI 108 | Spn. Mat. 125

A552

YARRAWONGA TROOPER

KT 070011
KOCHBO 07 11
Oud. 10j | Gem. SI 105
Kalwers 6 | Gespeen 4

VV 040074
VALLEY-VENTURE 04 74

KT 070008
KOCHBO SHOWGIRL 07 08
Oud. 6j | Gem. SI 100
Kalwers 3 | Gespeen 3

DO 070028
BOA SANTA FURNA

CTR 030068
CRONDOM INDIGO
Oud. 17j | Gem. SI 107
Kalwers 8 | Gespeen 4

JC 070072
JOCHARL DIAMAND 07 72

JC 080184
JOCHARL 08 184 DIAMAND
Oud. 9j | Gem. SI 97
Kalwers 7 | Gespeen 6

KOEIWAARDE 112

88	Kalfgemak Waarde
125	Kalfgroei Waarde
99	Melk Waarde
78	Onderhoudswaarde
91	Vrugbaarheidswaarde

GROEI WAARDE -

KARKAS WAARDE 125

PRODUKSIE WAARDE -



Kalf en Moeder				Vrugbaarheid			
Geb. Dir.	Geb. Mat.	Spn. Dir.	Spn. Mat.	Skr. Omtr.	Vers Vrugb.	Koei Vrugb.	Lanklew.
89	103	125	99	119	77	103	108
43%	30%	68%	45%	17%	35%	18%	46%

Na-Speen Groei

Na-Speen	GDT	VOV	Volw. Gewig
119	123	113	126
18%	13%	9%	13%

Raam

Hoogte	Lengte
126	129
15%	14%

Karkas

OSO	Vet	Mar
127	95	106
14%	13%	12%

Geb. Gewig	205D Gewig	365D Gewig	540D Gewig	GDT Indeks	VOV Indeks	Skrotum	LH
-	224kg 111 (14)	-	-	-	-	-	-

VERKOPER OPMERKINGS: Word verkoop met verskalf (FR 25-48) van poena bul SP 21-12.

LOT 46 (F)

PREGNANT HEIFER



PINEKLOOF TRUST

Ladybrand, Free State
0824102401
pinnacle.santas@gmail.com

P.O. BOX 287, LADYBRAND, 9745



Myostatin	
Q204X	Not Tested
NT821	Not Tested
F94L	Not Tested

SP 230079
SANTAPINE SP 230079

Herd Book	SP
Birth date	2023-09-17
Age	1y 12m
Inbreeding	0%

SP 140020 HH
SANTAPINE FIREMAN
Wean Mat. 123

Parentage	Sire	Dam
DNA		
Genomic		

SP 180065
SANTAPINE JAZZ

Age 6y | AFC 31m | ICP 414d
Calves 4 | Weaned 4 | Wean Mat. 119
Avg. WI 98 | CCB - | CCW 35.9
Calvings: 21-05, 22-05, 23-09, 24-10

23
YARRAWONGA DICTATOR
Wean Mat. 99

SP 110048 HH
SANTAPINE CONNIE

Age 12y | AFC 31m | ICP 395d
Calves 9 | Weaned 7 | Wean Mat. 144
Avg. WI 113 | Wean Mat. 144

JH 140070
SANTARUST 1470
Wean Mat. 151

SP 110019
SANTAPINE CLEO

Age 8y | AFC 35m | ICP 413d
Calves 5 | Weaned 3 | Wean Mat. 101
Avg. WI 102 | Wean Mat. 101

WACO ARMADA
WACO ARMADA

YARRAWONGA C265
YARRAWONGA C265
Age 38y | Avg. WI -
Calves - | Weaned -

JR 060002 Pch
JR RANCH 06 02 (P)

SP 010026
SANTAPINE SHERREL
Age 11y | Avg. WI 98
Calves 9 | Weaned 8

KV5 080229
KLEYNHANSVELDE 08 229

JH 100097 HH
SANTARUST 10 97
Age 12y | Avg. WI 118
Calves 9 | Weaned 8

SP 060039 HH
SANTAPINE X-ERCISE

SP 070012
SANTAPINE YAPP
Age 12y | Avg. WI 98
Calves 9 | Weaned 6

COW VALUE 122

101	Calving Ease Value
105	Calf Growth Value
121	Milk Value
91	Maintenance Value
123	Fertility Value

GROWTH VALUE 106

CARCASS VALUE 109

PRODUCTION VALUE 119



Calf and Mother				Fertility			
Birth Dir.	Birth Mat.	Wean Dir.	Wean Mat.	Scr. Circ.	Heifer Fert.	Cow Fert.	Longev.
103	94	105	121	103	118	126	100
51%	41%	71%	59%	42%	50%	34%	53%

Post-Wean Growth			Frame			Carcass		
Post Wean	ADG	FCR	Mature Weight	Height	Length	EMA	Fat	Mar
105	108	115	107	97	100	84	105	117
34%	37%	34%	37%	43%	40%	38%	35%	34%

Birth Weight	205D Weight	365D Weight	540D Weight	ADG Index	FCR Index	Scrotum	LH
-	202kg 95 (16)	-	-	-	-	-	-

SELLER REMARKS: 7 months in calf to polled bull SP 23-10.

LOT 47 (F)

PREGNANT HEIFER



PINEKLOOF TRUST

Ladybrand, Free State
0824102401
pinnacle.santas@gmail.com

P.O. BOX 287, LADYBRAND, 9745



Myostatin	
Q204X	Not Tested
NT821	Not Tested
F94L	Not Tested

SP 220140
SANTAPINE SP 220140

Herd Book	SP
Birth date	2022-12-17
Age	2y 9m
Inbreeding	0%

RD 170020 HH
RED DIAMOND APOLLO
Wean Mat. 99

Parentage	Sire	Dam
DNA		
Genomic		

DT 170290 P
RENSBOU MAKKIE

Age 7y | AFC 32m | ICP 452d
Calves 5 | Weaned 3 | Wean Mat. 97
Avg. WI 104 | CCB - | CCW 32.6
Calvings: 20-06, 21-09, 22-12, 23-12, 25-05

VV 120052 HH
VALLEY-VENTURE VV120052
Wean Mat. 101

SP 140029
SANTAPINE FLICK

Age 11y | AFC 37m | ICP 381d
Calves 8 | Weaned 3 | Wean Mat. 102
Avg. WI 105 | Wean Mat. 102

DT 110013 P
RENSBOU DT110013
Wean Mat. 87

DT 130076 P
RENSBOU TUXE

Age 11y | AFC 35m | ICP 377d
Calves 9 | Weaned 8 | Wean Mat. 106
Avg. WI 103 | Wean Mat. 106

VV 020194 HH
VALLEY-VENTURE CHAMP 02 194

VV 010143
VALLEY-VENTURE 01 143
Age 14y | Avg. WI 101
Calves 10 | Weaned 9

HH 110024
PINNACLE ICEMAN
SP 090033 P
SANTAPINE AHOY
Age 7y | Avg. WI 105
Calves 4 | Weaned 4

DT 070048
RENSBOU MAKMAN 07 48

DT 060063
RENSBOU SMOOTH
Age 12y | Avg. WI 103
Calves 9 | Weaned 9

DT 080212
RENSBOU EXPRESS

DT 080106
RENSBOU MISS USA 08 106
Age 12y | Avg. WI 90
Calves 9 | Weaned 8

COW VALUE 104

96	Calving Ease Value
109	Calf Growth Value
98	Milk Value
91	Maintenance Value
98	Fertility Value

GROWTH VALUE 108

CARCASS VALUE 107

PRODUCTION VALUE 103



Calf and Mother				Fertility			
Birth Dir.	Birth Mat.	Wean Dir.	Wean Mat.	Scr. Circ.	Heifer Fert.	Cow Fert.	Longev.
95	104	109	98	107	94	103	103
43%	30%	58%	46%	29%	34%	23%	46%

Post-Wean Growth			Frame			Carcass		
Post Wean	ADG	FCR	Mature Weight	Height	Length	EMA	Fat	Mar
107	112	113	109	105	108	109	98	98
23%	25%	14%	12%	29%	28%	19%	17%	17%

Birth Weight	205D Weight	365D Weight	540D Weight	ADG Index	FCR Index	Scrotum	LH
-	221kg 114 (28)	-	-	-	-	-	-

SELLER REMARKS: 7 months in calf to FR 21-70.

LOT 48 (F)

DRAGTIGE VERS



SP 220132
SANTAPINE SP 220132

Kuddeboek	SP
Geb. dtm	2022-11-26
Oud.	2j 9m
Inteling	1%



PINEKLOOF TRUST

Ladybrand, Free State
0824102401
pinnacle.santas@gmail.com

P.O. BOX 287, LADYBRAND, 9745



Miostatien

Q204X	Nie Getoets
NT821	Nie Getoets
F94L	Nie Getoets

RD 170020 HH
RED DIAMOND APOLLO
Spn Mat. 99

Ouerskap	Vaar	Moer
DNS		
Genomies		

HH 180009
PINNACLE PALACE

Oud. 7j | OEK 23m | TKP 420d
Kalwers 5 | Gespeen 4 | Spn. Mat. 102
Gem. SI 101 | KKG - | KKS 46.5
Kalwings: 20-04, 21-08, 22-11,
23-11, 24-11

VV 120052 HH
VALLEY-VENTURE VV120052
Spn Mat. 101

SP 140029
SANTAPINE FLICK

Oud. 11j | OEK 37m | TKP 381d
Kalwers 8 | Gespeen 3 | Spn. Mat. 102
Gem. SI 105 | Spn. Mat. 102

CJ 130025 HH
EMMANEUL 13 25
Spn Mat. 91

TOL 080082
TOLNEL TOL080082

Oud. 13j | OEK 37m | TKP 387d
Kalwers 10 | Gespeen 9 | Spn. Mat. 107
Gem. SI 102 | Spn. Mat. 107

VV 020194 HH
VALLEY-VENTURE CHAMP 02 194

VV 010143
VALLEY-VENTURE 01 143
Oud. 14j | Gem. SI 101
Kalwers 10 | Gespeen 9

HH 110024
PINNACLE ICEMAN

SP 090033 P
SANTAPINE AHOY
Oud. 7j | Gem. SI 105
Kalwers 4 | Gespeen 4

SP 060030
SANTAPINE X-CLUSIVE

ER 050064
CE-RON 05 64
Oud. 6j | Gem. SI -
Kalwers 4 | Gespeen -

TOL 040040
TOLNEL 04 40

TOL 050106
TOLNEL 05 106
Oud. 5j | Gem. SI 99
Kalwers 2 | Gespeen 1

KOEIWAARDE 103

83	Kalfgemak Waarde
114	Kalfgroei Waarde
101	Melk Waarde
94	Onderhoudswaarde
94	Vrugbaarheidswaarde

GROEI WAARDE 108

KARKAS WAARDE 108

PRODUKSIE WAARDE 102



Kalf en Moeder				Vrugbaarheid			
Geb. Dir.	Geb. Mat.	Spn. Dir.	Spn. Mat.	Skr. Omtr.	Vers Vrugb.	Koei Vrugb.	Lanklew.
83	100	114	101	107	99	91	98
48%	35%	70%	48%	27%	39%	23%	48%

Na-Speen Groei

Raam

Karkas

Na-Speen	GDT	VOV	Volw. Gewig	Hoogte	Lengte	OSO	Vet	Mar
113	112	112	106	108	109	108	100	97
26%	23%	18%	14%	27%	26%	21%	19%	19%

Geb. Gewig	205D Gewig	365D Gewig	540D Gewig	GDT Indeks	VOV Indeks	Skrotum	LH
-	200kg 101 (28)	-	-	-	-	-	-

VERKOPER OPMERKINGS: 7 months in calf to FR 21-70.

Dier Info				Actual Values										Expected Breeding Values										Indices		Dam		
LOT	Animal ID	Sex	SEC	Birth Wt (kg)	205d Wt (kg)	CCB Ratio	CCW Ratio	Length Height Ratio	Scr. Circ. (mm)	Birth Dir (kg)	Birth Mat (kg)	Birth Wt (kg)	Wean Dir (kg)	Wean Mat (kg)	Post Wean (kg)	Mature Weight (kg)	ADG (g/d)	FCR (kg:kg)	Scr. Circ. (mm)	Height (mm)	Length (mm)	Wean ADG	Scr. Circ. (mm)	Avg. Wean Index	Nr. Calves	Repr. Index		
Breed Average																												
Auction Average				36	241	6.57	45.0	-	-	1.98	-0.12	14.9	0.4	23	19	93	9.5	12.0	24.0	38	106	-	108	103	4.0	103		
1	SP 220002	M	SP	-	295	-	-	-	-	3.10	0.22	33.8	5.0	53.0	51.2	225	-40	28.2	34	62	116	-	135	116	3	99		
2	FR 220084	M	SP	-	222	-	-	-	-	0.90	-0.33	15.0	-2.5	25.9	18.7	89	-22	2.6	4	17	91	-	87	97	3	100		
3	OLG 210008	M	SP	33	230	-	-	-	-	1.34	0.19	16.6	-1.1	31.4	20.8	178	-45	8.8	10	29	112	-	99	98	3	75		
4	SP 220058	M	SP	-	248	-	-	-	-	2.55	-0.04	23.3	4.8	44.8	27.6	222	-43	18.2	23	49	103	-	116	106	7	112		
5	SP 220063	M	SP	-	262	-	-	-	-	1.60	0.00	17.1	0.2	26.6	27.2	113	-26	13.6	11	27	100	-	108	100	5	104		
6	FR 210064	M	SP	-	276	-	-	-	-	2.51	-0.25	26.3	-1.2	44.4	33.6	194	-52	20.6	17	38	117	-	121	106	4	98		
7	OLG 220041	M	SP	37	299	-	-	-	-	2.44	0.76	27.4	7.6	55.0	40.0	237	-59	23.9	25	50	120	-	127	111	4	115		
8	SP 220012	M	SP	-	299	-	-	-	-	2.85	-0.50	25.3	-1.4	40.8	34.3	167	-42	11	25	50	117	-	103	103	5	108		
9	SP 220068	M	SP	-	262	-	-	-	-	3.11	-0.64	29.6	-0.9	44.9	33.9	184	-43	19.5	26	50	126	-	119	114	3	101		
10	FR 220039	M	SP	-	251	-	-	-	-	1.19	0.32	19.9	2.0	33.8	22.7	161	-45	13.9	9	26	100	-	108	100	7	109		
11	FR 220045	M	SP	-	263	-	-	-	-	1.79	0.04	19.0	-0.4	36.6	23.6	168	-42	16.6	14	28	105	-	113	106	4	102		
12	OLG 220052	M	SP	34	273	-	-	-	-	1.58	0.32	18.9	2.3	39.5	24.8	148	-24	10.9	13	35	100	-	103	104	7	105		
13	SP 220086	M	SP	-	230	-	-	-	-	2.75	-0.63	27.8	-0.6	41.4	37.7	180	-30	17.7	21	48	108	-	115	109	2	74		
14	SP 220030	M	SP	-	229	-	-	-	-	1.79	0.19	19.8	2.1	38.0	24.6	203	-39	15.9	15	41	94	-	112	98	8	115		
15	SP 220036	M	SP	-	252	-	-	-	-	3.24	-0.69	31.1	1.4	50.4	53.0	224	-45	18.1	36	60	109	-	116	111	7	112		
16	FR 220052	M	SP	-	247	-	-	-	-	1.26	0.21	13.4	1.3	27.5	10.7	132	-31	6.7	10	23	98	-	95	107	5	81		
17	FR 220083	M	SP	-	283	-	-	-	-	3.17	-0.33	30.8	-1.9	45.6	37.0	211	-40	20.6	30	58	121	-	121	109	5	107		
18	OLG 220018	M	SP	35	259	-	-	-	-	2.43	0.47	18.8	3.6	35.5	20.5	166	-42	8.7	13	30	99	-	99	100	5	109		
19	SP 220108	M	SP	-	236	-	-	-	-	1.45	-0.19	22.0	2.4	34.1	32.8	162	-42	16.6	20	40	113	-	113	108	4	105		
20	HH 220005	M	SP	-	274	-	-	-	-	2.26	0.09	22.4	2.0	37.8	38.0	196	-48	22.1	18	38	110	-	123	110	7	102		
21	SP 220094	M	SP	-	236	-	-	-	-	2.86	-0.56	25.9	-5.4	40.6	38.4	141	-32	9.7	20	36	113	-	100	93	7	109		
23	FR 220106	M	SP	-	247	-	-	-	-	1.55	-0.47	20.4	-4.4	32.6	22.6	126	-24	9.8	9	26	103	-	101	103	1	93		
24	OLG 220048	M	SP	37	274	-	-	-	-	1.86	0.38	17.3	3.3	35.0	17.8	156	-30	5.2	14	35	100	-	92	99	5	108		
25	SP 220084	M	SP	-	239	-	-	-	-	1.42	0.25	24.4	2.3	40.9	35.5	176	-37	16.6	18	42	113	-	113	108	6	119		
26	HH 220003	M	SP	-	226	-	-	-	-	1.42	-0.04	22.4	5.8	36.2	27.0	165	-44	20.5	17	33	88	-	120	102	3	90		

Dier Info		Werklike Syfers										Verwagte Teelwaardes					Indekse			Moeder									
LOT	Dier ID	Geslag	AFD	Geb. Gewig (kg)	205d Gewig (kg)	KKG Verh.	KKS Verh.	Lengte Hoogte Verh.	Skr. Omtr. (mm)	Geb Dir (kg)	Geb Mat (kg)	Skn Dir (kg)	Skn Mat (kg)	Skn Spn (kg)	Na-Skn (kg)	Volw. Gewig (kg)	GDT (g/d)	VOV (kg:kg)	Skr. Omtr. (mm)	Hoogte (mm)	Lengte (mm)	Spn.	GDT	Skr. Omtr.	Gem. Spn. Indeks	Aant. Kalw.	Repr. Indeks		
Ras Gemiddeld																													
Aanbod Gemiddeld																													
				36	241	6.57	45.0	-	-	1.21	-0.12	14.9	0.4	23	19	93	93	9.5	12.0	24.0									
27	SP 220016	M	SP	-	252	-	-	-	-	2.19	-0.01	24.2	1.3	41.3	31.7	179	-41	9.9	27	44	109	-	101	103	4	4	112		
28	SP 220125	M	SP	-	242	-	-	-	-	2.64	-0.45	24.2	-6.5	38.3	25.5	150	-28	4.3	19	40	117	-	90	93	3	3	105		
29	FR 220102	M	SP	-	260	-	-	-	-	2.17	-0.51	25.5	-4.4	37.0	33.5	148	-31	14.9	19	40	110	-	110	101	9	9	105		
30	SP 220104	V	SP	-	210	-	-	-	-	2.26	-0.40	18.8	-0.1	30.6	16.4	106	-21	8.7	17	34	107	-	98	104	5	5	103		
31	SP 230078	V	SP	-	202	-	-	-	-	1.28	-0.18	16.2	-0.7	29.0	25.2	97	-22	3.5	11	25	85	-	89	94	2	2	94		
32	FR 220125	V	SP	-	243	-	-	-	-	3.32	-0.06	29.0	5.3	43.1	40.4	232	-43	22.4	35	66	131	-	124	115	6	6	104		
33	WP 220028	V	SP	39	241	7.33	-	-	-	1.90	-0.29	10.9	7.0	16.4	4.7	60	-2	16.6	13	18	97	-	113	103	4	4	104		
34	HH 230001	V	SP	-	231	-	44.5	-	-	1.86	-0.24	19.6	-0.8	36.2	26.1	150	-30	12.8	14	32	101	-	106	101	2	2	99		
35	SP 230026	V	SP	-	218	-	48.6	-	-	1.76	0.00	25.2	-2.7	40.3	22.8	152	-26	16	21	36	95	-	112	91	3	3	100		
36	FR 220134	V	SP	-	166	-	-	-	-	1.13	-0.36	14.4	-2.8	25.6	7.7	69	-11	-1	-2	10	83	-	82	83	1	1	65		
37	WP 220043	V	SP	36	213	6.47	-	-	-	0.33	-0.04	16.5	-1.9	27.9	16.5	124	-12	18.8	26	41	103	-	117	96	4	4	122		
38	SP 230017	V	SP	-	250	-	-	-	-	2.40	-0.08	26.7	1.5	43.6	40.2	200	-44	16.6	24	46	110	-	113	110	1	1	102		
39	SP 230071	V	SP	-	241	-	51.3	-	-	3.52	-0.25	31.1	3.2	50.0	48.3	213	-44	13.3	25	57	117	-	107	109	4	4	106		
40	FR 220131	V	SP	-	217	-	-	-	-	1.47	-0.34	21.1	-7.6	31.5	21.0	122	-31	12.9	16	28	114	-	106	93	5	5	100		
41	WP 220045	V	SP	34	267	5.92	-	-	-	1.09	-0.56	17.8	4.8	35.7	9.7	157	-24	21.2	29	45	112	-	122	113	5	5	110		
42	SP 230023	V	SP	-	223	-	42.2	-	-	1.14	-0.09	21.8	-2.9	38.9	40.6	121	-26	4.4	21	35	98	-	91	104	4	4	110		
43	SP 220100	V	SP	-	204	-	-	-	-	2.07	-0.23	23.5	-2.0	41.4	28.6	150	-37	8	19	32	103	-	97	106	5	5	109		
44	FR 230003	V	SP	-	179	-	-	-	-	1.02	0.23	15.8	-0.2	34.2	18.3	131	-28	7.3	7	21	91	-	96	96	3	3	98		
45	FR 230027	V	SP	-	224	-	-	-	-	2.10	-0.22	28.1	0.1	41.7	43.2	186	-35	19.8	28	55	111	-	119	110	5	5	108		
46	SP 230079	V	SP	-	202	-	38.4	-	-	0.97	0.11	17.4	6.7	30.4	25.9	126	-36	11.1	10	24	95	-	103	98	4	4	105		
47	SP 220140	V	SP	-	221	-	-	-	-	1.60	-0.29	19.7	-0.2	31.8	28.1	142	-34	13.3	15	32	114	-	107	104	5	5	99		
48	SP 220132	V	SP	-	200	-	-	-	-	2.61	-0.11	22.0	0.8	36.4	24.8	142	-34	13.2	17	34	101	-	107	101	5	5	113		

EXPLANATION OF CATALOGUE ABBREVIATIONS

VERDUIDELIKING VAN KATALOGUS AFKORTINGS

Lot Number	LOT	LOT	Lot Nommer
Estimated breeding value	EBV	EBV	Beraamde teelwaarde
Parentage verification	Parentage	Ouerskap	Ouerskap verifikasie
Age in years	AGE	OUD.	Ouderdom in jaar
Age at First Calving	AFC	OEK	Ouderdom met Eerst Kalwing
Intercalving Period	ICP	TKP	Tussen-Kalf Periode
Number of calvings	Calvings	Kalwings	Aantal kalwings
Number of calves weaned	Weaned	Gespeen	Aantal kalwers gespeen
Average Wean index	Avg. WI	Gem. SI	Gemiddelde speen indeks
Animal identification number	ID	ID	Dier se identifikasie nommer
Herd Book Section	SEC	AFD	Kuddeboek Afdeling
Herd Book Section: Pending Registration	PEN	PEN	Kuddeboek Afdeling: Wag vir Registrasie
Herd Book Section: Not for Registration	NFR	NFR	Kuddeboek Afdeling: Nie vir Registrasie
Herd Book Section: Foundation Generation	FO	FO	Kuddeboek Afdeling: Fondasie Generasie
Herd Book Section: Appendix A	A	A	Kuddeboek Afdeling: Aanhangsel A
Herd Book Section: Appendix B	B	B	Kuddeboek Afdeling: Aanhangsel B
Herd Book Section: Studbook Proper, a registered animal	SP	SP	Kuddeboek Afdeling: Studbook Proper, 'n geregistreerde dier
Genomically Tested	GT	GT	Genomies Getoets
Homozygous Horned (Celtic test)	HH(c)	HH(c)	Homosigoties horings (Celtic toets)
Homozygous Polled (Celtic test)	PP(c)	PP(c)	Homosigotiets Poena (Celtic toets)
Heterozygous Polled (Celtic test)	Pp(c)	Pp(c)	Heterosigoties Poena (Celtic toets)
Phenotypically Polled	P	P	Fenotopies Poena
Birth Direct breeding value	Birth Dir.	Geb. Dir	Geboorte Direk teelwaarde
Wean Direct breeding value	Wean Dir.	Spn. Dir.	Speen Direk teelwaarde
Wean Maternal breeding value	Wean Mat.	SPn. Mat.	Speen Maternaal teelwaarde
Scrotal Circumference	Scr. Circ.	Skr. Omt.	Skrotum omtrek
Heifer Fertility	Heifer Fert.	Vers Vrugb.	Vers Vrugbaarheid
Cow Fertility	Cow Fert.	Koei Vrugb.	Koei Vrugbaarheid
Longevity	Longev.	Lankl.	Lanklewendheid
Mature Weight	Mat. Wt.	Volw. Gewig	Volwasse gewig
Average Daily Gain (g/day)	ADG	GDT	Gemiddelde Daaglikse Toename
Feed Conversion Ratio (kg:kg)	FCR	VOV	Voeromset Verhouding
Eye Muscle Area	EMA	OSO	Oogspier grootte
Backfat Thickness	Fat	Vet	Rugvet Diepte
Marbeling (intra-muscular fat)	Mar	Mar	Marmering (binne-spierse vet)
Actual Birth weight	Birth Wt.	Geb. gewig	Werklike Geboorte gewig
205-day Dam-age corrected weight	205d Wt.	205d gewig	205-dag Moeder-ouderdom gekorrigeerde gewig
365-day weight index	365D Index	365D Indeks	365-dae gewig indeks
540-day weight index	540D Index	540D Indeks	540-dae gewig indeks
Length-Height ratio	LH	LH	Lengte-Hoogte Verhouding
Cow-Calf Birth Ratio	CCG	KKG	Koei-Kalf Geboorte Verhouding
Cow-Calf Wean Ratio	CCW	KKS	Koei-Kalf Speen Verhouding
Average Weaning Index	Avg. WI	Gem. SI	Gemiddelde speen indeks
Number of Calves	Nr. Calves	Aant. Kalw.	Aantal kalwers
Reproduction Index	Repr. Index	Repr. Indeks	Reproduksie indeks
Animal sex: M - Male, F - Female	M / F	M / V	Dier geslag: M - Manlik, V - Vroulik

Commercial Females

Lot 49: Santapine

5 x in calf heifers (5-8 months)

Lot 50: Sanbach

4 x Verse met kalwers.

Lot 51: Santapine

5 x in calf heifers (5-8 months)

BEPALINGS EN VOORWAARDES TEN OPSIGTE VAN VERKOPE DEUR

VLEISSENTRAAAL BLOEMFONTEIN (Edms) Bpk – Registrasie no 1999/023878/07 (Hierna die "Maatskappy" genoem)

1. Alle goedere en lewendehawe (Hierna die "bates" genoem) word deur die Maatskappy as agent verkoop namens die Verkoper, wat hiermee die Maatskappy magtig om die koopprys van die Koper te verhaal. Die koopprys sluit nie BTW in nie en moet, tensy spesifiek anders afgekondig, by die koopprys bygetel en deur die Koper betaal word.
2. Die Verkoper waarborg hiermee dat daar geen beswaarings op sodanige bates bestaan nie, dat die gemelde bates die eiendom van die Verkoper is en dat die Verkoper bevoeg en wettig daarop geregtig is om die bates van die hand te sit. Die Verkoper waarborg verder, soos teenoor die Koper, dat die bates vry is van die verborge en ooglappende gebreke.
3. Die Maatskappy aanvaar geen aanspreeklikheid vir enige onttrekking van bates en verkoop, of vir enige uitrukklike of silswyende verklarings of waarborgte wat mondeling deur sy agente of werknemers of deur die Verkoper self gegee mag word nie.
4. Die Verkoper wat die bates te koop aanbied, aanvaar alle aanspreeklikheid rakende alle inligting wat verskat word wat betref stambome en opgreifheid, ouderdomme, datums van diens, gesondheidsstatus of draagbaarheid of enige ander besonderhede wat onjuis mag wees. Ingeval van enige geskil sal die Koper slegs 'n eis teen die Verkoper hê en nie teen die Maatskappy nie.
5. Die Koopprys is 'n kontant (onder sekere voorwaardes) of deur 'n bankgewaarborgde tjek betaalbaar deur die Koper aan die Maatskappy, tensy anders skriftelik ooreengekom, op die dag van verkoop ("die Betaaldatum").
6. Indien die Maatskappy toestem om die koopprys aan die Verkoper te betaal alvorens die Koper die Maatskappy betaal ("die betalingssterme-ooreenkoms"), sal die volgende van toepassing wees:
 - 6.1. Die afkopsie om die Verkoper Alkus te betaal berus in die alleen diskresie van die Maatskappy, wie sy diskresie alsonderlik mag uitoefen ten opsigte van elke transaksie waarvoor die Koper 'n party is, gesedeer en vorgepra.
 - 6.2. Ieder betaling van die bedrag soos na verwys in 6.1 hierbo, sal die Verkoper se reg, titel en belang in en tot enige aanspraak of regte teenoor die Koper ten opsigte van elke verkoopsooreenkoms, aan die Maatskappy.
 - 6.3. Geen Betalingssterme-ooreenkoms sal van krag wees nie tensy op skrif gestel en behoulik namens die Maatskappy onderteken is. Die fasilitering van enige verkoopstransaksie soos in hierdie klousule 6 verwys, sal streng volgens die bepallings van die terme en voorwaardes van die Betalingssterme-ooreenkoms wees.
 - 6.4. In geval van verskil van die inhoud van hierdie dokument en die Betalingssterme-ooreenkoms, sal die bepallings van die Betalingssterme-ooreenkoms geld.
 - 6.5. Geen aansoek vir krediet soos omskryf in artikel 8 van die "National Credit Act", Wet 34 van 2005, sal deur die Maatskappy ontvang of oorweeg word nie.

7. Die Verkoper waarborg teenoor die Maatskappy dat alle bates vry is van enige ooglappende of verborge gebreke en dat enige reg of eis wat ingevolge hierdie bepallings en voorwaardes aan die Maatskappy gesedeer word, vry is van enige gebrek of reg van aftrekking of verrekening en dat die gemelde reg of eis ten volle en onmiddellik teen die Koper atwingbaar is.

8. Die Koper is nie daaron geregtig om enige betaling van die koopprys aan die Maatskappy te weerhou as gevolg van enige moontlike of hangende eis wat hy teen die Verkoper, gebaseer op wanvoorstelling of vir enige rede hoegenaamd mag hê nie.

9. In die geval waar Kopers by 'n Velling moet registreer en sodanige geregistreerde Koper 'n ander persoon toelaat om met sy kopers kaart te koop, is die geregistreerde Koper aanspreeklik vir die betaling van sodanige aankope. Geen bod deur 'n nie-geregistreeerde koper sal deur die Maatskappy aanvaar word en die Koper sal geen eis hê met betrekking tot enige van die bates wat na bewering deur hom aangekoop is nie.

10. Onderworpe aan enige reserwes wat op enige van die Verkoper se bates geplaas word en aan die bepallings van klousules 14 en 15 hieronder, is die Koper by enige velling die hoogste bieder wat deur die Maatskappy se atsaar deur die val van die hammer aangedui word, of op sodanige ander wyse as wat hy mag kies.

11. Alle bates sal, onmiddellik nadat die bod toegestaan is, geag word aan die Koper gelever te wees. Niteenstaande lewering sal die koper nie geregtig wees om die bates te verwyder alvorens die volle koopprys, soos op die Maatskappy se faktuur aangedui, ten volle betaal is nie.

12. Alle wins, verlies of risiko ten opsigte van die bates sal op die Koper oorgaan sodra dit aan die Koper gelever is, wat dan op eie risiko en onkoste sodanige bates van die verkoopspreek moet verwyder, onderhewig aan klousule 11 hierbo.

13. Indien 'n vervoerkontraakteur enige bates van die verkoopspreek verwyder in opdrag van die Maatskappy, sal die kontraakteur geag word 'n agent van die Koper te wees, wat alle kostes en risiko's in verband met sodanige verwydering aanvaar.

14. Die velling word onder die uitsluitlike beheer van die Maatskappy plaas. Die Maatskappy behou die reg voor om, geheel na eie goeddunke, die bod van enige persoon te weier, om die beëly te reguleer, om die hoogste bieder aan te dui en om die orde van die velling te enige tyd te verander sonder om redes daarvoor te verskik. Indien die atsaar vermoed dat 'n bieder nie 'n bona fide bod gemaak het nie, of nie in staat is om die koopprys te betaal nie of nie bevredigende redings vir die betaling van die koopprys getref het nie, mag hy wêler om die bod van sodanige bieder te aanvaar of dit voorwaardelik aanvaar totdat die bieder hom trevede gestal

15. Indien 'n geskil tussen bieder ontstaan, sal die bates in geskil gehêel na die goeddunke van die Maatskappy weer opgeveel word.

16. Die Maatskappy is nie aanspreeklik vir enige verlies of skade veroorsaak deur of opgedoen ten opsigte van enige optrede deur die Maatskappy of sy helpers, werknemers of agente nie, miteenstaande 'n onderneming om die bates in bewaring te neem, daarvoor te sorg, dit te versend of te lewer nie. Alle bates word voetskots aan die Koper verkoop en die Maatskappy is nie aanspreeklik vir enige gebreke, verborge of andersins, wat met of sonder die kennis van die Maatskappy mag bestaan nie.

17. Die Koper moet voor die velling hom vergewis van enige gebreke in die bates en enige bod deur 'n Koper word geag aanvaarding van die bates te wees met enige ooglappende of verborge gebreke in hulle toestand, ten tye van verkoop.

18. Die Maatskappy behou die reg voor om enige tjek as betaling te weier.

19. Niteenstaande lewering, geen eienaarskap van die bates nie oor op die Koper totdat die volle koopprys plus rente indien betaalbaar, verleen is nie. Totdat alle bedrae verskuldig deur die Koper ten volle betaal is, onderhewig aan die bepallings van die Maatskappy, sal die bates nie verleen word.

20. 19.1. onherroeplik om die bates op so 'n wyse te identifiseer dat hy te enige tyd die bates wat geag word die eiendom van en verpand aan die Maatskappy te wees, kan identifiseer en aandui

19.2. aan die Maatskappy te alle redelike tye toegang te verleen tot die perseel waar die bates geberg word, vir die doeleindes van vervaormaking van sy pand en uitoefening van enige ander regte ingevolge hierdie bepallings en voorwaardes

21. Die Koper en die Verkoper stem hiermee in tot die jurisdiksie van die Landdroshof ingevolge Artikel 45 van die Landdroshof wet (Wet 32 van 1944, soos gewysig) vir enige regskasse wat deur die Maatskappy teen die Koper of Verkoper ingestel mag word, alhoewel die Maatskappy daarop geregtig is om litigasie in enige Hof met regsbevoegdheid in te stel.

22. Die inskrywings wat gemaak is in die Maatskappy se vendurol sal dien as prima facie bewys van die transaksie en sal bindend wees op sowel die Koper as die Verkoper.

23. 'n Sertifikaat uitgereik deur 'n Bestuurder van die Maatskappy, sal dien as prima facie bewys van geldde verskuldig deur die Koper aan die Verkoper of deur enige van voormelde partye aan die Maatskappy.

24. Enige persoon wat namens 'n prinsipaal koop, moet voor die aanvang van die velling 'n volmag aan die Maatskappy voorle, by gebreke waaraan hy persoonlik aanspreeklik gehou sal word vir die betaling van enige aankope wat hy gemaak het. Die persoon wat namens die Koper die of enige dokument onderteken in opvolging van 'n suksesvolle bod, verbind homself persoonlik as medehoofskuldenaar met die Koper vir die betaling van die koopprys en waarborg persoonlik dat al die verpligtinge van die Koper ingevolge hierdie bepallings en voorwaardes nagekom sal word.

25. Enige toegewing wat deur die Maatskappy aan die Koper of die Verkoper toegestaan word, sal nie die regte van die Maatskappy ingevolge hierdie bepallings en voorwaardes betraaf nie en sodanige uitstel of toegewing sal nie 'n wysiging of nuwaste van hierdie bepallings en voorwaardes ulmaak nie.

26. Alle persone wat die verkoopspreek betree, doen dit op eie risiko en die Maatskappy is nie aanspreeklik vir enige beserings, skade of verliese van enige aard hoegenaamd nie.

27. Die Maatskappy behou die reg voor om hierdie verkoopsvoorwaardes skriftelik te wysig.

28. Enige bates wat te koop aangebied of ingeskryf word, is onderhewig aan betaling deur die Verkoper van die ooreengekomme kommissie of, in die afwesigheid van ooreenkoms, die gewone kommissie deur die Verkoper aan die Maatskappy teen die koers wat geruimlik van tyd tot tyd deur die Maatskappy gehet word, ongeag of die bates by die velling of daarna uit die hand verkoop word. Tensy andersins skriftelik ooreengekom, word sodanige kommissie deur die Verkoper betaalbaar by die val van die hamer of by die aangaan van enige uit-die-hand-verkoopstransaksie met betrekking tot die Verkoper se gemekte bates, watter datum ook al die eerste voorkom en miteenstaande enige kontrakbreuk aan die kant van die Verkoper.

29. Ingeval van geregistreerde voertuie wat deur die Maatskappy verkoop word, is dit 'n spesifieke voorwaarde dat die Maatskappy nie die inligting met betrekking tot sodanige voertuie waarborg nie en nie ondertem om die oordrag dokumente en registrasie-sertifikaate aan die Koper te voorsien nie. Dit is die Koper se verantwoordelijkheid om bogenoemde dokumente te bekom en hy is nie daarop geregtig om betaling te weentou weens versium aan die kant van die Maatskappy of die Verkoper om sodanige dokumente te voorsien nie.

30. Enige ooreenkoms teenstrydig met hierdie verkoopsvoorwaardes het geen bindings krag hoegenaamd tensy dit op skrif gestel en bevestigig en onderteken word deur 'n Bestuurder van die Maatskappy nie.

31. By wanbetaling van die koopprys deur die Koper, sal Vlissenstraat Bloemfontein geregtig wees om volgens eie diskresie:

31.1. rente teen die maksimum toelaatbare koers bereken vanaf datum van aankope tot datum van betaling, van Koper te eis, en/of

31.2. die bate in herbesit te neem, te herverkoop op risiko van die wanpresterende Koper, wat alle koste in verband met die herverkoop en enige verlies en/of skade wat gely mag word, sal dra, en nie geregtig wees op enige voordeel wat uit die herverkoop mag voortvloei nie; en/of

31.3. voorwaardes in sy eie naam in te stel vir die betaling van die bedrag verskuldig of vir die teruglewering van die bates in welke geval die voorwaardes in 13.2 hierbo van toepassing sal wees; en

31.4. betaling van Vlissenstraat Bloemfontein se regskoste, bereken op die Prokureur/Klient skaal inkludierende invorderingsgade van die Koper te eis.

32. Wilt Katalogusverkope: Vanaf die omtank van lewering sal alle risiko, wins of verlies ten opsigte van die bates op die Koper oorgaan, wat dit op sy eie koste van die ooreengekomme leweringsterrein moet verwyder.

33. Wilt Vellingsverkope (Bomas): Alle Bates sal onmiddellik nadat die bod toegestaan is, as afgelewer aan die Koper beskou word, alle risiko, wins of verlies ten opsigte van die bates sal op die Koper oorgaan, wat dit op sy eie koste van die vellingsterrein moet verwyder. Kopers van wild wat in Bomas aangebied word moet sodanige wild binne 48 uur na die velling in ontvangs neem en verwyder. 'n Koper wat versium om die lewering binne die vasgestelde tyd te neem, sal die aankopsbedrag reeds betaal, verbeur en sal dit as roukoop deur die Verkoper opgeërs word.

TERMS AND CONDITIONS OF SALE IN RESPECT OF SALES BY

VLEISSENTRAAAL BLOEMFONTEIN (Pty) Ltd – Registration no 1999/023878/07 (Hereinafter referred to as the "Company")

1. All goods and livestock (hereinafter referred to as the "assets") are sold by the Company as agent on behalf of the Seller, who hereby authorises the Company to collect the purchase price from the Buyer.
2. The Seller warrants that there are no encumbrances on such assets, that the said assets are the property of the Seller, and that the Seller is competent and legally entitled to dispose of the assets. The Seller further warrants as against the Buyer that the assets are free of patent and latent defects.
3. The Company accepts no liability for any withdrawal of assets from sale, or for any express or implied statements or guarantees which may be contained in catalogues or advertisements be given verbally by its agents or employees, or by the Seller.
4. The Seller, who offers the assets for sale, accepts all liability regarding the information furnished as to pedigrees, ages, dates of service, state of health or gestation or any other particulars which might be incorrect. In the event of any dispute the Buyer shall only have a claim against the Seller and not against the Company.
5. The purchase price is payable by the Buyer to the Company in cash (under certain conditions) or by bank-guaranteed cheque on the date of sale (the payment date) unless other payment terms are agreed in writing between the Company and the Buyer.
6. In the event that the Company agrees to facilitate the purchase of the assets by paying an amount equal to the purchase price to the Seller, before the Buyer makes payment to the Company (the Payment Terms Agreement) then the following shall apply:
 - 6.1. The decision to make any payment to the Seller shall be in the sole and absolute discretion of the Company, which discretion may be exercised separately in regard to each transaction entered into by the Buyer.
 - 6.2. Upon payment of the amount referred to in 6.1 above the Seller's right, title and interest in and to any claims and other rights as against the Buyer in terms of or connected with the sale of the assets shall forthwith be ceded and transferred to the Company.
 - 6.3. No Payment Terms Agreement shall be valid unless reduced to writing and duly signed on behalf of the Company. The facilitation of any sale by the Company as referred to in this paragraph shall be strictly subject to the terms and conditions of the Payment Terms Agreement.
 - 6.4. In the event of any conflict between the contents of this document and the Payment Terms Agreement, the provisions of the Payment Terms Agreement shall prevail.
 - 6.5. No application for credit as defined in section 6 of the National Credit Act, Act 34 of 2005, will be received or considered by the Company.
7. The Seller warrants as against the Company that the assets are free of patent and latent defects and that any right or claim ceded to the Company in terms of these terms and conditions is free of any defect or right of deduction or set-off, and that the said right or claim is fully and immediately enforceable against the Buyer.
8. The Buyer shall not be entitled to withhold payment of the purchase price to the Company as a result of any possible or pending claim that he may have against the Seller on the grounds of misrepresentation or for any other reason whatsoever.
9. In the event where Buyers must register at an Auction, and such a registered Buyer allows another person to purchase on his buyers card, the registered Buyer shall be liable for payment of such purchases. No bid by an unregistered Buyer will be accepted by the Company and the Buyer will have no claim to any of the assets allegedly purchased by him.
10. Subject to any reserve placed on any of the assets by the Seller, and the provisions of clause 14 and 15 below, the Buyer at any sale shall be the highest bidder indicated by the Company's auctioneer by the fall of the hammer or by such other means as he may select.
11. All assets shall immediately after the bid being knocked down, be deemed to have been delivered to the Buyer. Notwithstanding delivery, the Buyer shall not be entitled to remove any purchased assets unless the total amount reflected on the Company's tax invoice in respect of such assets has been paid in full.
12. All profit, loss or risk in the assets will pass to the Buyer once it has been delivered to the Buyer who shall at this own risk and expense remove it from the sale venue, subject to 11 above.
13. Should a carriage contractor remove any assets from the sale venue on instruction of the Company, the contractor will be deemed an agent of the Buyer who accepts all costs and risks connected with such removal.
14. The auction shall take place under the exclusive control of the Company. The Company reserves the right, in its sole discretion, to refuse the bid of any person, to regulate the bidding, to indicate the highest bidder and to vary the order of the sale at any time without giving reasons therefor. If the auctioneer suspects that a bidder has not made a bona fide bid, or is unable to pay the purchase price or has not made satisfactory arrangements for payment of the purchase price, he may refuse to accept the bid of such bidder or accept it provisionally until the bidder has satisfied him that he is in position to pay the purchase price or that he has made satisfactory arrangements for payment thereof. On refusal of a bid under such circumstances the assets may immediately be re-auctioned.
15. In the event of a dispute arising amongst the bidders, the assets in dispute shall, at the sole discretion of the Company, be re-auctioned.
16. The Company shall not be liable for loss or damages caused to, or sustained in respect of any action by, the Company or its helpers, employees or agents, notwithstanding an undertaking to care for or attend to, to despatch or deliver the assets. All assets are sold to the Buyer "voelstoek" and the Company shall not be liable for any defects, latent or otherwise which might exist with or without the knowledge of the Company.

17. The Buyer shall, prior to the sale, ascertain whether there are any defects in the assets and any bid by a Buyer shall be considered as acceptance of the assets with any patent or latent defects in their condition at the time of sale.

18. The Company reserves the right to refuse any cheque as payment.

19. Notwithstanding delivery, ownership of the purchased assets will not pass to the Buyer until the full purchase price plus interest, if payable, is paid.

20. Until all amounts owing by the Buyer have been paid in full, the Buyer hereby:

20.1. irrevocably undertakes to identify the purchased assets in such a manner that he can at any time identify and indicate the assets deemed to be the property of, and pledged to, the Company.

20.2. grants the Company access at all reasonable times to the premises where the assets are stored for the purposes of perfecting its pledge and exercising any other rights in terms of these terms and conditions.

21. The Buyer and the Seller hereby consent to the jurisdiction of the Magistrate's Court in terms of Section 45 of the Act on Magistrate Court (Act 32 of 1944 as amended) for any action instituted by the Company against the Buyer although the Company is entitled to institute litigation in any competent Court.

22. The entries made in the Company's auction catalogue shall be prima facie evidence of the transaction and shall be binding on the Seller and the Buyer.

23. A certificate issued by a Manager of the Company, whose appointment and authority shall not be necessary to prove, shall be prima facie proof of monies owing by the Buyer to the Seller or the Company.

24. Any person who purchases on behalf of a principal must furnish the Company with a power of attorney prior to the commencement of the sale falling which he will personally be liable for payment of any purchases made by him. The person bidding on behalf of or signing any document on behalf of the Buyer pursuant to a successful bid thereby binds himself personally as co-principal debtor with the Buyer for payment of the purchase price and personally guarantees all the obligations of the Buyer under these terms and conditions.

25. Any indulgence granted by the Company to the Buyer or the Seller will not prejudice the rights of the Company in terms of these conditions and such indulgence will not constitute an amendment or waiver or novation of these terms and conditions.

26. All persons entering the sale venue do so at their own risk and the Company shall not be liable for any injuries, damages or losses of any nature whatsoever.

27. The Company reserves the right to amend these conditions of sale in writing.

28. Any assets entered or offered for sale are subject to payment by the Seller of the agreed commission, or in absence of agreement the usual commission by the Seller to the Company at the rate customarily charged by the Company from time to time, whether the assets are sold at the auction or thereafter, or at any time thereafter by private treaty. Unless otherwise agreed in writing, commission shall become due and payable by the Seller upon the fall of the hammer or upon the entering into of any private treaty involving the Seller's said assets, whichever date is the earlier, and notwithstanding any breach on the part of the Seller.

29. In the event of registered vehicles being sold by the Company, it is a specific condition that the Company does not guarantee the information regarding the vehicles and does not undertake to furnish the transfer documents and registration certificates to the Buyer. The Buyer shall be responsible to obtain the aforementioned documents and shall not be entitled to withhold payment due to a failure on the part of either the Company or the Seller to furnish the documents.

30. Any agreement contrary to these conditions of sale shall not be binding unless it is confirmed in writing and signed by a Manager of the Company.

31. Should the Purchaser fail to pay the purchase price, Vleissentraal Bloemfontein shall be entitled in its discretion to:

31.1 claim from the Purchaser interest at the maximum interest rate from date of purchase until date of settlement; and/or

31.2 repossess the assets, to resell it at the risk of the defaulting Purchaser who shall be liable for all costs involved with the resale and also be liable of any damages sustained. The Purchaser will not be entitled to any profit that may arise from the resale; or

31.3 institute legal proceedings for the payment of the amount owing or for the return of the assets in which event the conditions of Clause 13.2 will apply; and

31.4 recover any legal costs calculated at the Attorney/Client tariff as well as collection costs.

32. Game Catalogue Sales: All profit, loss and risk in the assets will pass to the Purchaser once it has been delivered to the Purchaser who shall at own expense remove it from the venue agreed between the Seller and Purchaser.

33. Game Auction Sales (Bomas): All assets shall immediately after bid being knocked down, be considered as delivered to the Purchaser and all profit, loss or risk in the assets will pass to the Purchaser who shall at own expense remove it from the sale venue. Buyers of game kept in bomas must take possession and remove such game within 48 hours after sale. Should a buyer fail to remove and take delivery within the fixed time after the sale, he/she will forfeit all monies already paid to the Seller.

